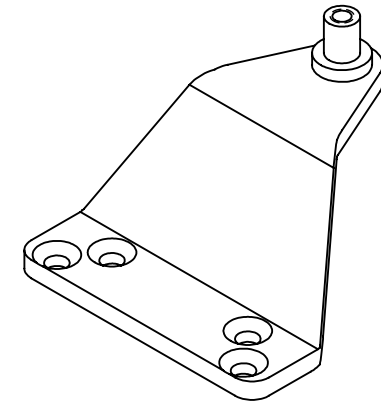
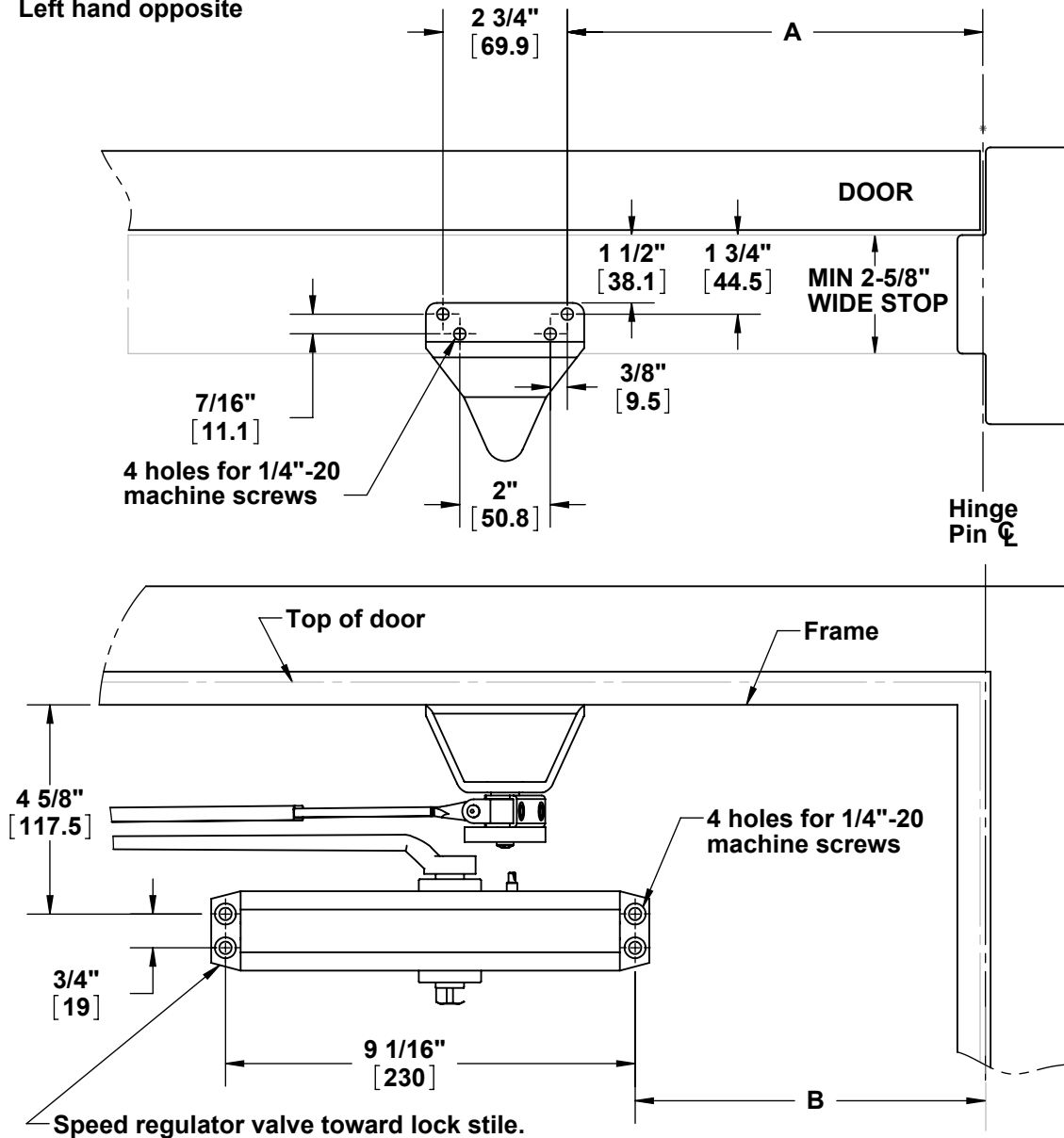


Right hand shown
Left hand opposite

REV.	DESCRIPTION	ECO NO.	DATE
01	ORIGINAL RELEASE		2/11/2010
02	ADDED NOTE		11/10/2011



NOTE:
MINIMUM TOP RAIL CLEARANCE OF 7-3/4"
Screw pack contains:
4 pcs 1/4" x 1-1/2" self-taping self-drilling flat head wood screw
4 pcs 1/4"-20 x 1-1/2" self-taping self-drilling flat head metals screw

Opening	Dimension 'A'	Dimension 'B'
UP to 100°	9-1/4" (235mm)	7-5/8" (194mm)
101° to 130°	7-3/4" (197mm)	6-1/8" (156mm)
131° to 180°	5-3/4" (146mm)*	4-1/8" (105mm)

* Door/Wall/Hardware/Jamb condintions permitting.

Reference 5300 closer instructions
for further closer installation detail.



PROPRIETARY & CONFIDENTIAL
THE INFORMATION CONTAINED
IN THIS DRAWING IS THE SOLE
PROPERTY OF HAGER
COMPANIES. ANY REPRODUCTION
IN PART OR AS A WHOLE WITHOUT
THE WRITTEN PERMISSION OF
HAGER COMPANIES IS PROHIBITED.

HAGER RESERVES
THE RIGHT TO
MAKE DESIGN
CHANGES
WITHOUT NOTICE.
CALL HAGER
ENGINEERING AT
1-800-325-9995
FOR THE LATEST
REVISION DATE
OF TEMPLATE.

MATERIAL	Material <not specified>
FINISH	-
DO NOT SCALE DRAWING	

DRAWN	NJ	2/9/2010
ENG. APPR.	-	-
Q.A.		
TOLERANCES: FRACTIONAL: ±0.015" ANGULAR: MACH: ±1° BEND: ±1° TWO PLACE DECIMAL: ±0.01" THREE PLACE DECIMAL: ±0.004"		

5936 (5300 install) EXTRA CLEARANCE BRACKET		REV.	02
SIZE	DWG. NO.	I-CL00277	
SCALE: 1:24	WEIGHT: 229.93	SHEET 1 OF 1	