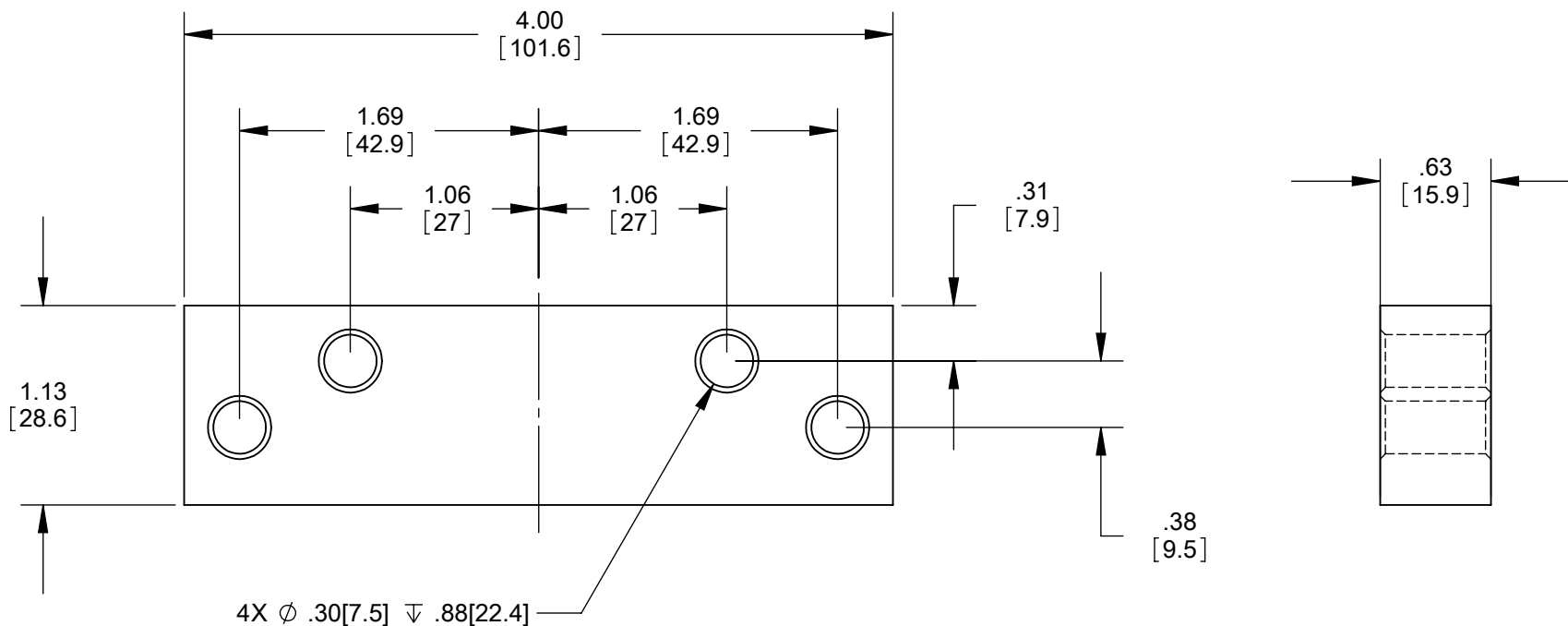


REVISIONS			
REV.	DESCRIPTION	DATE	APPROVED
1	ECO CL07002	4/9/2007	



NOTES:
- Break all edges

SCREW PACK INCLUDES:
4 PCS. 1/4-20 x 2" FPHS SELF DRILLING (STEEL)
4 PCS. 1/4-14 x 2" FPHS SELF DRILLING (STEEL)



HAGER RESERVES THE RIGHT TO MAKE DESIGN CHANGES WITHOUT NOTICE. CALL HAGER ENGINEERING AT 1-800-325-9995 FOR THE LATEST REVISION DATE OF TEMPLATE.

PRIMARY DIMENSIONS SHOWN IN INCHES, DIMENSIONS IN [] ARE MILLIMETERS.

MATERIAL	Plain Carbon Steel
FINISH	-
DO NOT SCALE DRAWING	

DRAWN	T Sveitis	12/20/05
ENG. APPR.	-	-
Q.A.	-	-
TOLERANCES: FRACTIONAL: ±0.015" ANGULAR: MACH: ±1° BEND: ±1° TWO PLACE DECIMAL: ±0.01" THREE PLACE DECIMAL: ±0.004"		

5113 Blade Stop Spacer
Used on 5100 Closer

SIZE	DWG. NO.	REV.
A	S-CL00072	-01
SCALE: 1:1	WEIGHT: 0.74	SHEET 1 OF 1