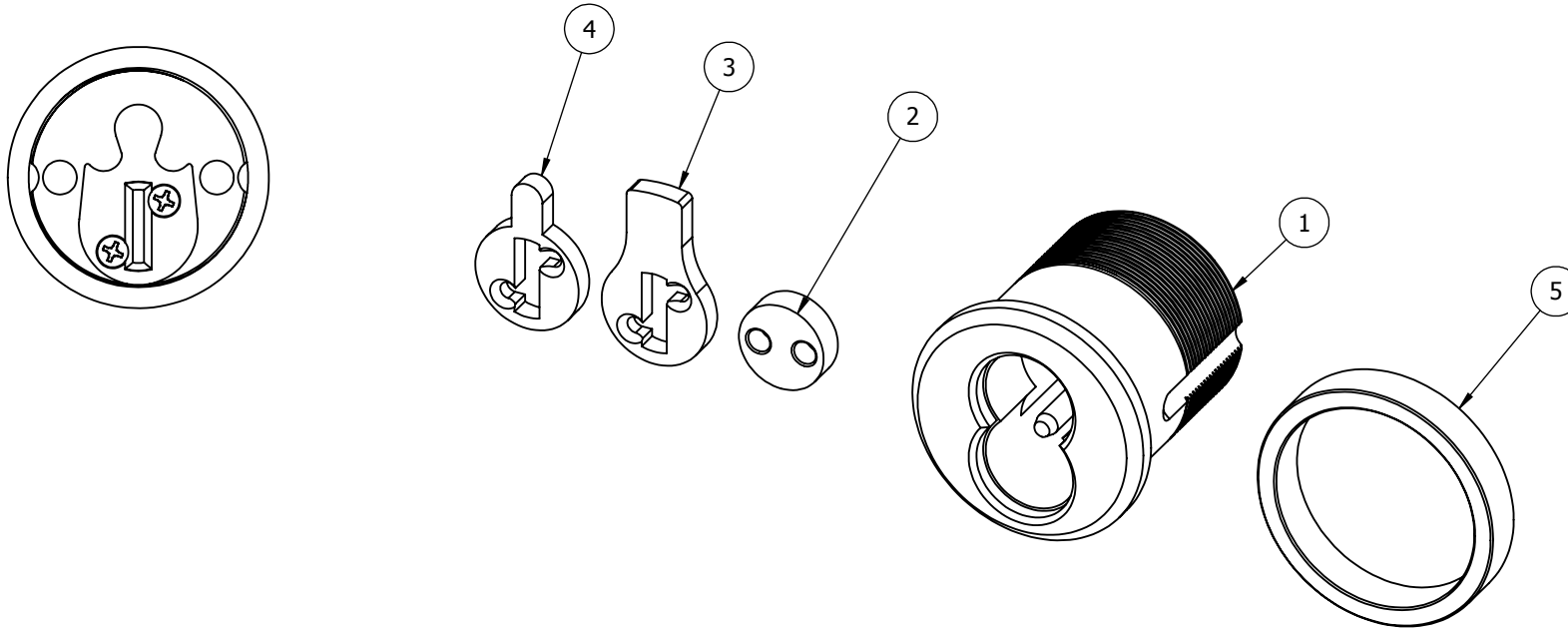



NOTES:

1. MORTISE CYLINDER ASSY AND BLOCKING RING PACKED TOGETHER IN OPEN POLY BAG
2. OPEN POLY BAG AND OTHER COMPONENTS PACKED IN WHITE CARDBOARD BOX WITH UPC LABEL
3. SFIC CORE SOLD SEPERATELY
4. SCHLAGE L CAM ATTACHED TO MORTISE CYLINDER

REV.	DESCRIPTION	ECO NO.	DATE
-	CREATED IN RESPONSE TO CUSTOMER REQUEST		12/16/2015



ITEM NO.	FILE NAME	DESCRIPTION	QTY.
1	S-LS02048	MORTISE CYLINDER ASSY, SFIC	1
2	S-CK00052	SPACER, FORK	1
3	S-LS00005	STANDARD YALE CAM, SFIC	1
4	S-LS00006	ADAMS RITE CAM, SFIC	1
5	S-LS01801	BLOCKING RING - 1/4" CLR	1

 <p><b>PROPRIETARY &amp; CONFIDENTIAL</b> THE INFORMATION CONTAINED IN THIS DRAWING IS THE SOLE PROPERTY OF HAGER COMPANIES. ANY REPRODUCTION IN PART OR AS A WHOLE WITHOUT THE WRITTEN PERMISSION OF HAGER COMPANIES IS PROHIBITED.</p>	<p>HAGER RESERVES THE RIGHT TO MAKE DESIGN CHANGES WITHOUT NOTICE. CALL HAGER ENGINEERING AT 1-800-325-9995 FOR THE LATEST REVISION DATE OF TEMPLATE.</p>	<p>DRAWN: KJW 12/15/2015</p>	<p>3902 MORTISE CYLINDER BOM, SFIC</p>				
		<p>ENG. APPR.: MAM 12/16/2015</p>					
		<p>MATERIAL: Material &lt;not specified&gt;</p>	<p>Q.A.</p>	<p>TOLERANCES: FRACTIONAL: ±0.015" ANGULAR: MACH: ± 1° BEND: ±1° TWO PLACE DECIMAL: ±0.01" THREE PLACE DECIMAL: ±0.004"</p>	<p>SIZE: <b>A</b></p>	<p>DWG. NO.: S-LS02049</p>	<p>REV.: -</p>
		<p>FINISH: -</p>	<p>DO NOT SCALE DRAWING</p>		<p>SCALE: 1:1</p>	<p>WEIGHT: 0.31</p>	<p>SHEET 1 OF 1</p>