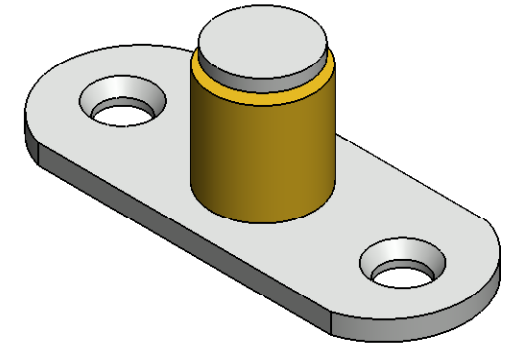


REVISIONS		
REV.	DESCRIPTION	DATE
-		1/9/2008
01	NEW DRAWING	3/17/2008



NOTES:
 -FOR USE ON BY-PASS AND POCKET APPLICATIONS
 -DOOR MORTISING IS NOT REQUIRED
 -USE WITH 9122 GUIDE CHANNEL

HARDWARE INCLUDED:
 -2 PCS #8-32 x 1" CROSS FLAT HEAD SCREW



PROPRIETARY & CONFIDENTIAL
 THE INFORMATION CONTAINED
 IN THIS DRAWING IS THE SOLE
 PROPERTY OF HAGER
 COMPANIES. ANY REPRODUCTION
 IN PART OR AS A WHOLE WITHOUT
 THE WRITTEN PERMISSION OF
 HAGER COMPANIES IS PROHIBITED.

HAGER RESERVES
 THE RIGHT TO
 MAKE DESIGN
 CHANGES
 WITHOUT NOTICE.
 CALL HAGER
 ENGINEERING AT
 1-800-325-9995
 FOR THE LATEST
 REVISION DATE
 OF TEMPLATE.

MATERIAL STEEL W/ BRONZE ROLLER	DRAWN	NJANSEN	12/12/2007	9111 BOTTOM ROLLER GUIDE	
	ENG. APPR.	M MCRAE	3/17/2008		
	Q.A.				
FINISH ZINC PLATED	TOLERANCES: FRACTIONAL: $\pm 0.015"$ ANGULAR: MACH: $\pm 1^\circ$ BEND: $\pm 1^\circ$ TWO PLACE DECIMAL: $\pm 0.01"$ THREE PLACE DECIMAL: $\pm 0.004"$			SIZE A	DWG. NO. S-SD00004
DO NOT SCALE DRAWING	SCALE: 2:1	WEIGHT: 0.07		REV. 01	SHEET 1 OF 1