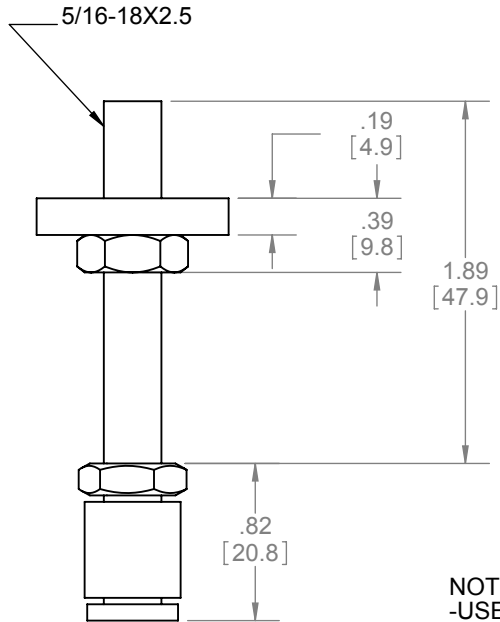
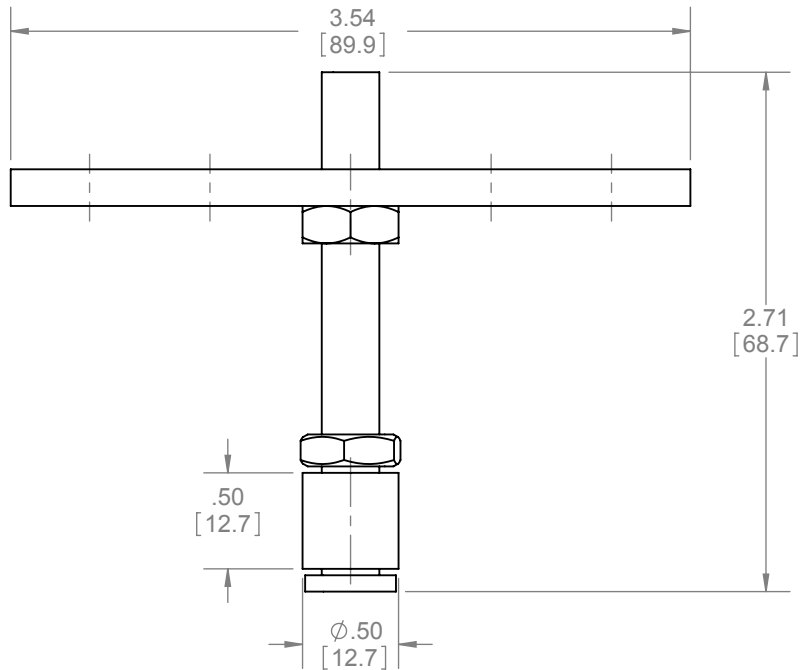
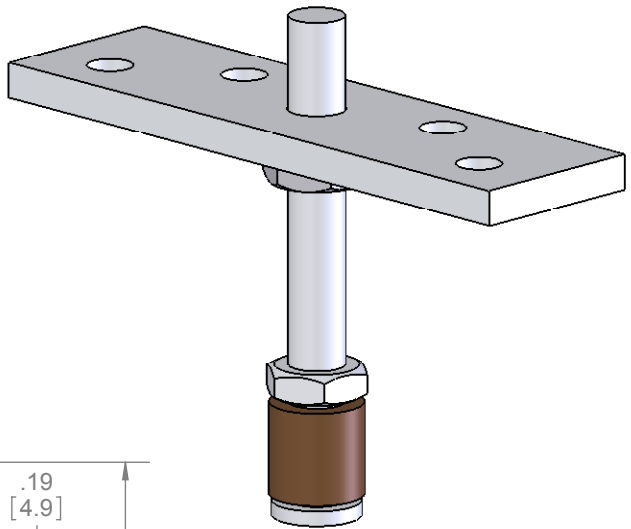
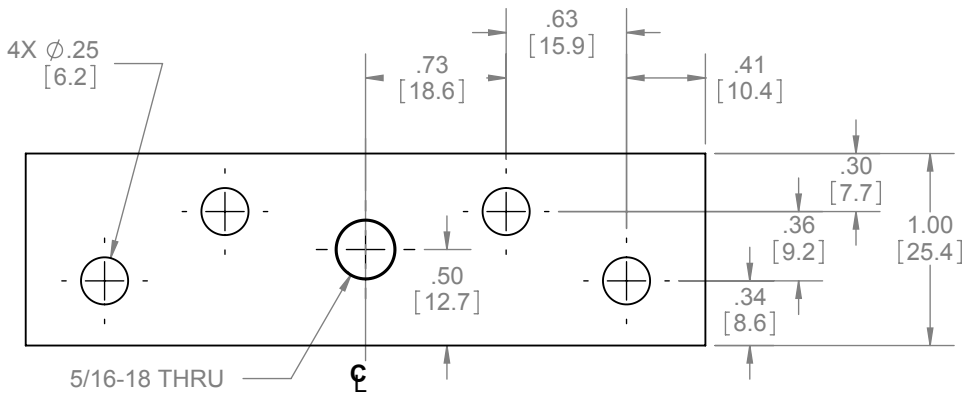


REVISIONS		
REV.	DESCRIPTION	DATE
02	NEW DRAWING FOR WEB	3/17/2008



NOTES:
-USE WITH 9122 GUIDE CHANNEL

HARDWARE INCLUDED:
- 4 PCS #12-24 x 1-1/4" CROSS PAN HEAD SCREW
- 1 PC 5/16"-18 HEX NUT
- 1 PC 5/16" LOCK WASHER



PROPRIETARY & CONFIDENTIAL
THE INFORMATION CONTAINED
IN THIS DRAWING IS THE SOLE
PROPERTY OF HAGER
COMPANIES. ANY REPRODUCTION
IN PART OR AS A WHOLE WITHOUT
THE WRITTEN PERMISSION OF
HAGER COMPANIES IS PROHIBITED.

HAGER RESERVES
THE RIGHT TO
MAKE DESIGN
CHANGES
WITHOUT NOTICE.
CALL HAGER
ENGINEERING AT
1-800-325-9995
FOR THE LATEST
REVISION DATE
OF TEMPLATE.

		DRAWN	NJANSEN	12/12/2007	9121		
		ENG. APPR.	M MCRAE	3/17/2008	ADJUSTABLE BOTTOM DOOR GUIDE		
MATERIAL STEEL W/ BRONZE ROLLER		Q.A.					
FINISH ZINC PLATED		TOLERANCES: FRACTIONAL: ±0.015" ANGULAR: MACH: ±1° BEND: ±1° TWO PLACE DECIMAL: ±0.01" THREE PLACE DECIMAL: ±0.004"			SIZE A	DWG. NO. S-SD00006	REV. 02
DO NOT SCALE DRAWING					SCALE: 1:1	WEIGHT: 0.26	SHEET 1 OF 1