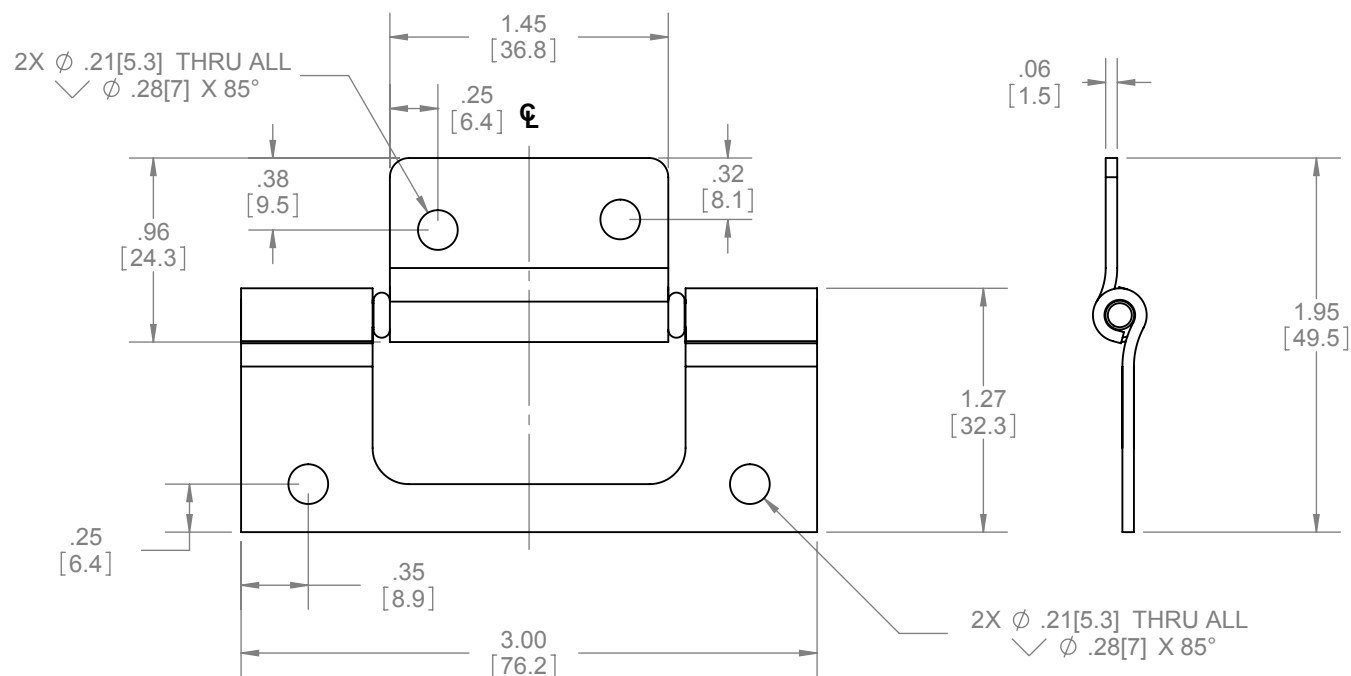
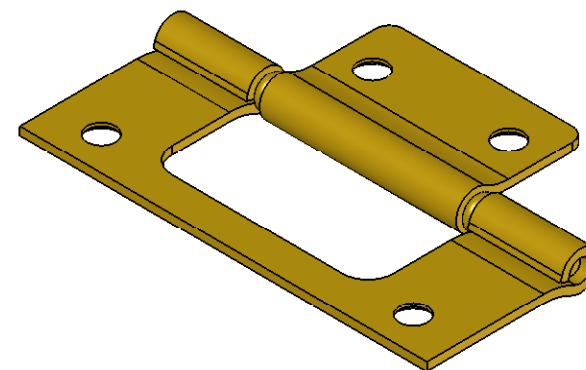
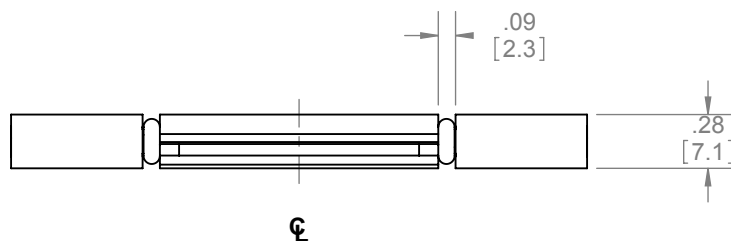


REVISIONS		
REV.	DESCRIPTION	DATE
02	NEW DRAWING FOR WEB	3/17/2008



NOTES:  
 - FOR USE ON 7/8"(22mm) THICK DOORS MINIMUM  
 - NON-MORTISE AND EASY TO INSTALL

HARDWARE INCLUDED:  
 - 7PCS #6-32 x 7/8" CROSS FLAT HEAD SCREW



**PROPRIETARY & CONFIDENTIAL**  
 THE INFORMATION CONTAINED  
 IN THIS DRAWING IS THE SOLE  
 PROPERTY OF HAGER  
 COMPANIES. ANY REPRODUCTION  
 IN PART OR AS A WHOLE WITHOUT  
 THE WRITTEN PERMISSION OF  
 HAGER COMPANIES IS PROHIBITED.

HAGER RESERVES  
 THE RIGHT TO  
 MAKE DESIGN  
 CHANGES  
 WITHOUT NOTICE.  
 CALL HAGER  
 ENGINEERING AT  
 1-800-325-9995  
 FOR THE LATEST  
 REVISION DATE  
 OF TEMPLATE.

MATERIAL	STEEL
FINISH	BRASS-TONE DICHROMATE
DO NOT SCALE DRAWING	

DRAWN	NJANSEN	1/9/2008
ENG. APPR.	M MCRAE	3/17/2008
Q.A.		
TOLERANCES: FRACTIONAL: $\pm 0.015"$ ANGULAR: MACH: $\pm 1^\circ$ BEND: $\pm 1^\circ$ TWO PLACE DECIMAL: $\pm 0.01"$ THREE PLACE DECIMAL: $\pm 0.004"$		

9220 BI-FOLD DOOR HINGE		SIZE	DWG. NO.	REV.
		A	S-SD00008	02
SCALE: 1:1	WEIGHT: 0.09	SHEET 1 OF 1		