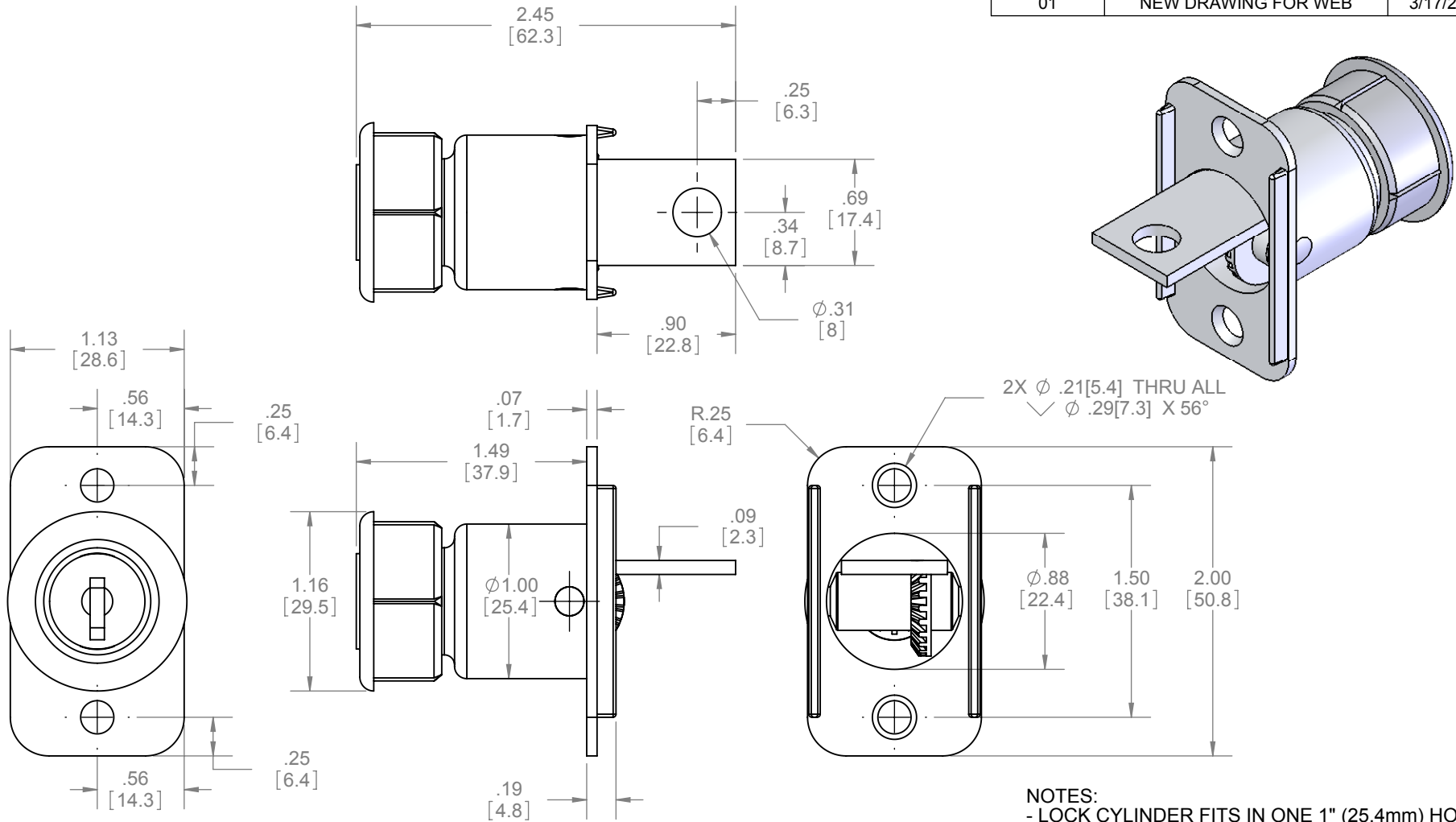


| REVISIONS | | |
|-----------|---------------------|-----------|
| REV. | DESCRIPTION | DATE |
| 01 | NEW DRAWING FOR WEB | 3/17/2008 |



NOTES:
 - LOCK CYLINDER FITS IN ONE 1" (25.4mm) HOLE
 - AVAILABLE KEYED ALIKE
 - FOR DOORS 1-3/8" (35mm) TO 1-3/4" (44mm) THICK

HARDWARE INCLUDED:
 - 2 PCS #6-32 x 7/8" CROSS FLAT HEAD SCREW
 - 1 PC #10-24 x 3/4" SLOTTED FLAT HEAD SCREW
 - 1 PC JAMB STRIKE
 - 2 PCS KEY



PROPRIETARY & CONFIDENTIAL
 THE INFORMATION CONTAINED IN THIS DRAWING IS THE SOLE PROPERTY OF HAGER COMPANIES. ANY REPRODUCTION IN PART OR AS A WHOLE WITHOUT THE WRITTEN PERMISSION OF HAGER COMPANIES IS PROHIBITED.

HAGER RESERVES THE RIGHT TO MAKE DESIGN CHANGES WITHOUT NOTICE. CALL HAGER ENGINEERING AT 1-800-325-9995 FOR THE LATEST REVISION DATE OF TEMPLATE.

| | | |
|---------------------------------------------------------------------------------------------------------------------------------|--------------|-----------|
| DRAWN | NJANSEN | 1/9/2008 |
| ENG. APPR. | M MCRAE | 3/17/2008 |
| Q.A. | | |
| TOLERANCES: FRACTIONAL: ±0.015" ANGULAR: MACH: ±1° BEND: ±1° TWO PLACE DECIMAL: ±0.01" THREE PLACE DECIMAL: ±0.004" | | |
| MATERIAL | STEEL | |
| FINISH | ZINC PLATING | |
| DO NOT SCALE DRAWING | | |

| | | |
|------------------------|--------------|--------------|
| 9262 | | REV. |
| POCKET DOOR KEYED LOCK | | 01 |
| SIZE | DWG. NO. | |
| A | S-SD00009 | |
| SCALE: 1:1 | WEIGHT: 0.26 | SHEET 1 OF 1 |