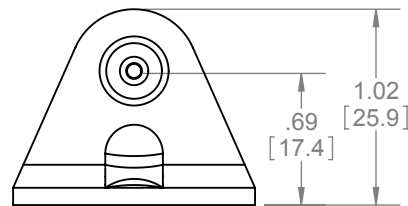
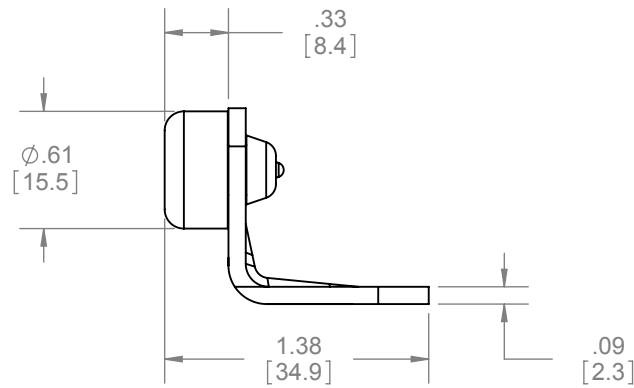
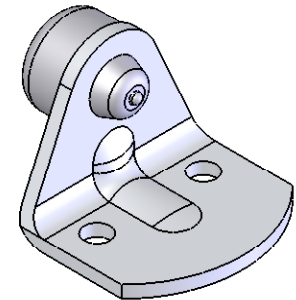
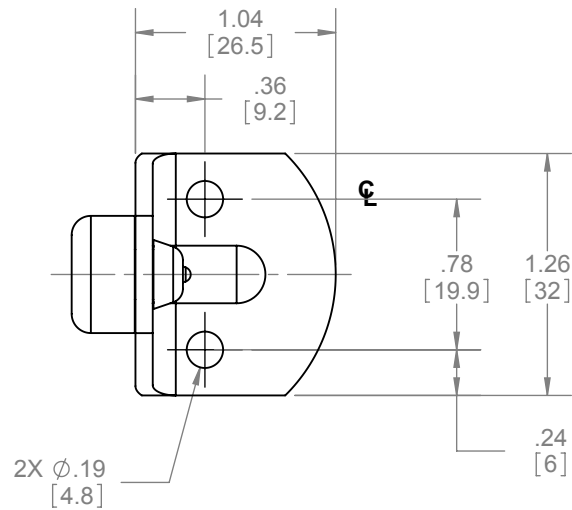


REVISIONS		
REV.	DESCRIPTION	DATE
01	NEW DRAWING FOR WEB	3/19/2008



- NOTES:**
- KEEPS REAR DOOR PULL EXPOSED
 - MOUNTS ON DOOR
 - NOT INCLUDED IN SETS
- HARDWARE INCLUDED:**
- 2PCS #8-32 x 3/4" CROSS PAN HEAD SCREW



PROPRIETARY & CONFIDENTIAL

THE INFORMATION CONTAINED IN THIS DRAWING IS THE SOLE PROPERTY OF HAGER COMPANIES. ANY REPRODUCTION IN PART OR AS A WHOLE WITHOUT THE WRITTEN PERMISSION OF HAGER COMPANIES IS PROHIBITED.

HAGER RESERVES THE RIGHT TO MAKE DESIGN CHANGES WITHOUT NOTICE. CALL HAGER ENGINEERING AT 1-800-325-9995 FOR THE LATEST REVISION DATE OF TEMPLATE.

MATERIAL	STEEL W/ RUBBER BUMPER
FINISH	ZINC PLATED
DO NOT SCALE DRAWING	

DRAWN	NJANSEN	1/9/2008
ENG. APPR.	M MCRAE	3/19/2008
Q.A.		
TOLERANCES: FRACTIONAL: $\pm 0.015"$ ANGULAR: MACH: $\pm 1^\circ$ BEND: $\pm 1^\circ$ TWO PLACE DECIMAL: $\pm 0.01"$ THREE PLACE DECIMAL: $\pm 0.004"$		

9880 ANGLE STOP		REV. 01
SIZE A	DWG. NO. S-SD00020	
SCALE: 2:1	WEIGHT: 0.05	SHEET 1 OF 1