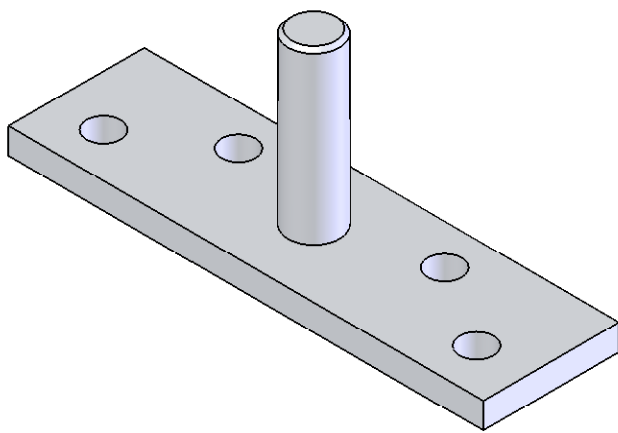
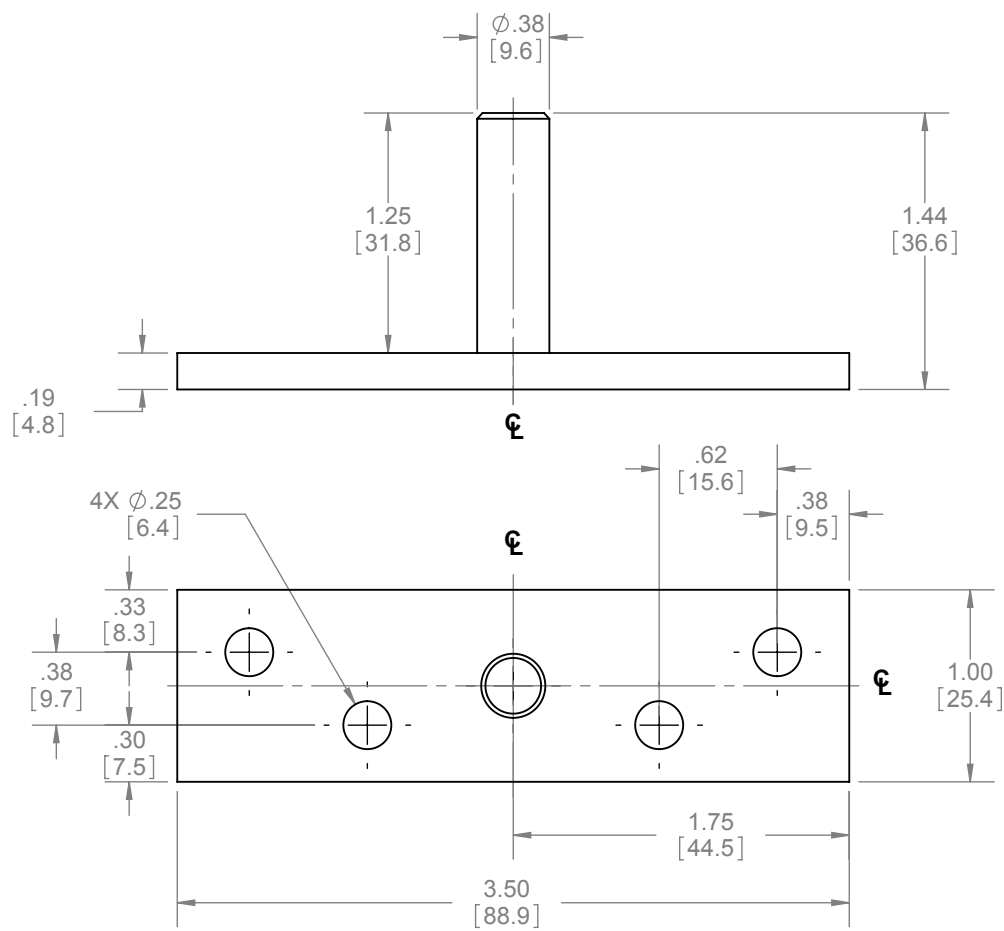



| REVISIONS | | |
|-----------|---------------------|-----------|
| REV. | DESCRIPTION | DATE |
| 01 | NEW DRAWING FOR WEB | 3/20/2008 |



NOTES:
 - INSERTS INTO 9155 TOP PIVOT CLAMP ASSEMBLY
 - 4 PCS #12-24 x 1-1/4" CROSS PAN HEAD SCREW

| | | | | | | | |
|---|---|--|--|------------------------------|--|--|--|
|  HAGER COMPANIES ST. LOUIS, MISSOURI | PROPRIETARY & CONFIDENTIAL THE INFORMATION CONTAINED IN THIS DRAWING IS THE SOLE PROPERTY OF HAGER COMPANIES. ANY REPRODUCTION IN PART OR AS A WHOLE WITHOUT THE WRITTEN PERMISSION OF HAGER COMPANIES IS PROHIBITED. | HAGER RESERVES THE RIGHT TO MAKE DESIGN CHANGES WITHOUT NOTICE. CALL HAGER ENGINEERING AT 1-800-325-9995 FOR THE LATEST REVISION DATE OF TEMPLATE. | | DRAWN NJANSEN 1/10/2008 | | 9169 TOP PIVOT ASSEMBLY | |
| | | MATERIAL STEEL | | ENG. APPR. M MCRAE 3/20/2008 | | | |
| | | FINISH ZINC PLATED | | Q.A. | | TOLERANCES: FRACTIONAL: ±0.015" ANGULAR: MACH: ± 1° BEND: ±1° TWO PLACE DECIMAL: ±0.01" THREE PLACE DECIMAL: ±0.004" | |
| | | DO NOT SCALE DRAWING | | | | | |
| | | | | | | | |
| | | SIZE A | | DWG. NO. S-SD00026 | | REV. 01 | |
| | | SCALE: 1:1 | | WEIGHT: 0.22 | | SHEET 1 OF 1 | |