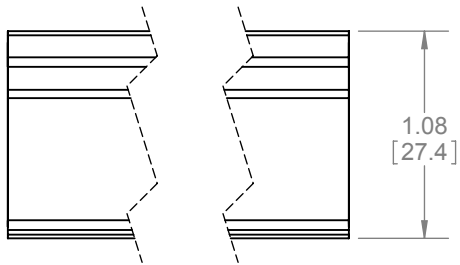
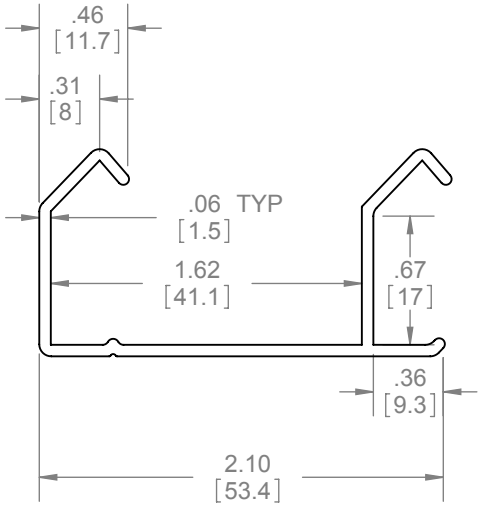
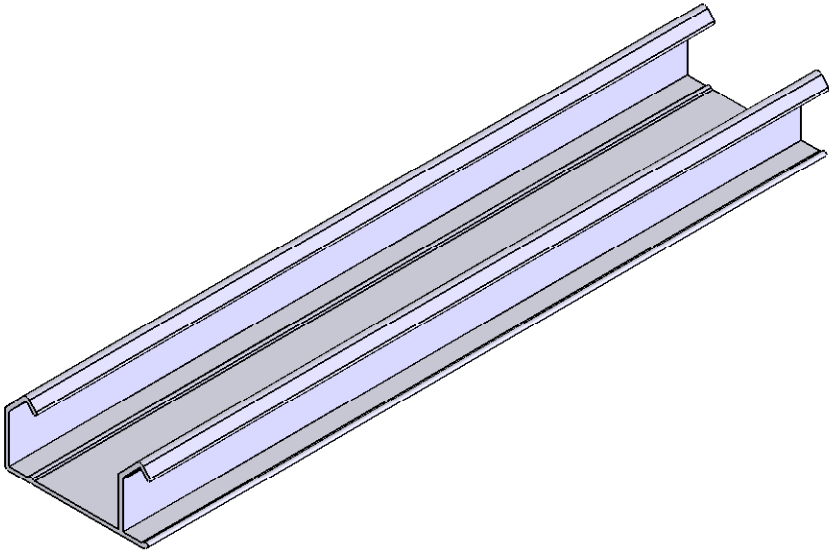


REVISIONS		
REV.	DESCRIPTION	DATE
01	NEW DRAWING FOR WEB	3/20/2008



- NOTES:**
- FOR DOORS UP TO 75LBS. (34kg)
  - ONE PIECE TRACK
  - FOR USE WITH 7/8"(22mm) DIAMETER HANGER WHEELS
  - FOR USE WITH "A" AND "B" HANGER SETS 9200/9201, 9202/9203, 9400/9401

- LENGTHS:**
- 48"(1219mm) TO 144"(3658mm)



**PROPRIETARY & CONFIDENTIAL**  
 THE INFORMATION CONTAINED IN THIS DRAWING IS THE SOLE PROPERTY OF HAGER COMPANIES. ANY REPRODUCTION IN PART OR AS A WHOLE WITHOUT THE WRITTEN PERMISSION OF HAGER COMPANIES IS PROHIBITED.

HAGER RESERVES THE RIGHT TO MAKE DESIGN CHANGES WITHOUT NOTICE. CALL HAGER ENGINEERING AT 1-800-325-9995 FOR THE LATEST REVISION DATE OF TEMPLATE.

MATERIAL EXTRUDED ALUMINUM	DRAWN	NJANSEN	1/10/2008
	ENG. APPR.	M MCRAE	3/20/2008
FINISH CLEAR	TOLERANCES:		
	FRACTIONAL: ±0.015" ANGULAR: MACH: ± 1° BEND: ±1° TWO PLACE DECIMAL: ±0.01" THREE PLACE DECIMAL: ±0.004"		
DO NOT SCALE DRAWING			

<b>9810</b>		<b>SLIDING DOOR TRACK</b>
SIZE	DWG. NO.	REV.
<b>A</b>	S-SD00038	<b>01</b>
SCALE: 1:4	WEIGHT: 0.28	SHEET 1 OF 1