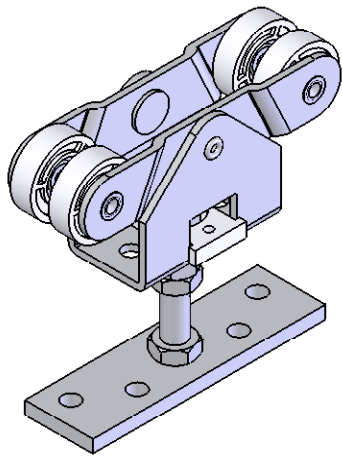
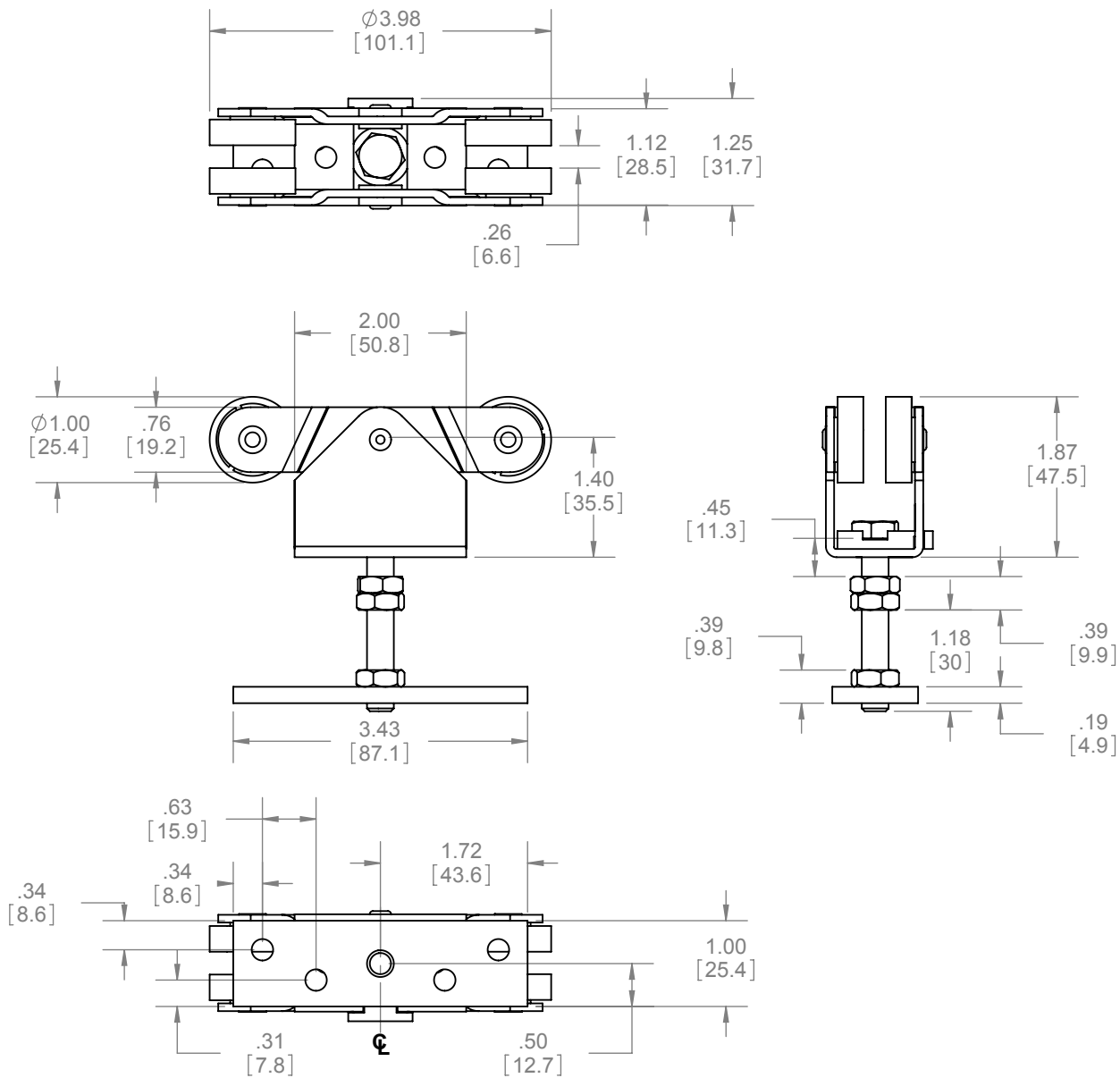


REVISIONS		
REV.	DESCRIPTION	DATE
01	NEW DRAWING FOR WEB	3/20/2008




**NOTES:**

- USE WITH 9101 TRACK, WITH DOORS WEIGHING UP TO 275LBS. (125kg)
- FOUR WHEEL HANGER IS SELF-ALIGNING TO ALLOW CONSISTENT CONTACT WITH TRACK

**HARDWARE INCLUDED:**

- 4PCS #12 x 1-1/4" CROSS PAN HEAD WOOD SCREW
- 1PCS 3/8" LOCK WASHER

 <b>HAGER</b> COMPANIES ST. LOUIS, MISSOURI	<b>PROPRIETARY &amp; CONFIDENTIAL</b>  THE INFORMATION CONTAINED IN THIS DRAWING IS THE SOLE PROPERTY OF HAGER COMPANIES. ANY REPRODUCTION IN PART OR AS A WHOLE WITHOUT THE WRITTEN PERMISSION OF HAGER COMPANIES IS PROHIBITED.	HAGER RESERVES THE RIGHT TO MAKE DESIGN CHANGES WITHOUT NOTICE. CALL HAGER ENGINEERING AT 1-800-325-9995 FOR THE LATEST REVISION DATE OF TEMPLATE.	DRAWN NJANSEN 1/10/2008			9105 4-WHEEL HANGER WITH ADJUSTING BOLT AND TOP PLATE				
			ENG. APPR. M MCRAE 3/20/2008							
			MATERIAL STEEL W/ NYLON B.B. WHEELS	Q.A.			TOLERANCES: FRACTIONAL: ±0.015" ANGULAR: MACH: ± 1° BEND: ±1° TWO PLACE DECIMAL: ±0.01" THREE PLACE DECIMAL: ±0.004"	SIZE <b>A</b>	DWG. NO. <b>S-SD00043</b>	REV. <b>01</b>
			FINISH ZINC PLATED							
			DO NOT SCALE DRAWING							
			SCALE:1:2		WEIGHT:0.60		SHEET 1 OF 1			