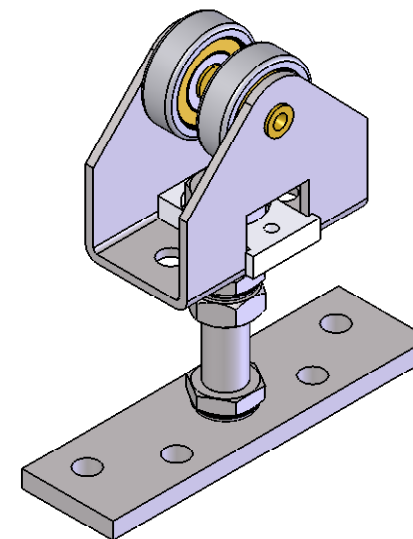


REVISIONS		
REV.	DESCRIPTION	DATE
01	NEW DRAWING FOR WEB	3/20/2008



NOTES:  
 - USE WITH 9101 TRACK, WITH DOORS WEIGHING UP TO 175 LBS (79KG)  
 - WHEELS: NYLON W/ STEEL BALL BEARINGS

HARDWARE INCLUDED:  
 - 4PCS #12 x 1-1/4" CROSS PAN HEAD WOOD SCREW  
 - 1PCS 3/8" LOCK WASHER



**PROPRIETARY & CONFIDENTIAL**  
 THE INFORMATION CONTAINED IN THIS DRAWING IS THE SOLE PROPERTY OF HAGER COMPANIES. ANY REPRODUCTION IN PART OR AS A WHOLE WITHOUT THE WRITTEN PERMISSION OF HAGER COMPANIES IS PROHIBITED.

HAGER RESERVES THE RIGHT TO MAKE DESIGN CHANGES WITHOUT NOTICE. CALL HAGER ENGINEERING AT 1-800-325-9995 FOR THE LATEST REVISION DATE OF TEMPLATE.

		DRAWN	NJANSEN	1/22/200
		ENG. APPR.	M MCRAE	3/20/200
MATERIAL	STEEL	Q.A.		
FINISH		TOLERANCES: FRACTIONAL: ±0.015" ANGULAR: MACH:± 1° BEND:± 1° TWO PLACE DECIMAL: ±0.01" THREE PLACE DECIMAL: ±0.004"		
DO NOT SCALE DRAWING				

9102		2 WHEEL HANGER W/ ADJUSTING BOLT AND TOP PLATE	
SIZE	DWG. NO.	REV.	
A	S-SD00044	01	
SCALE: 1:2	WEIGHT: 0.48	SHEET 1 OF 1	