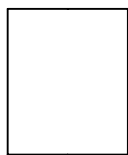
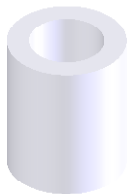
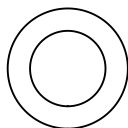
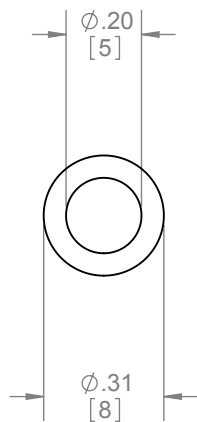



REVISIONS		
REV.	DESCRIPTION	DATE
01	NEW DRAWING FOR WEB	3/20/2008



NOTES:
 - PROPERLY SPACES TWO SINGLE TRACKS FOR 1-3/4" (44mm) DOORS
 - FOR USE WITH 9821 TRACK

HARDWARE INCLUDED:
 - 2PCS #8-32 x 1-1/2" CROSS PAN HEAD SCREW

 HAGER COMPANIES ST. LOUIS, MISSOURI	PROPRIETARY & CONFIDENTIAL THE INFORMATION CONTAINED IN THIS DRAWING IS THE SOLE PROPERTY OF HAGER COMPANIES. ANY REPRODUCTION IN PART OR AS A WHOLE WITHOUT THE WRITTEN PERMISSION OF HAGER COMPANIES IS PROHIBITED.	HAGER RESERVES THE RIGHT TO MAKE DESIGN CHANGES WITHOUT NOTICE. CALL HAGER ENGINEERING AT 1-800-325-9995 FOR THE LATEST REVISION DATE OF TEMPLATE.		DRAWN	NJANSEN	1-24-08	9573 TRACK SPACER KIT				
		MATERIAL CELCON PLASTIC		ENG. APPR.	M MCRAE	3/20/2008					
		FINISH NONE		TOLERANCES: FRACTIONAL: ±0.015" ANGULAR: MACH: ± 1° BEND: ±1° TWO PLACE DECIMAL: ±0.01" THREE PLACE DECIMAL: ±0.004"		Q.A.			SIZE A	DWG. NO. S-SD00050	REV. 01
		DO NOT SCALE DRAWING					SCALE:4:1		WEIGHT: 0.00		SHEET 1 OF 1