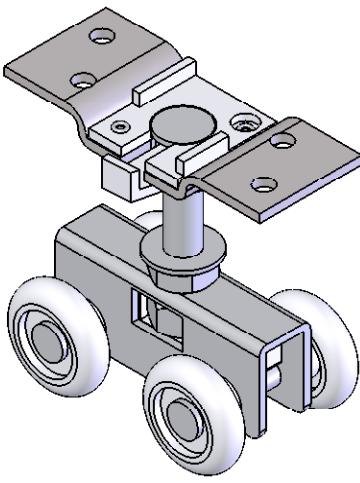
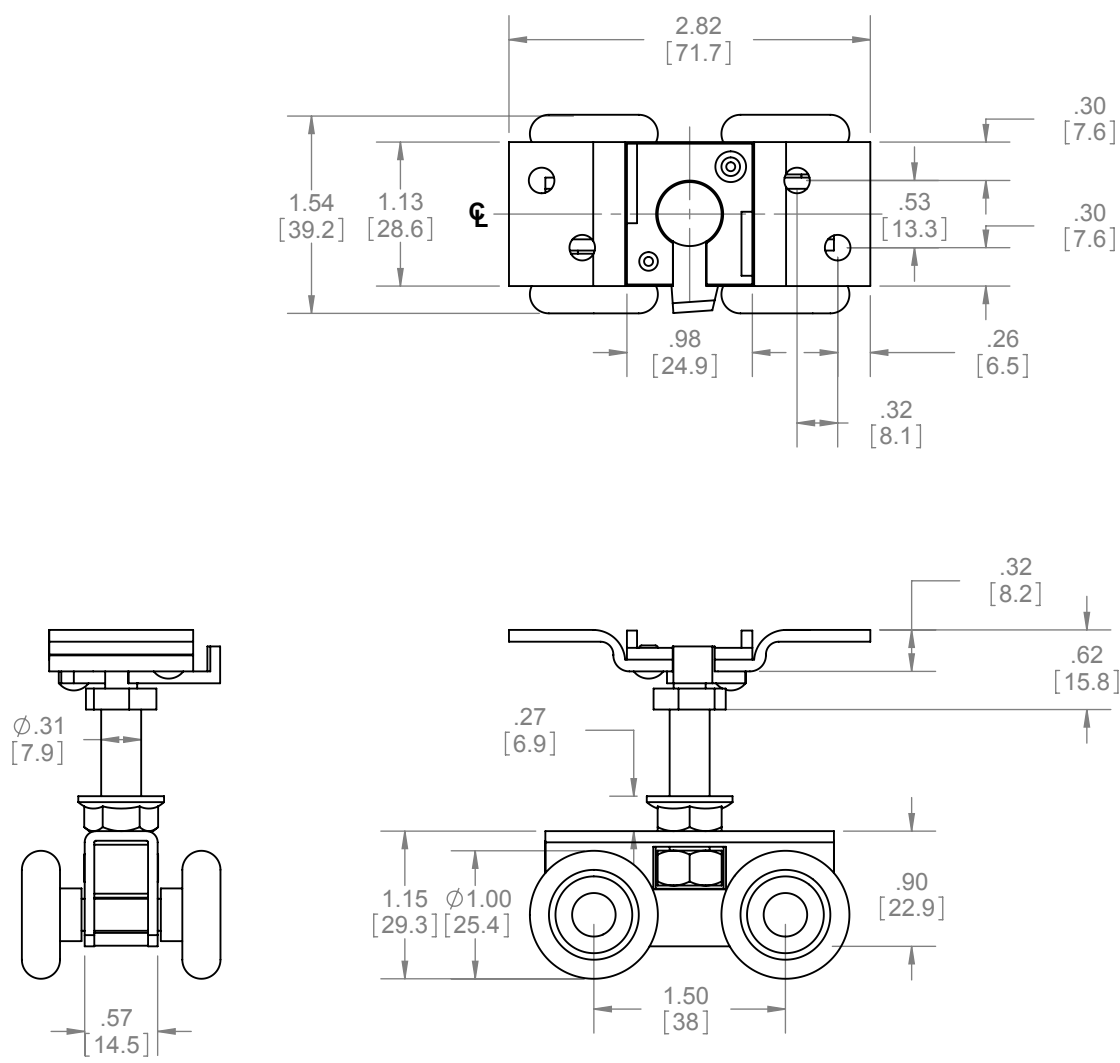


REVISIONS		
REV.	DESCRIPTION	DATE
01	NEW DRAWING FOR WEB	3/24/2008




**NOTES:**

- PRE-LUBRICATED CELCON WHEELS
- FOR DOORS UP TO 150LBS (68kg)
- FOR USE WITH 9821 TRACK
- QUICK RELEASE FEATURE ALLOWS EASY DOOR HANGING AND REMOVAL

**HARDWARE INCLUDED:**

- 4PCS #8 32 x 1" CROSS PAN HEAD SCREW(HEAD PAINTED WHITE)
- COMBO WRENCH 1/2" AND 7/16"

 <p><b>PROPRIETARY &amp; CONFIDENTIAL</b></p> <p>THE INFORMATION CONTAINED IN THIS DRAWING IS THE SOLE PROPERTY OF HAGER COMPANIES. ANY REPRODUCTION IN PART OR AS A WHOLE WITHOUT THE WRITTEN PERMISSION OF HAGER COMPANIES IS PROHIBITED.</p>	<p>HAGER RESERVES THE RIGHT TO MAKE DESIGN CHANGES WITHOUT NOTICE. CALL HAGER ENGINEERING AT 1-800-325-9995 FOR THE LATEST REVISION DATE OF TEMPLATE.</p>	DRAWN NJANSEN 1/29/2008		9824	
		ENG. APPR. M MCRAE 3/24/2008		FOUR WHEEL QUICK RELEASE HANGER	
		Q.A.			
		TOLERANCES: FRACTIONAL: ±0.015" ANGULAR: MACH: ±1° BEND: ±1° TWO PLACE DECIMAL: ±0.01" THREE PLACE DECIMAL: ±0.004"			
MATERIAL	STEEL				
FINISH	ZINC PLATED				
DO NOT SCALE DRAWING					
		SIZE	DWG. NO.	REV.	
		A	S-SD00055	01	
		SCALE: 1:1	WEIGHT: 0.29	SHEET 1 OF 1	