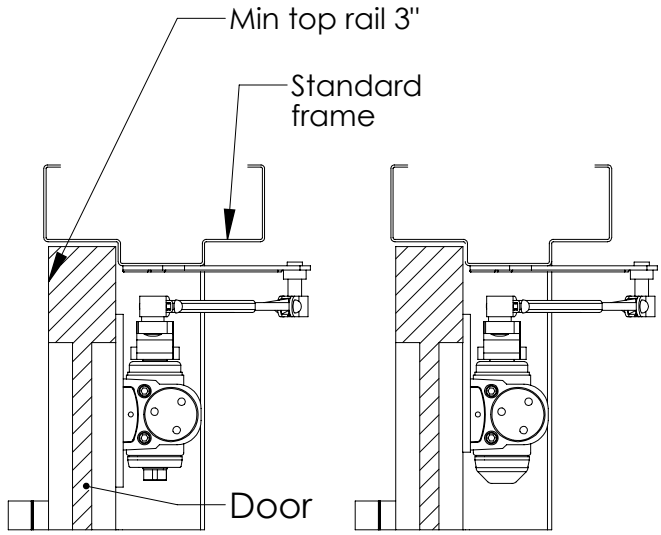


REVISIONS			
REV.	DESCRIPTION	DATE	APPROVED
01	ADD 5923 & SPECIAL NOTE	7/25/2007	

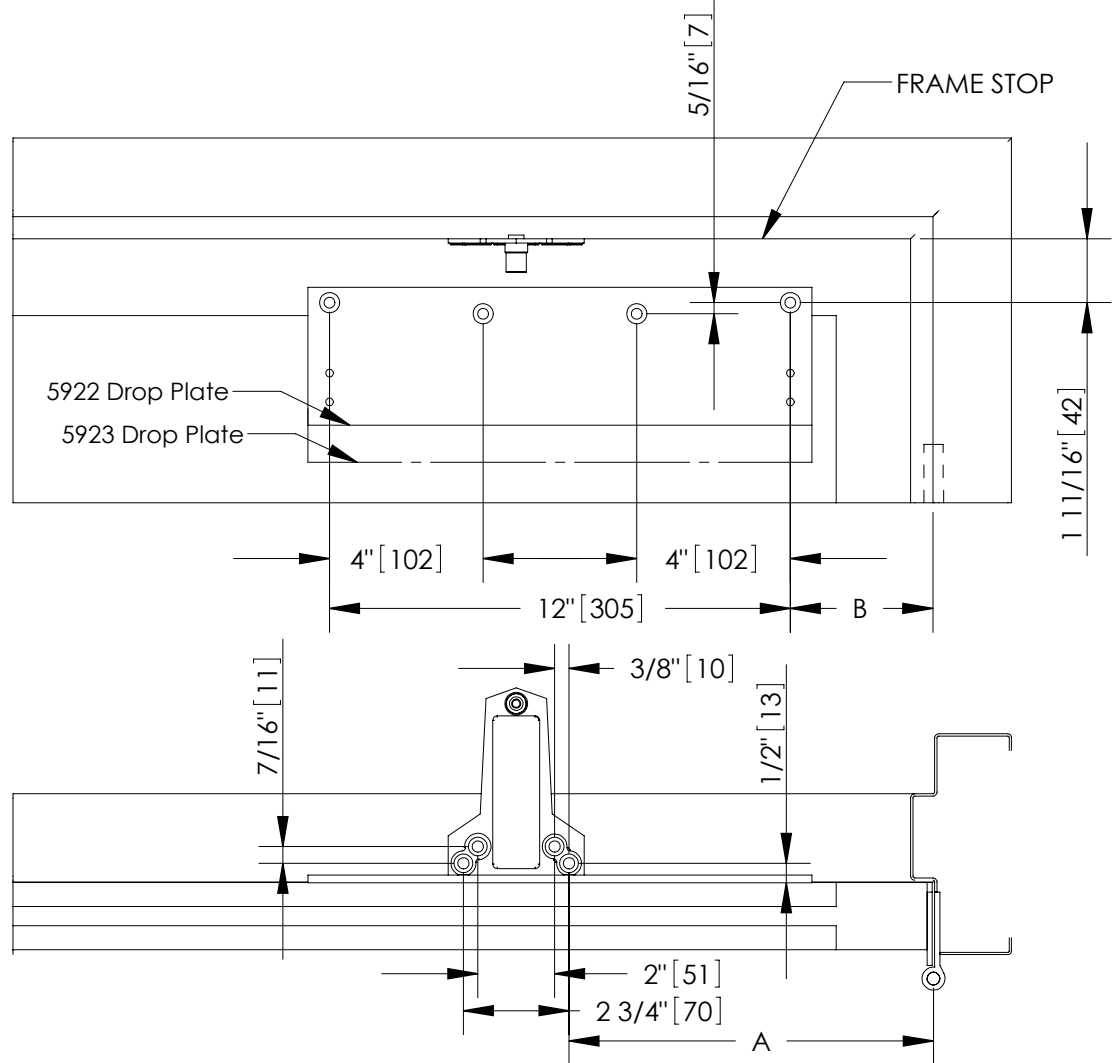


SIDE VIEW
5923 DROP PLATE

01

SIDE VIEW
5922 DROP PLATE

Opening	Dimension "A"	Dimension "B"
To 120°	9-1/2"(241mm)	3-3/4"(95mm)
121° to 180°	7"(178mm)	1-1/4"(32mm)



01

- RIGHT HAND DOOR SHOWN, LEFT HAND OPPOSITE.
- DO NOT USE THIS TEMPLATE WITH HEAVY DUTY ARMS.

SCREW PACK INCLUDES:
 4PCS. 1/4-14 X 1-1/2" SELF TAPPING FLAT HEAD WOOD SCREW
 4PCS. 1/4-20 X 1-1/2" SELF TAPPING MACHINE SCREW
 4PCS. 1/4-20 X 7/16" FLAT HEAD MACHINE SCREW



HAGER RESERVES THE RIGHT TO MAKE DESIGN CHANGES WITHOUT NOTICE. CALL HAGER ENGINEERING AT 1-800-325-9995 FOR THE LATEST REVISION DATE OF TEMPLATE.

PRIMARY DIMENSIONS SHOWN IN INCHES, DIMENSIONS IN [] ARE MILLIMETERS.

DRAWN	DMH	9/20/06
ENG. APPR.	MAM	09/25/06
MATERIAL	Material <not specified>	
FINISH	per order	
DO NOT SCALE DRAWING		

TOLERANCES:
 FRACTIONAL: ±0.015"
 ANGULAR: MACH: ± 1° BEND: ±1°
 TWO PLACE DECIMAL: ±0.01"
 THREE PLACE DECIMAL: ±0.004"

5922 & 5923 Narrow Top Rail PA Mounting Plate Template		
SIZE	DWG. NO.	REV.
A	T-CL00013	01
SCALE: 1:6	WEIGHT: -	SHEET 1 OF 1