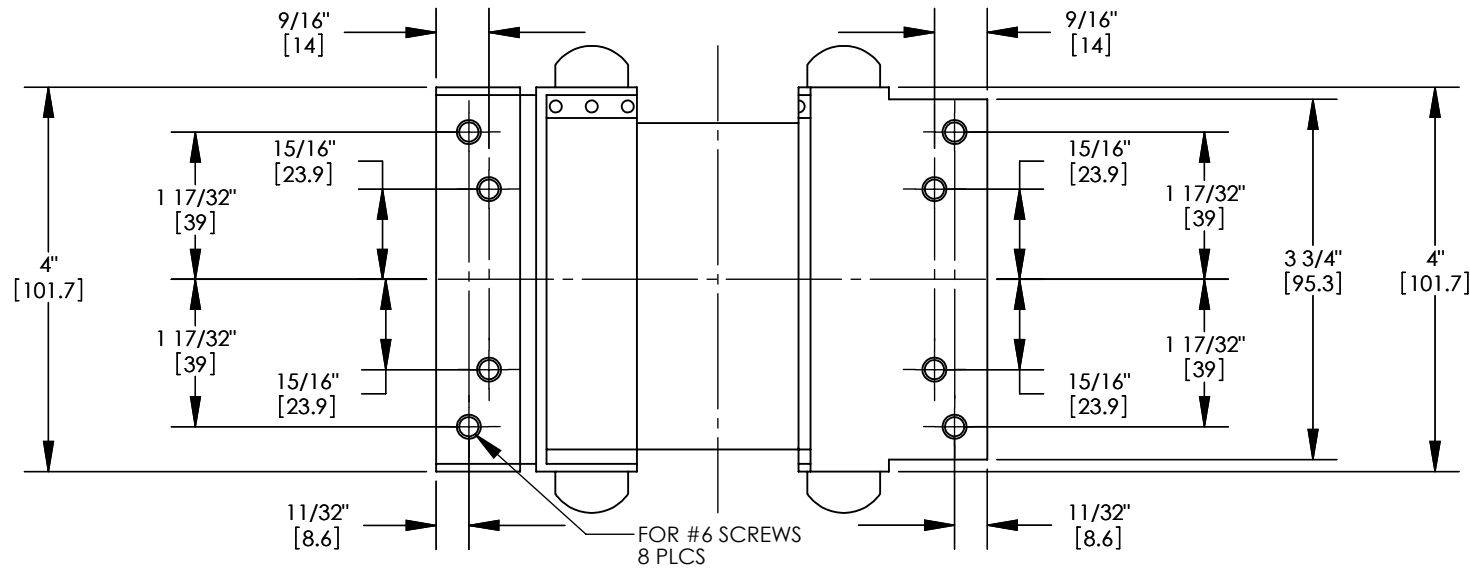
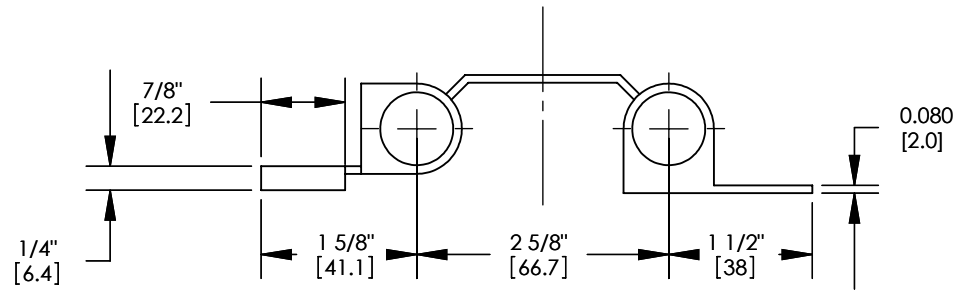
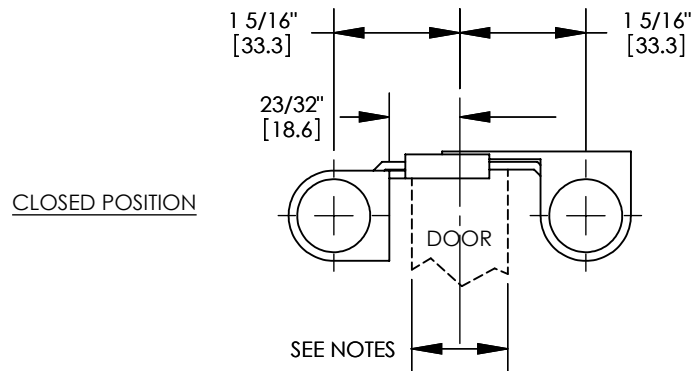


REVISIONS			
REV.	DESCRIPTION	DATE	APPROVED
A	FOR COMPUTER	03/21/06	MAM
01	UPDATED NOTES	5/20/2013	MAM



NOTES:
 MAXIMUM DOOR THICKNESS WITH CHAMFER - 1-1/4" [31.8]
 MAXIMUM DOOR THICKNESS - 1-1/8" [28.6]
 MINIMUM DOOR THICKNESS - 7/8" [22.3]
 DOOR - 75LBS. OR LESS
 3 HINGES PER DOOR



HAGER RESERVES THE RIGHT TO MAKE DESIGN CHANGES WITHOUT NOTICE. CALL HAGER ENGINEERING AT 1-800-325-9995 FOR THE LATEST REVISION DATE OF TEMPLATE.

PRIMARY DIMENSIONS SHOWN IN INCHES, DIMENSIONS IN [] ARE MILLIMETERS.

DRAWN	DMH	03/21/06
	ENG. APPR.	MAM
MATERIAL	STEEL	
FINISH	CUSTOMER SPECIFIED	
DO NOT SCALE DRAWING	TOLERANCES:	
	FRACTIONAL: ±0.015"	
	ANGULAR: MACH: ± 1° BEND: ±1°	
TWO PLACE DECIMAL: ±0.01"		
THREE PLACE DECIMAL: ±0.004"		

1303 4" DOUBLE ACTING SPRING HINGE TEMPLATE

SIZE	DWG. NO.	REV.
B	T-CT00042	01
SCALE: 1:2	WEIGHT: N/A	SHEET 1 OF 1