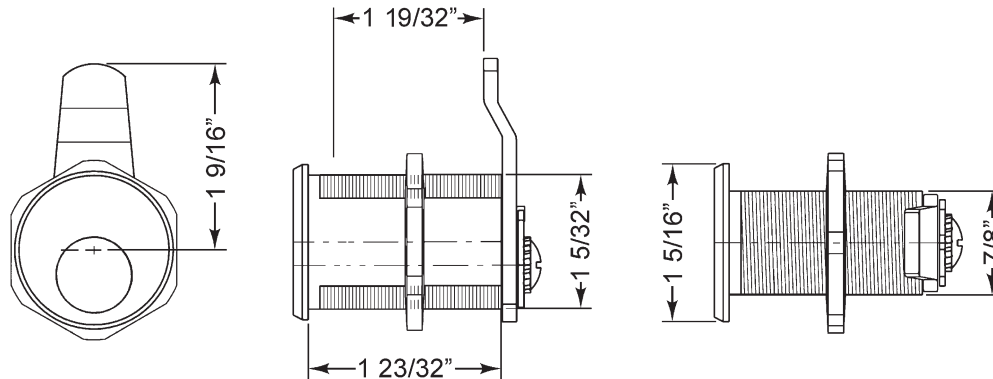


Cylinder installation for 820LC less cylinder locks

For how to install the cam and cam shifters onto the back of the lock, see the complete **INSTALLATION INSTRUCTIONS**.

IMPORTANT:

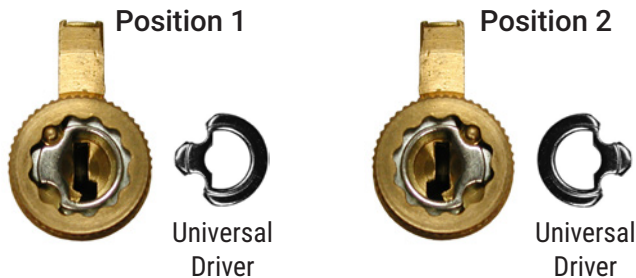
It is highly recommended that you install the **prong driver** and **lock cylinder** into the lock body and cycle to the locked position before assembling cam, cam shifter and stop pin onto the back of the lock.



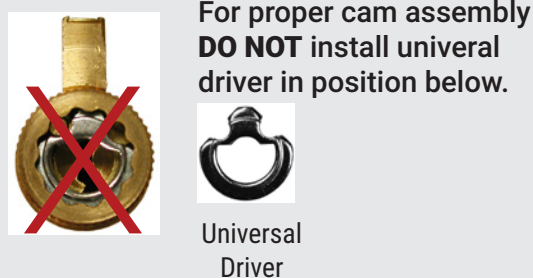
Proper Cylinder Installation

1. It is highly recommended that you install the cam/prong driver and lock cylinder into the lock body and cycle to the locked position before assembling cam, cam shifter and stop pin onto the back of the lock.
2. For lock to function correctly, you must install the universal driver into back of cylinder according to the directions below.

Correct installation (either position below will work)



Incorrect Installation



Typical Installation

Optional cams Note: use of standard and/or optional cams depends on your specific application.