

Interchangeable Core

Best Compatible (Small Format)

► 720B-DM Medical Cart Direct Drive Cam Lock

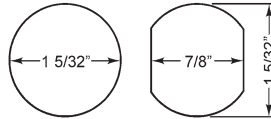
See also page 46:
724VR Medical Cart/
File Cabinet lock



For BEST style interchangeable core cylinders



MOUNTING CUTOUT



TR201
1/8"

TR202
1/4"

SPECIFICATIONS

- Retrofits: Best 1E7D4
- Cams: Will work with Best original cams
- Cylinder diameter: 1-1/8"
- Across flats: 7/8"
- Max. material thickness: 1-1/8"
- Min. material thickness: 0.08"
- Functions: Direct drive screw on cam mechanism
- Handing: LH or RH key-retaining only
- Body: Solid machined brass
- Finish: 26D
- Packaged: Packed 10 per box

KEYING INFORMATION

- Cores: Not included.
- Accepts: Best, Arrow, Falcon, KSP, Schlage SFIC or equivalent small format interchangeable cores
- Compatible electronic cylinders: Medeco Nexgen XT or VIDEX CyberLock SFIC cylinders

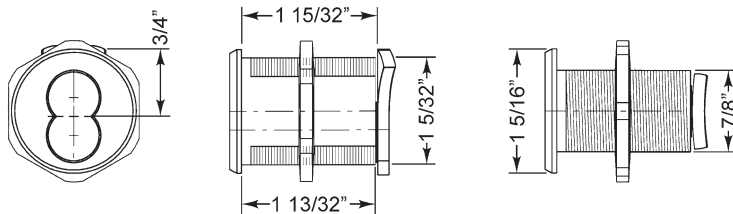
INCLUDED ACCESSORIES

- 725-PA plastic thumbturn
- 720-3-D1 short direct drive cam
- TR201 spacer collar, 1/8"
- TR202 spacer collar, 1/4"
- 725-1 spacer for 6 pin cores

OPTIONAL ACCESSORIES

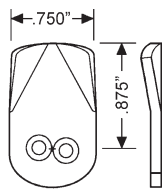
- Cam: 720-3-SC1
- Trim collars: TR200 Series
- CL-MP-118: Double-D metal punch (page 66)
- SFIC cores: 206/207 Series (page 60)

Item	Finish	Body	Cyl. Diameter	Mat. Thickness	Description
720B-DM	26D	Machined solid brass	1-1/8"	Up to 1-1/8"	Lock body - For small format IC

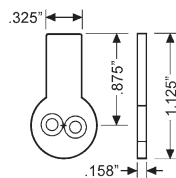


INCLUDED CAM

OPTIONAL CAM



720-3-D1
short cam



720-3-SC1
switch cam



OLYMPUS
LOCK inc

Tel: 206.362.3290 | 800.525.0954
Fax 206.362.3569 | www.olympuslock.com



The following warning is applicable to all parts listed on this page:
WARNING: This product can expose you to chemicals including chromium, which is known to the State of California to cause cancer and birth defects or other reproductive harm. for more information go to www.P65Warnings.ca.gov.