

► 996 | 997 Latch Lock

Field reversible into all four handings!



996V



996I



997R



997L

FIELD REVERSIBLE INTO ALL FOUR HANDINGS

Item	Function	Finish	Cyl. Length	Keying
997R	RH Door	26D, US4	15/16" or 1-3/8"	KD, KA 4T21579, 4T37526 Custom Keyed
997L	LH Door	26D, US4	15/16" or 1-3/8"	
996V	VH Drawer	26D, US4	15/16" or 1-3/8"	
996I	IH Drawer	26D, US4	15/16" or 1-3/8"	
Field reversible: Locks are easily reconfigured in the field into any of the four handings.				

SPECIFICATIONS

Function: Spring latch

Keying: Can be keyed together with other R Series locks

Reversible: Easily reversible between door and drawer function

Rekeyable: Easily rekeyable via set screw cylinder release mechanism

US Patent Nos: 4,899,563; 7,874,189 B2

Body: Zinc die cast

Cylinder: Solid brass, pin tumbler

Cylinder length: 15/16" or 1-3/8"

Barrel diameter: 7/8"

Latch projection: 1/4"

Finish: 26D or US4

Packaged: Packed 10 per box

KEYING INFORMATION

Keyway: R Series (equivalent to CCL R1 system)

Keys: Includes 2 keys per lock

Stock keying: KD/KA - 5 pin standard

Stock KA#: 4T21579, 4T37526

Masterkeyed: 5 pin standard, 6 pin available

Grand masterkeyed: Available

Keyblank 5-pin: KBR-5-NP
(equivalent to C0106, 1003A)

Keyblank 6-pin: KBR-6-NP
(equivalent to L1003A)

INCLUDED ACCESSORIES

Strike: 999-STRIKE (slotted lip strike)

OPTIONAL ACCESSORIES

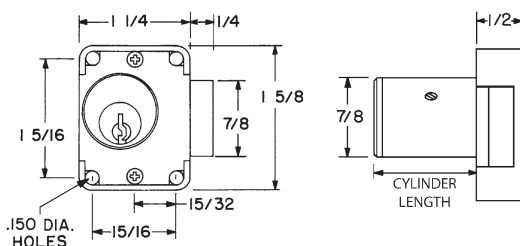
See the accessories section of this catalog for a complete list.

Spacer: WP24 (1/8" thick)

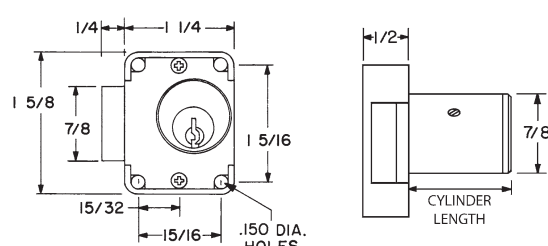
Trim ring: TR1256

Through-bolt hardware: ETS6 trim plate

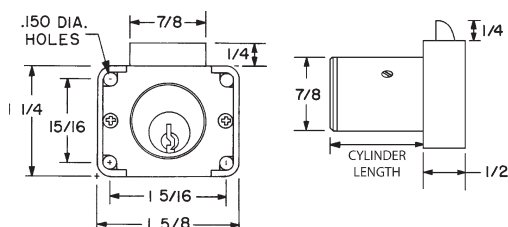
997L LEFT HAND



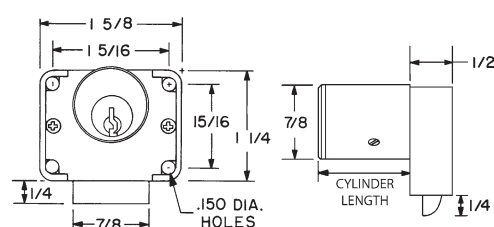
997R RIGHT HAND



996V VERTICAL HAND



996I INVERTED HAND



The following warning is applicable to all parts listed on this page:



WARNING: This product can expose you to chemicals including chromium, which is known to the State of California to cause cancer and birth defects or other reproductive harm. for more information go to www.P65Warnings.ca.gov.

