

## ► CR1125RD Rim Deadbolt

  
For CORBIN  
RUSSWIN  
interchangeable  
core cylinders



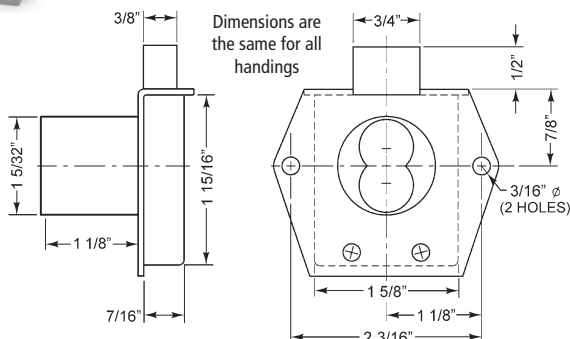
**CR1125RD**  
CR1125RDVH



CR1125RDLH



CR1125RDRH



Woodwork Institute  
(WI) acknowledged  
product

| Part No.   | Function  | Finish | Cyl. Length | Description                       |
|------------|-----------|--------|-------------|-----------------------------------|
| CR1125RDRH | RH Door   | 26D    | 1-1/8"      | Lock body - For Corbin/Russwin IC |
| CR1125RDLH | LH Door   | 26D    | 1-1/8"      |                                   |
| CR1125RDVH | VH Drawer | 26D    | 1-1/8"      |                                   |

## SPECIFICATIONS

**Mounting:** Rim (surface)

**Function:** Key removable in locked and unlocked position

**Barrel diameter:** 1-5/32"

**Cylinder length:** 1-1/8"

**Body:** Zinc die cast cylinder housing, steel back plate and steel case

**Finish:** 26D

**Packaged:** Packed 10 per box

## CYLINDER INFORMATION

**Cylinder:** Not included

**Accepts:** Corbin/Russwin interchangeable core cylinders

## INCLUDED ACCESSORIES

725-PA plastic thumbturn

1125-1 spacer to fit 6 or 7 pin cores

725-SP-RD solid rectangular strike

## OPTIONAL ACCESSORIES

See the accessories section of this catalog for a complete list.

**Spacers:** WP725 (1/8" thick), WP726 (1/4" thick)

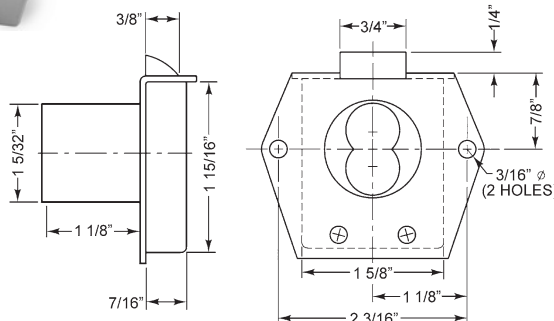
**Strikes:** 725-SP Series

## ► CR1125RL Rim Latch

  
For CORBIN  
RUSSWIN  
interchangeable  
core cylinders



**CR1125RL**  
CR1125RLVH



Woodwork Institute  
(WI) acknowledged  
product

| Part No.   | Function  | Finish | Cyl. Length | Description                       |
|------------|-----------|--------|-------------|-----------------------------------|
| CR1125RLVH | VH Drawer | 26D    | 1-1/8"      | Lock body - For Corbin/Russwin IC |

## SPECIFICATIONS

**Mounting:** Rim (surface)

**Barrel diameter:** 1-5/32"

**Cylinder length:** 1-1/8"

**Latch projection:** 1/4"

**Body:** Zinc die cast cylinder housing, steel back plate and steel case

**Finish:** 26D

**Packaged:** Packed 10 per box

## CYLINDER INFORMATION

**Cores:** Less cylinder

**Accepts:** Corbin/Russwin interchangeable core cylinders

## INCLUDED ACCESSORIES

725-PA actuator to operate lock without core

1125-1 spacer to fit 6 or 7 pin cores

725-SP-RL solid lipped strike

## OPTIONAL ACCESSORIES

See the accessories section of this catalog for a complete list.

**Spacers:** WP725 (1/8" thick), WP726 (1/4" thick)

**Strikes:** 725-SP Series



The following warning is applicable to all parts listed on this page:  
**WARNING:** This product can expose you to chemicals including chromium, which is known to the State of California to cause cancer and birth defects or other reproductive harm. for more information go to [www.P65Warnings.ca.gov](http://www.P65Warnings.ca.gov).

