

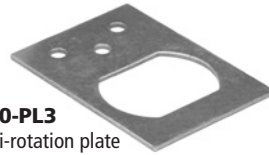
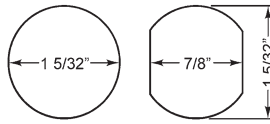
## ► CR25 Cam Lock



For CORBIN  
RUSSWIN  
interchangeable  
core cylinders



### MOUNTING CUTOUT



**720-PL3**  
anti-rotation plate

### SPECIFICATIONS

Cylinder diameter: 1-1/8"  
Across flats: 7/8"  
Max. material thickness: 1-1/8"  
Min. material thickness: 0.08"  
Functions: Includes parts for key-retaining or non-key-retaining function  
Body: Zinc die cast  
Finish: 26D  
Packaged: 10 per box

### CYLINDER INFORMATION

Cylinder: Not included  
Accepts: Corbin/Russwin interchangeable core cylinders

### INCLUDED ACCESSORIES

725-PA plastic thumbturn  
725-1 spacer to fit 6 or 7 pin cores  
720-PL3 anti-rotation plate  
720-3-1 short inverted cam  
720-3-2 long vertical cam  
720-CDLM lost motion cam shifter  
720-CDDM key retaining door cam shifter  
720-KR key retaining drawer cam shifter

### OPTIONAL ACCESSORIES

See accessories on page 76-77. See page 77 for cam assembly instructions.

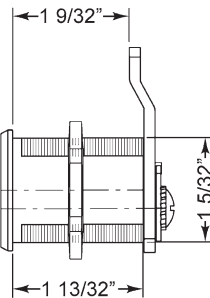
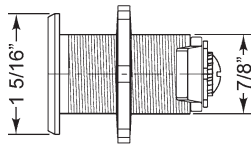
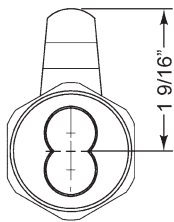
Optional cams: 720-3-3, 720-3-4, 720-3-5

Trim collars: TR200 Series

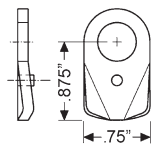
Switch accessory pack: SW-1

CL-MP-118: Double-D metal punch (page 66)

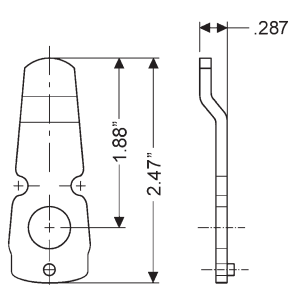
Item	Finish	Cyl. Diameter	Mat. Thickness	Description
CR25LM/DM	26D	1-1/8"	Up to 1-1/8"	Lock body - For Corbin/Russwin IC



### INCLUDED CAMS



**720-3-1**  
for inverted function



**720-3-2**  
inbent cam for vertical function  
(bottom-pin style)



**OLYMPUS  
LOCK**  
INC

Tel: 206.362.3290 | 800.525.0954  
Fax 206.362.3569 | www.olympuslock.com



The following warning is applicable to all parts listed on this page:  
**WARNING:** This product can expose you to chemicals including chromium, which is known to the State of California to cause cancer and birth defects or other reproductive harm. for more information go to [www.P65Warnings.ca.gov](http://www.P65Warnings.ca.gov).