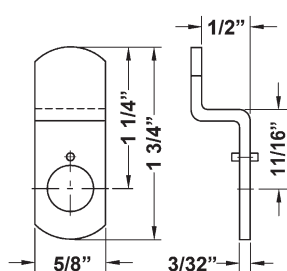


► Offset Cams For B7, DCN, DCR

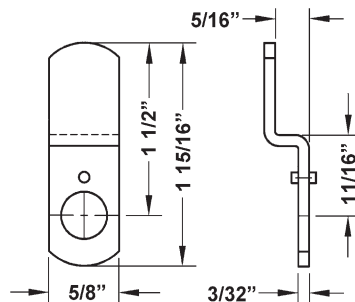
DCNP-100-BC5 1/2" offset cam
 DCNP-100-LBC long offset cam
 DCNP-100-HD 1-7/16" heavy duty offset cam
 DCNP-100-HD2 1-3/4" heavy duty offset cam
 DCNP-100-HD3 1/8" heavy duty offset cam
 DCNP-100-HC1 offset hook cam

SPECIFICATIONS

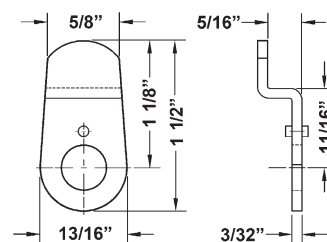
DCNP cams work with our 3/4" cam lock series DCN, DCR or B7. All offset cams are reversible and can be used in either the inbent or outbent position. See the applicable product page for accessories that ship standard with each product.



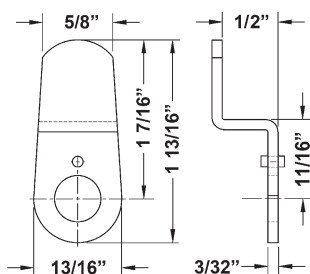
DCNP-100-BC5
1/2" offset cam



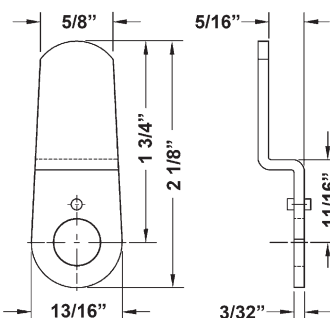
DCNP-100-LBC
15/16" offset cam



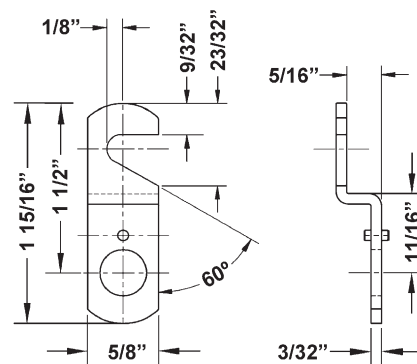
DCNP-100-HD3
1-1/8" heavy duty offset cam



DCNP-100-HD
1-7/16" heavy duty offset cam



DCNP-100-HD2
1-3/4" heavy duty offset cam



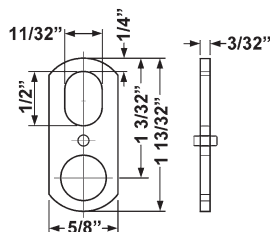
DCNP-100-HC1
offset hook cam

► Specialty Cams For B7, DCN, DCR

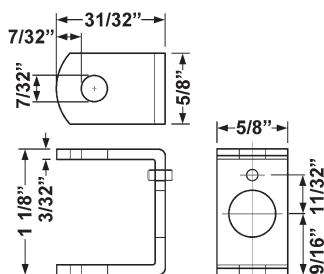
DCNP-100-B1 Straight 1-3/32" long with oval cutout
 DCNP-100-B2 U-shaped bent cam
 DCNP-100-B3 Straight hook cam
 DCNP-100-WB short cam with perpendicular arm

SPECIFICATIONS

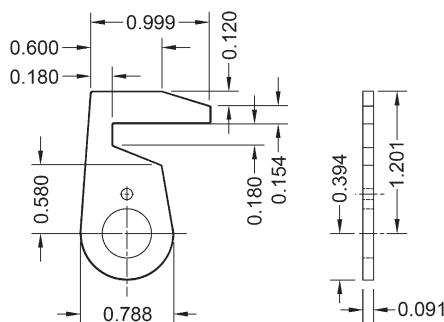
DCNP cams work with our 3/4" cam lock series DCN, DCR or B7. All offset cams are reversible and can be used in either the inbent or outbent position. See the applicable product page for accessories that ship standard with each product.



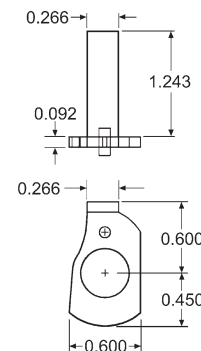
DCNP-100-B1
straight cam w/cutout



DCNP-100-B2
U-shaped cam



DCNP-100-B3
straight hook cam



DCNP-100-WB
short cam with
perpendicular arm



The following warning is applicable to all parts listed on this page:
WARNING: This product can expose you to chemicals including chromium, which is known to the State of California to cause cancer and birth defects or other reproductive harm. for more information go to www.P65Warnings.ca.gov.

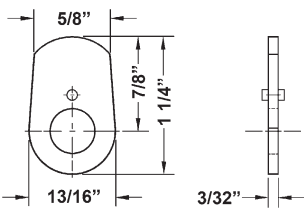


► Straight Cams For B7, DCN, DCR

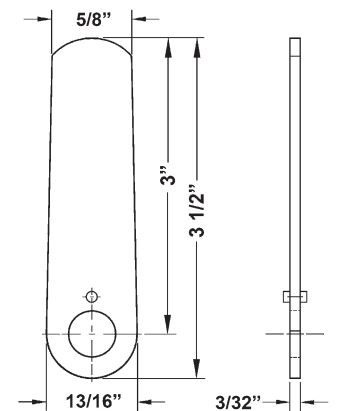
DCNP-HD-875 7/8" heavy duty straight cam
 DCNP-HD-1 1" heavy duty straight cam
 DCNP-100-SC3 1-1/2" heavy duty straight cam
 DCNP-100-SC2 1-3/4" heavy duty straight cam
 DCNP-100-LC 3" heavy duty straight cam

APPLICATION NOTE

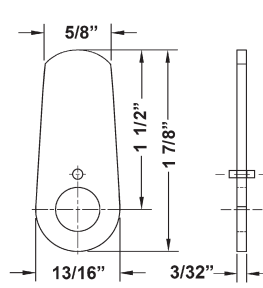
Use the DCNP-HD-875 cam with our DCN2 series cam locks to retrofit **Hollman Lockers** brand keyed cam locks.



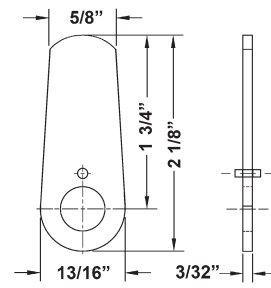
DCNP-HD-875
7/8" heavy duty cam



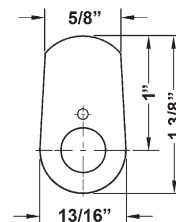
DCNP-100-LC
3" heavy duty straight cam



DCNP-100-SC3
1-1/2" heavy duty straight cam

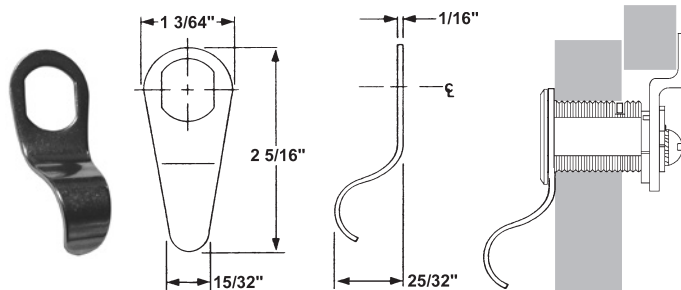


DCNP-100-SC2
1-3/4" heavy duty straight cam



DCNP-HD-1
1" heavy duty straight cam

► Other Accessories For B7, DCN, DCR



DCNP-300-FP

Finger pull for use with DCN and DCR series cam locks. Eliminates need for additional cabinet pull. Mounts between front of cam lock and cabinet face. Stainless steel finish.

KEY-RETAINING CAM SHIFTERS

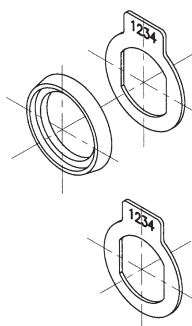


DCNP-200-KR
key-retaining drawer cam shifter



DCNP-200-KDR
key-retaining door cam shifter

NUMBER PLATES & KITS



T37-NKIT
Number Plate Kit
For use with B7 or T37 only

T37DC-NP
Number Plate
For use with DCN, DCR, B7, T37

WASHERS



DCNP-SPW
pronged wood washer



DCNP-GW
self-adhesive clear plastic washer for mounting lock on glass



OLYMPUS
LOCK

Tel: 206.362.3290 | 800.525.0954
 Fax 206.362.3569 | www.olympuslock.com



The following warning is applicable to all parts listed on this page:
WARNING: This product can expose you to chemicals including chromium, which is known to the State of California to cause cancer and birth defects or other reproductive harm. for more information go to www.P65Warnings.ca.gov.