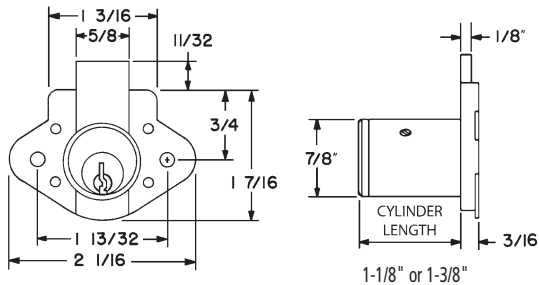
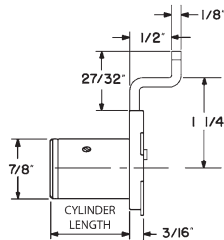


► N078 Drawer Lock



Item	Function	Finish	Cyl. Length	Keying
N078	VH Drawer	26D, US4	1-1/8" or 1-3/8"	KD, KA 101,103,107,915 Custom Keyed
Outbent bolt installed:		Specify LB1 for 1/2" offset outbent drawer bolt installed in lock.		
Outbent bolt only:		Order part number 078-LB1-DW for outbent drawer bolt only.		

OPTIONAL OFFSET BOLT



SPECIFICATIONS

Keying: Can be keyed together with other N Series locks

Rekeyable: Easily rekeyable via set screw cylinder release mechanism

US Patent Nos: 4,899,563; 4,920,774

Standard function: Key removable in locked or unlocked position.

Door locks: Can be reversed between left and right hand.

Body: Zinc die cast

Cylinder: Solid brass, pin tumbler

Cylinder length: 1-1/8" or 1-3/8"

Barrel diameter: 7/8"

Finish: 26D or US4

Packaged: Packed 10 per box

KEYING INFORMATION

Keyway: N Series (equivalent to National D4291 4-pin or D4292 5-pin system)

Keys: Includes 2 keys per lock

Stock keying: KD/KA - 4 pin standard

Stock KA#: 101, 103, 107, 915

Masterkeyed: 5 pin standard

Grand masterkeyed: Available

Keyblank 4-pin: KBN-4-NP
(equivalent to NA14, 1069L)

Keyblank 5-pin: KBN-5-NP
(equivalent to NA12, 1069LA)

OPTIONAL ACCESSORIES

See the accessories section of this catalog for a complete list.

Spacers: WP20 (3/16" thick), WP21 (3/32" thick), WP22 (1/4" thick), WP23 (1/2" thick)

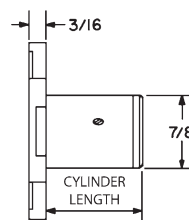
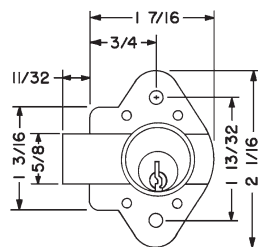
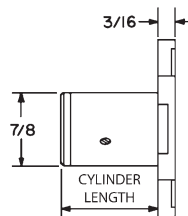
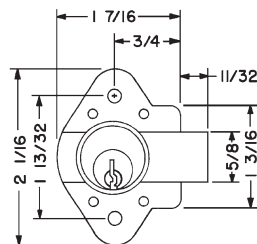
Strikes: 07S, 56-1, 12-1, 12-2, 12-3, 12-4 strikes

Trim ring: TR1256

Optional drawer bolt: 078-LB1-DW long bolt with 1/2" offset (drawer only)

Optional door bolt: 078-LB-DR 1/4" straight long bolt (door only)

► N078L | N078R Door Lock

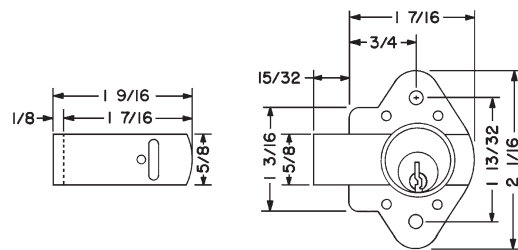


Item	Function	Finish	Cyl. Length	Keying
N078R	RH Door	26D, US4	1-1/8" or 1-3/8"	KD, KA 101,103,107,915 Custom Keyed
N078L	LH Door	26D, US4	1-1/8" or 1-3/8"	
Long bolt installed:		Specify LB for extended door bolt installed in lock.		
Long bolt only:		Order part number 078-LB-DR for extended door for bolt only.		

NOTE: N078R / N078L are reversible between left and right handings.

OPTIONAL LONG BOLT

Extends overall bolt length by an additional 1/8".
Reversible for use with LH or RH locks.



The following warning is applicable to all parts listed on this page:



WARNING: This product can expose you to chemicals including chromium, which is known to the State of California to cause cancer and birth defects or other reproductive harm. for more information go to www.P65Warnings.ca.gov.

