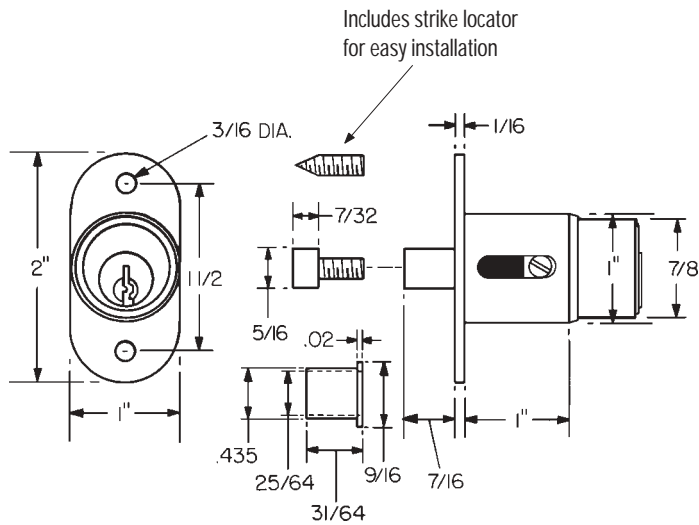
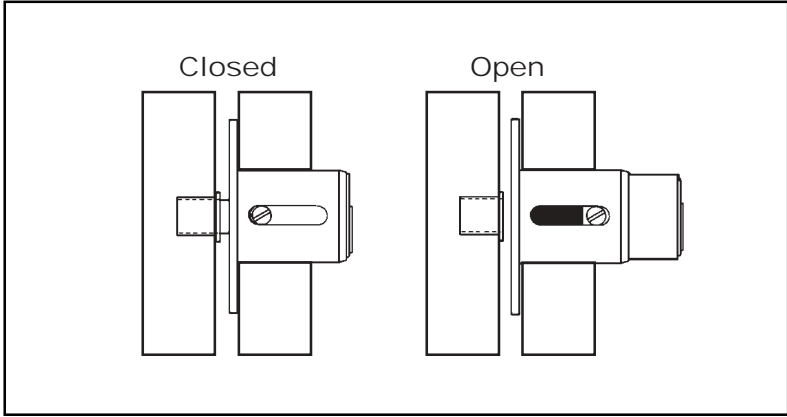


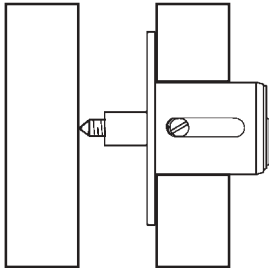
Installation Instructions

400SD

Typical Installation

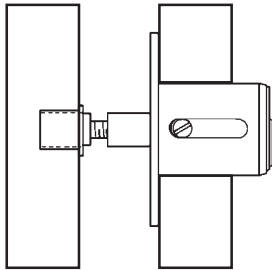


Strike Locator



Use strike locator to correctly mark location to install strike.

Bolt Extender



Use optional bolt extender for excessive gaps in bypassing doors.

Title Installation instructions for 400SD series sliding door lock				
Series 400SD	Barrel Length 1"	Bolt type Plunger	Mounting Surface	Revision Date 06/2004

