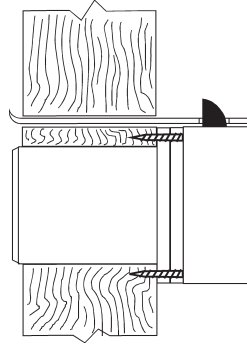
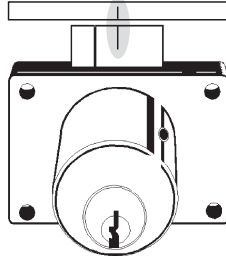


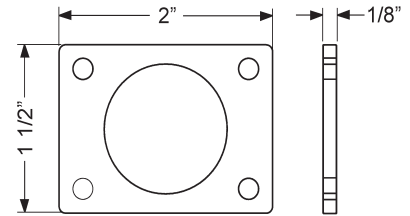
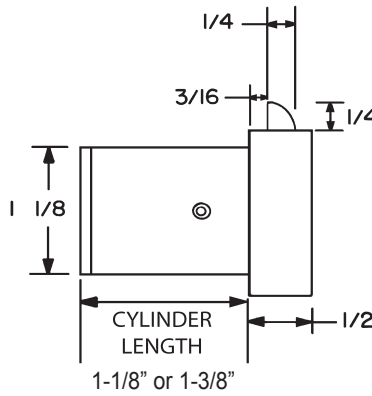
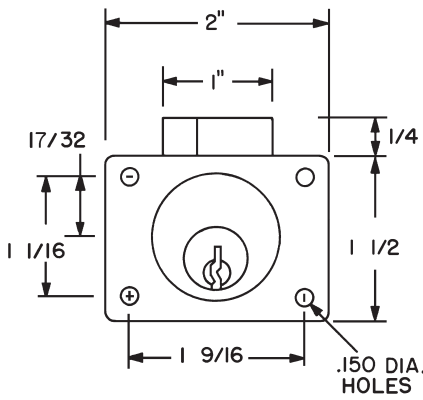
Installation Instructions

850

Note: Line up center mark on latch with center mark on strike for correct strike placement.

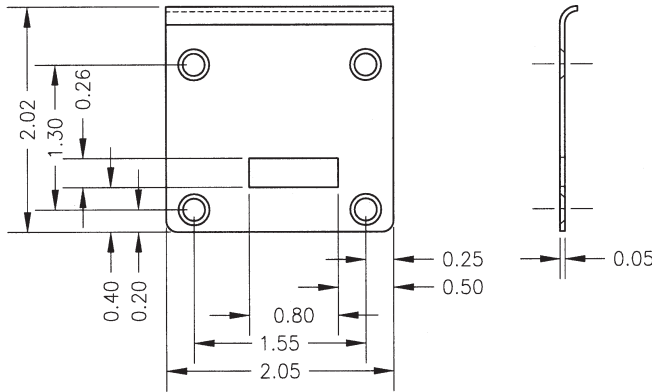


Note: Strike must be lined up so that dead lock portion of latch is depressed when drawer is closed.

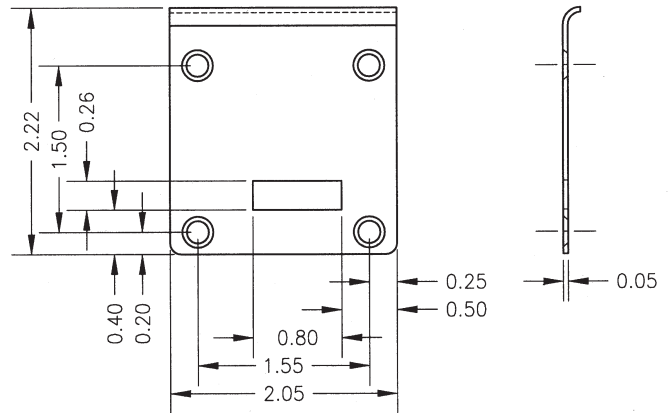


10-350 - 1/8" spacer

Note: Use of spacers and strikes depends on application and material thickness.



850-210 lip strike
for use with 1-1/8" barrel length locks



850-211 lip strike
for use with 1-3/8" barrel length locks

Title

Installation instructions for 850 series cabinet drawer lock

Series
850

Barrel Length
1-1/8" or 1-3/8"

Bolt type
Latch

Mounting
Surface

Revision Date
09/2012

OLYMPUS
LOCK, INC.