

## 300SD

### N Series: Sliding Door Plunger Lock

#### SPECIFICATIONS

**Keying:** Can be keyed together with other N Series locks

**Rekeyable:** Easily rekeyable via speed-release cylinder release mechanism

**US Patent Nos:** 4,920,774; 5,121,619

**Standard function:** Key removable in locked or unlocked position.

**Body:** Zinc die cast

**Cylinder:** Solid brass, pin tumbler

**Cylinder length:** 1"

**Barrel diameter:** 1"

**Finish:** 26D, US3 or 10B

**Packaged:** Packed 10 per box

#### KEYING INFORMATION

**Keyway:** N Series (equivalent to National D4291 4-pin or D4292 5-pin system)

**Keys:** Includes 2 keys per lock

**Stock keying:** KD/KA - 4 pin standard

**Stock KA#:** 101, 103, 107, 915

**Masterkeyed:** 5 pin standard

**Grand masterkeyed:** Available

**Keyblank 4-pin:** KBN-4-NP

(equivalent to NA14, 1069L)

**Keyblank 5-pin:** KBN-5-NP

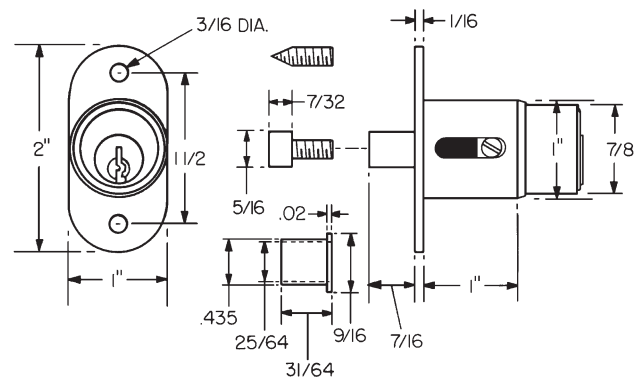
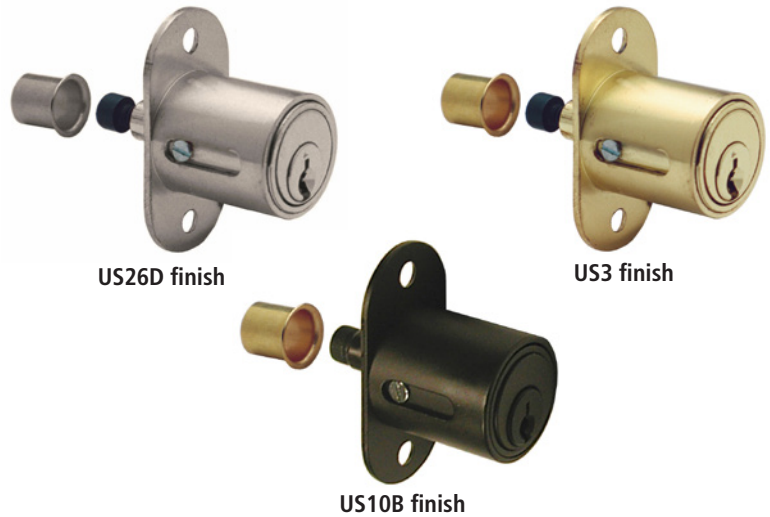
(equivalent to NA12, 1069LA)

#### INCLUDED ACCESSORIES

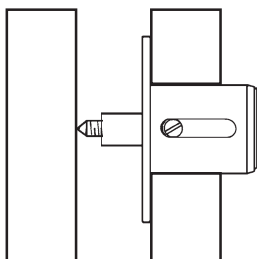
34-9 matching thimble strike

10-24 machine thread bolt extender for varying gaps between bypassing doors

10-24 machine thread strike locator

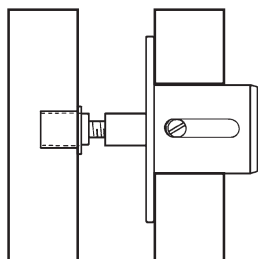


Strike Locator



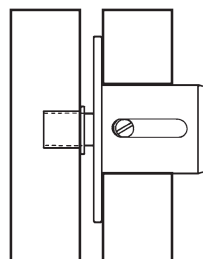
Use strike locator to correctly mark location to install strike.

Bolt Extender

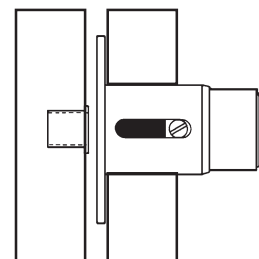


Use optional bolt extender for excessive gaps in bypassing doors.

Closed



Open



**OLYMPUS**  
**LOCK, INC.**  
*The cabinet lock innovators.*