

500M | 600M

R Series: Non-Ferrous MRI Deadbolt Door & Drawer Cabinet Locks

**ANSI/BHMA Grade 1
E07121 | E07041**
**For use in medical
MRI applications**

SPECIFICATIONS

Keying: Can be keyed together with other R Series locks

Non-magnetic: Contains all non-ferrous (non-magnetic) components and keys. Suitable for use in MRI (magnetic resonance imaging) applications. Includes copper plated non-magnetic keys.

Rekeyable: Easily rekeyable via set screw cylinder release mechanism

ANSI/BHMA: Passed ANSI/BHMA A156.11 Grade 1 performance requirements. Equivalent to E07121(500M) / E07041(600M).

Standard function: Key removable in locked or unlocked position. Standard function locks are non-handed.

Key-retaining: Key removable in locked position only. Specify handing (KL/KR for doors or KI/KV for drawers) when ordering.

Standard locks: See our 500DR/600DW products

US Patent Nos: 4,899,563; 4,920,774

Body: Zinc die cast

Cylinder: Solid brass, pin tumbler

Cylinder length: 15/16" or 1-3/8"

Barrel diameter: 7/8"

Finish: US26D

Packaged: Packed 10 per box

KEYING INFORMATION

Keyway: R Series (equivalent to CCL R1 system)

Keys: Includes 2 keys per lock

Stock keying: KD/KA - 5 pin standard

Stock KA#: 4T21579, 4T37526

Masterkeyed: 5 pin standard, 6 pin available

Grand masterkeyed: Available

Keyblank 5-pin copper plated: KBR-5B
(use with 500M/600M MRI locks)

INCLUDED ACCESSORIES

500M: 2 keys, 56-1 bar strike, and lock mounting screws

600M: 2 keys, 56-1 bar strike, and lock mounting screws

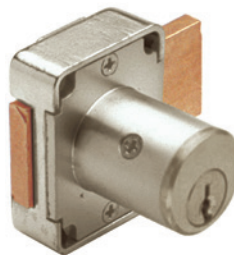
OPTIONAL ACCESSORIES

Spacers: WP21 (3/32" thick), WP22 (1/4" thick), WP23 (1/2" thick)

Trim collars: TR1256

Through-bolt hardware: ETS2 trim plate, ETS2-PL trim pull and ETST2 template

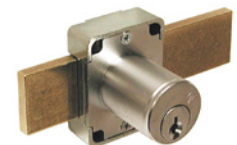
Extended (long) bolt: 15-1-35 (for use with 500M or 600M)



US26D finish



56-1



With long-bolt option

500M

Function: Cabinet door lock

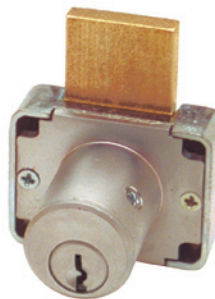
ANSI/BHMA No. E07121

Barrel length: 15/16" or 1-3/8"

Extended bolt: Extends overall bolt length by 1-1/2". Specify -LB option at time of order.



Includes copper plated non-magnetic keys



US26D finish



56-1



With long-bolt option

600M

Function: Drawer lock

ANSI/BHMA No. E07041

Barrel length: 7/8" or 1-3/8"

Extended bolt: Specify -LB option at time of order.



Includes copper plated non-magnetic keys

500M | 600M

R Series: Non-Ferrous MRI Deadbolt Door & Drawer Cabinet Locks

**ANSI/BHMA Grade 1
E07121 | E07041
For use in medical
MRI applications**

OPTIONAL ACCESSORIES - See our website for a complete list of optional components.

Internal plastic spacers

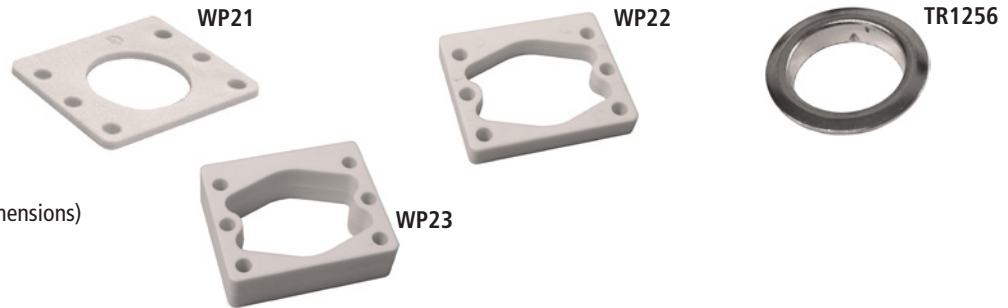
- WP21 3/32" thick plastic spacers
- WP22 1/4" thick plastic spacers
- WP23 1/2" thick plastic spacers

Trim Ring

- TR1256 trim ring

Extended bolt

- 15-1-35 (see below for installed dimensions)



Through-bolt plate

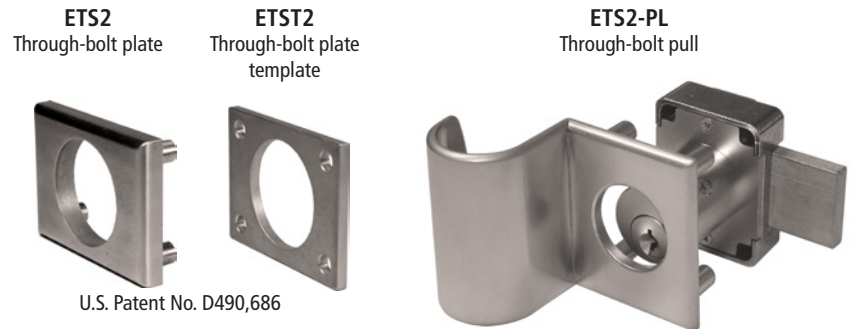
External metal 1/8" or 1/4" through-bolt plate allows for an attractive flush mounting of the cabinet lock face. Available in US3 or US26D finish.

- ETS2-125 through-bolt plate, 1/8" thick
- ETS2-250 through-bolt plate, 1/4" thick

Through-bolt plate template

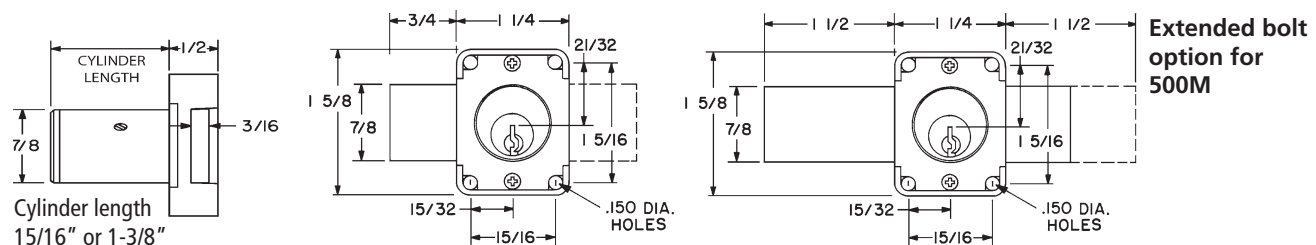
Allows for proper mounting hole placement of through-bolt plate. Can be used as a 1/8" shim spacer. Available in US3 and US26D finish.

- ETST2 through-bolt plate template



DIMENSIONS

500M Cabinet Door Lock



600M Drawer Lock

