

721DR | 721DW

SFIC: Deadbolt Door & Drawer Cabinet Locks



For BEST style
interchangeable
core cylinders

ANSI/BHMA Grade 1
E07121 | E07041
Woodwork Institute (WI)
acknowledged product

SPECIFICATIONS

Retrofits: Best 3L

Reversible: Field reversible between door and drawer functions

Testing: Passed ANSI/BHMA A156.11 Grade 1 performance requirements.

US Patent Nos: 4,899,563; 4,920,774

Body: Zinc die cast

Barrel diameter: 1-1/8"

Cylinder length: 1-1/4" or 1-3/8"

Finish: US26D (satin chrome), US4 (satin brass) or US10B (oil rubbed bronze). 1-3/8" barrel length locks available in US26D finish only.

KEYING INFORMATION

Cores: Not included

Accepts: Best, Arrow, Falcon, KSP, Schlage SFIC or equivalent small format interchangeable cores

Compatible electronic cylinders: Medeco Nexgen XT or VIDEX CyberLock SFIC cylinders.

INCLUDED ACCESSORIES

For 1-1/4" barrel length locks:

- 725-1 spacer to fit 6 or 7 pin cores
- 725-PA plastic thumbturn
- 10-350 (qty 3) plastic spacers
- 10-054 1/4" plastic bar strike
- 10-057 .65" plastic bar strike

For 1-3/8" barrel length locks:

- 725-1 spacer to fit 6 or 7 pin cores
- 725-PA plastic thumbturn
- 10-054 1/4" plastic bar strike



ANSI/BHMA
No. E07121

721DR

Function: Cabinet door lock

Standard function: Key removable in locked or unlocked position. Standard locks are non-handed.

Key-retaining function: Key removable in locked position only. Specify -KR for key-retaining.



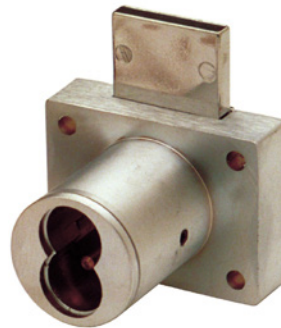
US3



US10B



US26



ANSI/BHMA
No. E07041

721DW

Function: Drawer lock

Standard function: Key removable in locked or unlocked position. Standard locks are non-handed.

Key-retaining function: Key removable in locked position only. Specify -KR for key-retaining.



US3

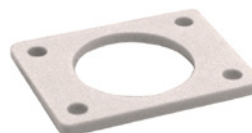


US10B



US26

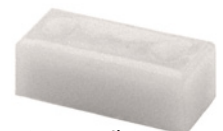
INCLUDED ACCESSORIES



10-350 internal spacers
For a flush fit on varying
material thicknesses

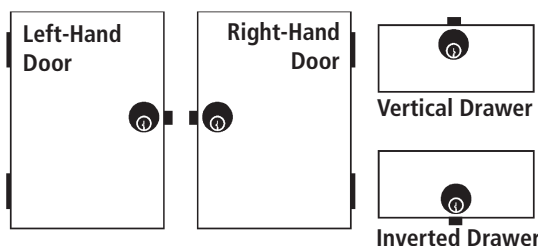


10-054 bar strike
1/4" plastic bar strike



10-057 strike
.65" plastic bar strike

HANDING CHART



OLYMPUS
LOCK, INC.
The cabinet lock innovators.

721DR | 721DW

ANSI/BHMA Grade 1
E07121 | E07041

SFIC: Deadbolt Door & Drawer Cabinet Locks

OPTIONAL ACCESSORIES - See our website for a complete list of optional components.

Internal Plastic Spacers

- 10-350 1/8" thick plastic spacers
- 10-348 1/4" thick plastic spacers
- 10-349 1/2" thick plastic spacers

Strikes

- Plastic bar strikes: 10-054, 10-055, 10-057, 10-058. Metal strikes: 10-056 12-1, 12-2, 12-3, 12-4

Trim Ring

- TR78 trim ring

206/207 Series

- 206 Series 6-pin SFIC cylinder
- 207 Series 7-pin SFIC cylinder



BEST compatible
interchangeable
core cylinders



AVAILABLE KEYWAYS

A	B	C	D	E	F	G	H	
J	K	L	M	Q	1C	1D	KMT300	

Through-Bolt Mounting Plate

External metal 1/8" or 1/4" through-bolt plate allows for secure and attractive flush mounting of the cabinet lock face. Available in US3 or US26D finish.

- ETS1-125 through-bolt plate, 1/8" thick
- ETS1-250 through-bolt plate, 1/4" thick

Through-Bolt Mounting Plate Template

Allows for proper mounting hole placement of through-bolt plate. Can be used as a 1/8" shim spacer. Available in US3 and US26D finish.

- ETST2 through-bolt plate template

ETS1
Through-bolt plate

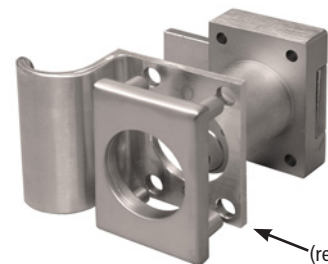


ETST1
Through-bolt plate
template



U.S. Patent No. D490,686

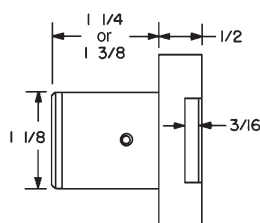
ETS1-PL
Through-bolt pull



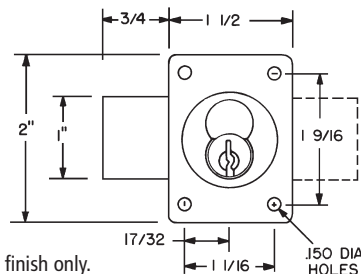
ETS1-PL
(requires use of
ETS1)

DIMENSIONS | TYPICAL INSTALLATION

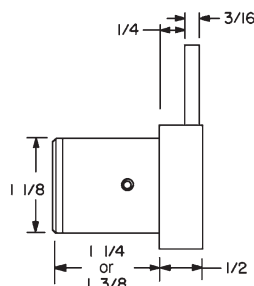
721DR Cabinet Door Lock



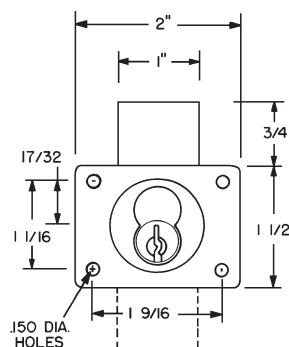
1-3/8" cylinder length available in US26D finish only.



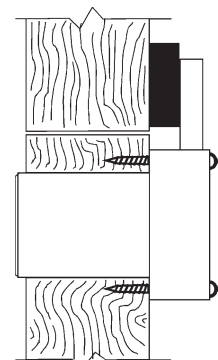
721DW Drawer Lock



1-3/8" cylinder length available in US26D finish only



Typical Installation



721DR - top view
721DW - side view