

## 722S | 722S-TBM

### SFIC: Sliding Door Plunger Lock



BEST compatible  
interchangeable  
core cylinders

#### SPECIFICATIONS

**Retrofits:** Best 2S, 2S-TBM

**Standard function:** Key removable in locked and unlocked position.

**Key-retaining function:** Key removable in locked position only. Specify **-KR** for key-retaining.

**TBM function:** Specify TBM for "through-bolt mounting"

**Body:** Solid brass

**Barrel length:** 1-3/4"

**Bolt throw:** 1/2"

**Max. door thickness:** 1-7/8"

**Min. door thickness (TBM):** 5/8"

**Finish:** 26D

**Packaged:** Packed 10 per box

#### KEYING INFORMATION

**Cores:** Not included

**Accepts:** Best, Arrow, Falcon, KSP, Schlage SFIC or equivalent small format interchangeable cores

**Compatible electronic cylinders:** Medeco  
Nexgen XT or VIDEX CyberLock SFIC cylinders

#### INCLUDED ACCESSORIES

725-1 spacer to fit 6 or 7 pin cores

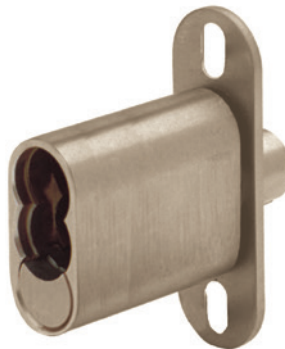
Matching strike

725-PA plastic thumbturn

TBM locks include through-bolt plates and screws

#### OPTIONAL ACCESSORIES

SFIC cores: 206/207 Series



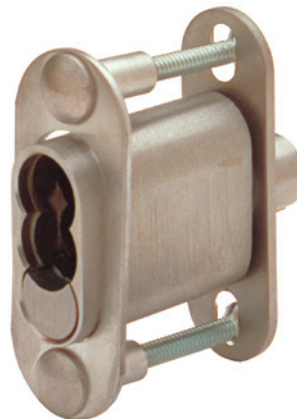
### 722S

**Function:** Sliding door plunger lock for bypassing sliding doors

**Material:** Fits up to 1-3/4" material

**Standard function:** Key removable in locked or unlocked position. Standard locks are non-handed.

**Key-retaining function:** Key removable in locked position only. Specify **-KR** for key-retaining.



### 722S-TBM

**Function:** Sliding door plunger lock for bypassing sliding doors. Includes with through-bolt mounting hardware.

**Material:** Fits up to 1-3/4" material

**Standard function:** Key removable in locked or unlocked position. Standard locks are non-handed.

**Key-retaining function:** Key removable in locked position only. Specify **-KR** for key-retaining.

# 722S | 722S-TBM

## SFIC: Sliding Door Plunger Lock

**OPTIONAL ACCESSORIES** - See our website for a complete list of optional components.

### 206/207 Series

- 206 Series 6-pin SFIC cylinder
- 207 Series 7-pin SFIC cylinder



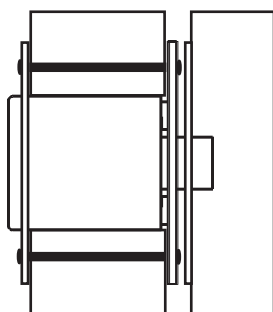
BEST compatible  
interchangeable  
core cylinders



### AVAILABLE KEYWAYS

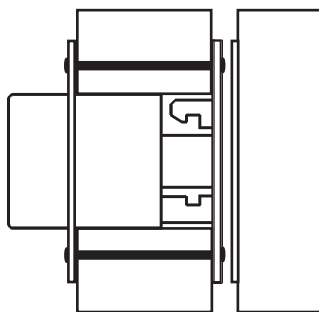
A	B	C	D	E	F	G	H	
J	K	L	M	Q	1C	1D	KMT300	

722S-TBM Locked



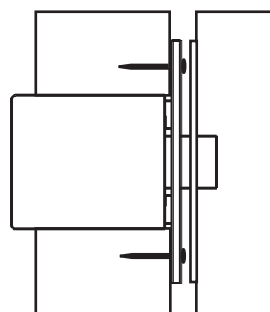
Through-bolt mount

722S-TBM Unlocked

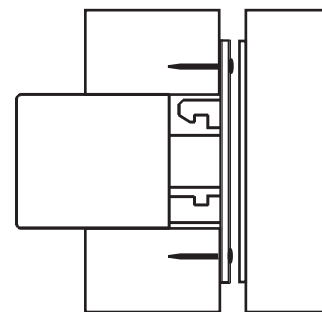


Through-bolt mount

722S Locked



722S Unlocked



## DIMENSIONS

