

725RSL

SFIC: Enclosure Lock for NEMA Metal Traffic Control Boxes



BEST compatible interchangeable core cylinders

As installed on inside of metal cabinet door.



GENERAL SPECIFICATIONS

Retrofits: Best 5L7RD (with option code "SL" square latch, spring loaded)

Function: Square latch, spring loaded

Mounting: Rim (surface) mounted

Handing: Available for doors or drawers

Cylinder housing: Solid brass

Barrel diameter: 1-1/8"

Cylinder length: 1-1/16"

Finish: US26D (satin chrome) or US4 (satin brass).

KEYING INFORMATION

Cores: Not included

Accepts: Best, Arrow, Falcon, KSP, Schlage SFIC or equivalent small format interchangeable cores

Compatible electronic cylinders: Medeco Nexgen XT or VIDEX CyberLock SFIC cylinders.

INCLUDED ACCESSORIES

725-1 spacer to fit 6 or 7 pin cores

725-SP-RL solid lipped strike

725-PA plastic thumbturn

Spring loaded square bolt.



725RSL

725RSL

Specialty function: Spring loaded square bolt. For standard deadbolt function, see 725RD or 725MD Series locks.

AVAILABLE FUNCTIONS



725RSL

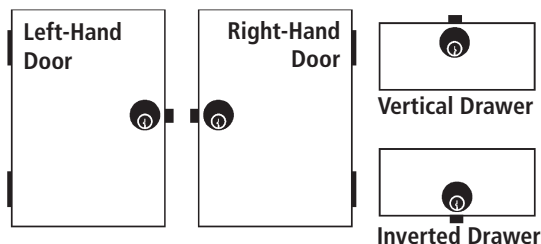


725RSL-LH



725RSL-RH

HANDING CHART



INCLUDED ACCESSORIES



725-PA



725-SP-RL



725-1

725RSL

SFIC: Enclosure Lock for NEMA Metal Traffic Control Boxes

OPTIONAL ACCESSORIES- See our website for a complete list of optional components.

206/207 Series

- 206 Series 6-pin SFIC cylinder
- 207 Series 7-pin SFIC cylinder



BEST compatible interchangeable core cylinders



AVAILABLE KEYWAYS

A	B	C	D	E	F	G	H	
J	K	L	M	Q	1C	1D	KMT300	

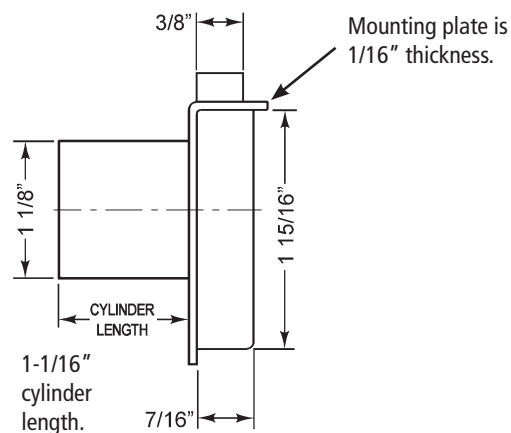
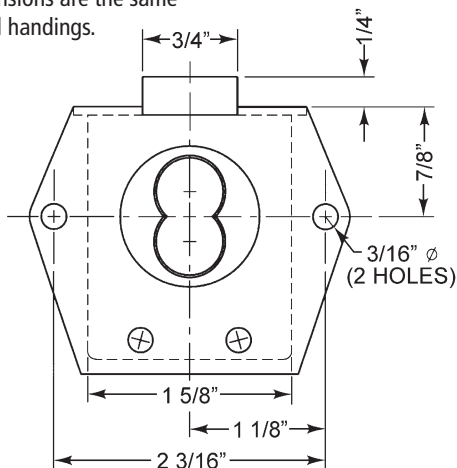
207 Series (BL/GR/RD)

- 207 Series 7-pin A keyway SFIC cylinders available in BLUE, GREEN or RED.

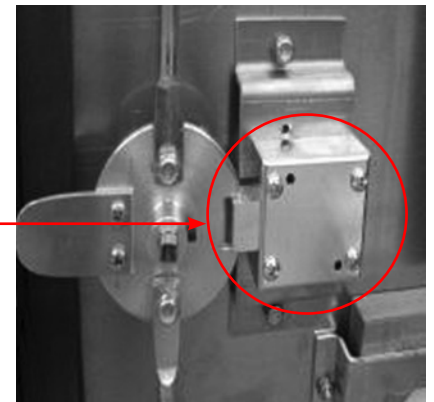
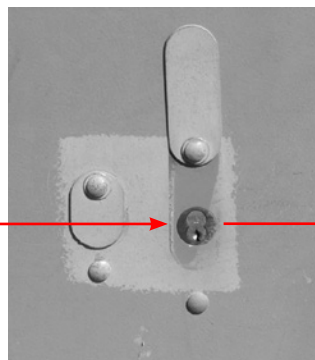
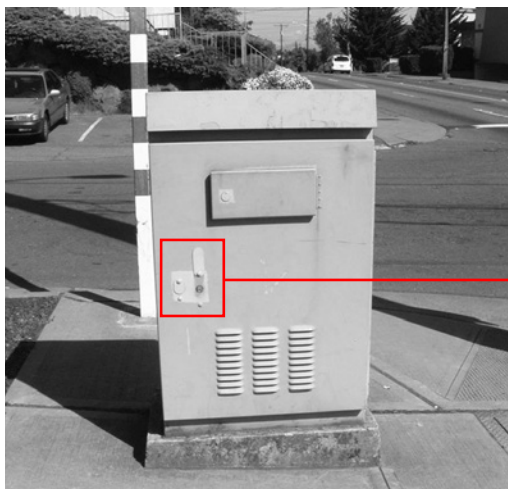


DIMENSIONS

Dimensions are the same for all handings.



TYPICAL INSTALLATION



As installed on inside of metal cabinet door.