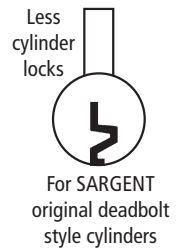


# 754LC | 854LC

**LC Series: Less Cylinder Deadbolt  
Door & Drawer Cabinet Locks for  
Sargent Original Cylinders**



## GENERAL SPECIFICATIONS

**Keyway:** LC Series, less cylinder locks accept Sargent deadbolt-style 6-pin cylinder C480-2 (13-3457)

**Rekeyable:** Easily rekeyable via set-screw cylinder removal mechanism

**Standard function:** Key removable in locked or unlocked position (non-handed)

**US Patent Nos:** 4,899,563; 4,920,774

**Body:** Zinc die cast

**Bolt:** Brass.

**Barrel diameter:** 1-1/8"

**Barrel length:** 1-3/8"

**Finish:** US26D (satin chrome) or US3 (polished brass)

**Includes:** All parts to work with Sargent original cylinder (see cylinder information below)

## CYLINDER INFORMATION

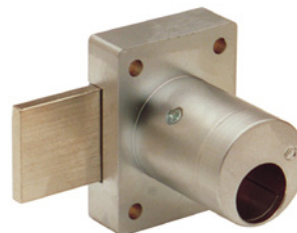
**Cylinder:** Not included

**Accepts:** Sargent C480-2 (13-3457) 6-pin deadbolt cylinder

## 754LC

**Function:** Cabinet door lock

**Bolt throw:** 15/16"



US26D finish



US3 finish

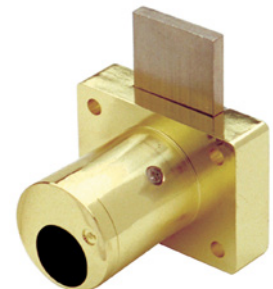
## 854LC

**Function:** Drawer lock

**Bolt throw:** 7/8"

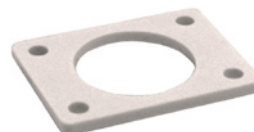


US26D finish



US3 finish

## INCLUDED ACCESSORIES



**10-350** internal spacers  
For a flush fit on varying  
material thicknesses



**10-056** strike  
Notched bar strike

# 754LC | 854LC

## LC Series: Less Cylinder Deadbolt Door & Drawer Cabinet Locks for Sargent Original Cylinders

**OPTIONAL ACCESSORIES** - See our website for a complete list of optional components.

### Internal Plastic Spacers

- 10-350 1/8" thick plastic spacers
- 10-348 1/4" thick plastic spacers
- 10-349 1/2" thick plastic spacers



### Strikes

- Plastic bar strikes: 10-054, 10-055, 10-057, 10-058.
- Metal strikes: 10-056 12-1, 12-2, 12-3, 12-4

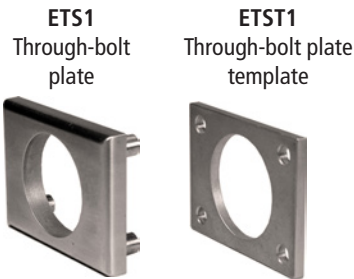
### Trim Ring

- TR78 trim ring

### Through-Bolt Mounting Plate

External metal 1/8" or 1/4" through-bolt plate allows for secure and attractive flush mounting of the cabinet lock face. Available in US3 or US26D finish.

- ETS1-125 through-bolt plate, 1/8" thick
- ETS1-250 through-bolt plate, 1/4" thick

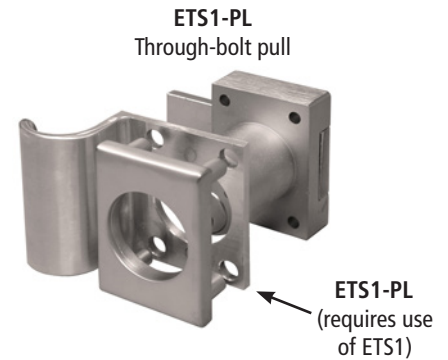


U.S. Patent No. D490,686

### Through-Bolt Mounting Plate Template

Allows for proper mounting hole placement of through-bolt plate. Can be used as a 1/8" shim spacer. Available in US3 and US26D finish.

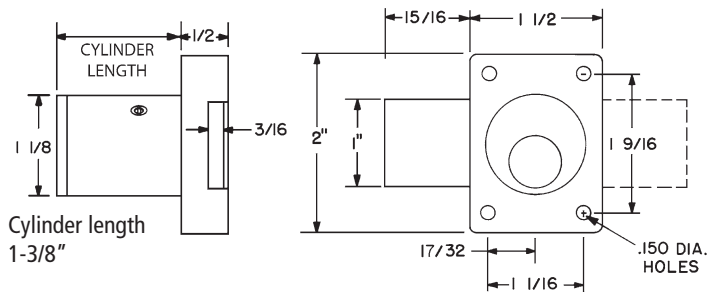
- ETST2 through-bolt plate template



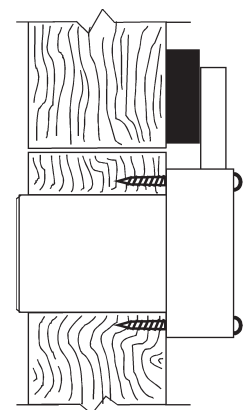
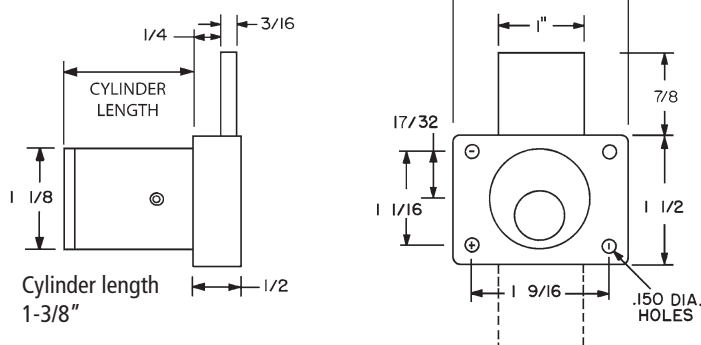
ETS1-PL (requires use of ETS1)

## DIMENSIONS | TYPICAL INSTALLATION

### 754LC Door Lock



### 854LC Drawer Lock



754LC - top view  
854LC - side view