

950IC

SFIC: Deadlatching Drawer Lock



For BEST style
interchangeable
core cylinders

SPECIFICATIONS

Function: Deadlocking latch

U.S. Patent No: 4,899,563; 4,922,774; 5,657,652

Body: Zinc die cast

Cylinder length: 1-1/8"

Barrel diameter: 1-1/8"

Latch projection: 1/4"

Finish: 26D or US3

Packaged: Packed 10 per box

KEYING INFORMATION

Cores: Not included.

Accepts: Best, Arrow, Falcon, KSP, Schlage SFIC or equivalent small format interchangeable cores

Compatible electronic cylinders: Medeco Nexgen XT or VIDEX CyberLock SFIC cylinders

INCLUDED ACCESSORIES

10-350 spacers (qty 2)

725-1 spacer to fit 6 or 7 pin cores

850-210 matching strike

725-PA plastic thumbturn

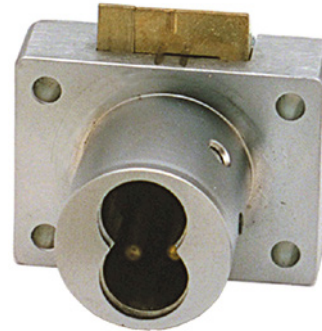
OPTIONAL ACCESSORIES

Spacers: 10-350 (1/8" thick), 10-348 (1/4" thick), 10-349 (1/2" thick)

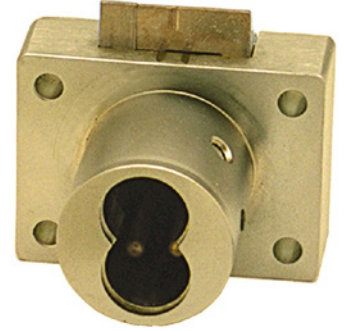
Trim ring: TR78

Through-bolt hardware: ETS1 trim plate, ETS1-PL trim pull and ETST1 template

SFIC cores: 206/207 Series

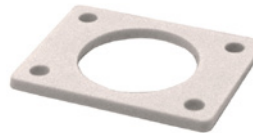


US26D finish



US3 finish

INCLUDED ACCESSORIES



10-350 internal spacers
For a flush fit on varying
material thicknesses



850-210 / 850-211
lip strike

950IC

SFIC: Deadlatching Drawer Lock

OPTIONAL ACCESSORIES

Internal Plastic Spacers

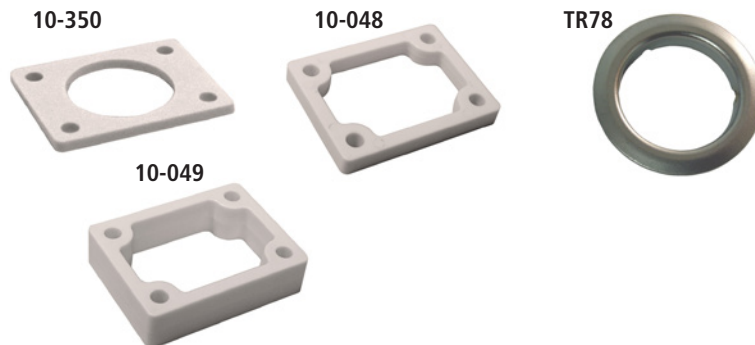
- 10-350 1/8" thick plastic spacers
- 10-348 1/4" thick plastic spacers
- 10-349 1/2" thick plastic spacers

Strikes

- Plastic bar strikes: 10-054, 10-055, 10-057, 10-058.
- Metal strikes: 10-056 12-1, 12-2, 12-3, 12-4, 999-STRIKE, L78ST-1, L78ST-2

Trim Ring

- TR78 trim ring



Through-Bolt Mounting Plate

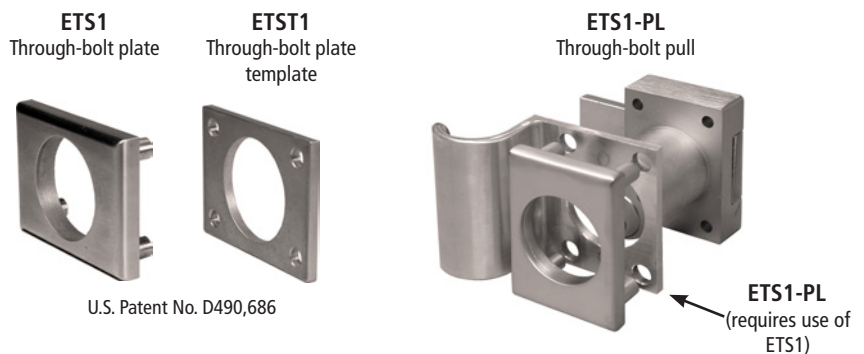
External metal 1/8" or 1/4" through-bolt plate allows for secure and attractive flush mounting of the cabinet lock face. Available in US3 or US26D finish.

- ETS1-125 through-bolt plate, 1/8" thick
- ETS1-250 through-bolt plate, 1/4" thick

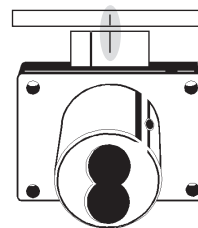
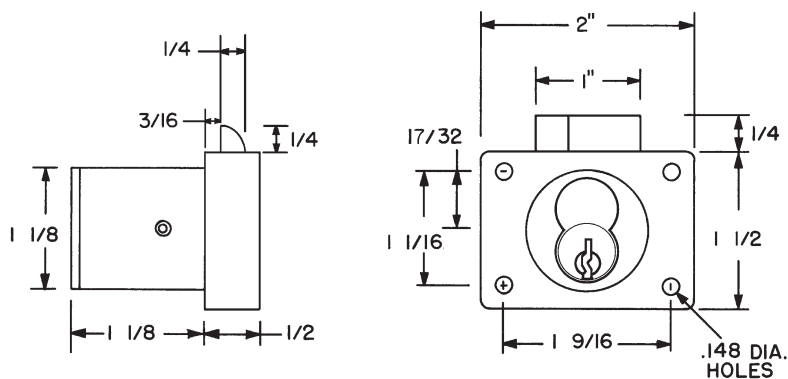
Through-Bolt Mounting Plate Template

Allows for proper mounting hole placement of through-bolt plate. Can be used as a 1/8" shim spacer. Available in US3 and US26D finish.

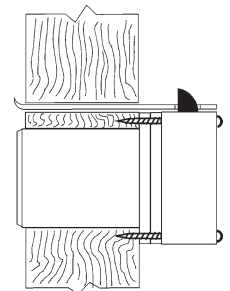
- ETST2 through-bolt plate template



DIMENSIONS | TYPICAL INSTALLATION



Note: Line up center mark on latch with center mark on strike for correct strike placement.



Note: Strike must be lined up so that dead lock portion of latch is depressed when drawer is closed.