

# 996 | 997

## R Series: Door & Drawer Latch Lock — 4-way Reversible

*Easily field reversible  
between door and  
drawer function*

### SPECIFICATIONS

**Function:** Spring latch  
**Keying:** Can be keyed together with other R Series locks  
**Reversible:** Easily reversible between door and drawer function  
**Rekeyable:** Easily rekeyable via set screw cylinder release mechanism  
**US Patent Nos:** 4,899,563; 7,874,189 B2  
**Body:** Zinc die cast  
**Cylinder:** Solid brass, pin tumbler  
**Barrel length:** 15/16" or 1-3/8"  
**Barrel diameter:** 7/8"  
**Latch projection:** 1/4"  
**Finish:** 26D or US4  
**Packaged:** Packed 10 per box

### KEYING INFORMATION

**Keyway:** R Series (equivalent to CCL R1 system)  
**Keys:** Includes 2 keys per lock  
**Stock keying:** KD/KA - 5 pin standard  
**Stock KA#:** 4T21579, 4T37526  
**Masterkeyed:** 5 pin standard, 6 pin available  
**Grand masterkeyed:** Available  
**Keyblank 5-pin:** KBR-5-NP (equivalent to CO106, 1003A)  
**Keyblank 6-pin:** KBR-6-NP (equivalent to L1003A)

### INCLUDED ACCESSORIES

**Strike:** 999-STRIKE (slotted lip strike)

### OPTIONAL ACCESSORIES

**Spacer:** WP24 (1/8" thick)  
**Trim ring:** TR1256  
**Through-bolt hardware:** ETS6 trim plate

### 996

**Function:** Drawer lock  
**Handing:** Available in the vertical or inverted position

#### VERTICAL DRAWER



US26D finish



US4 finish

#### INVERTED DRAWER



US26D finish



US4 finish

### 997

**Function:** Cabinet door lock  
**Handing:** Available in the left-hand or right-hand position

#### LEFT-HAND DOOR



US26D finish



US4 finish

#### RIGHT-HAND DOOR

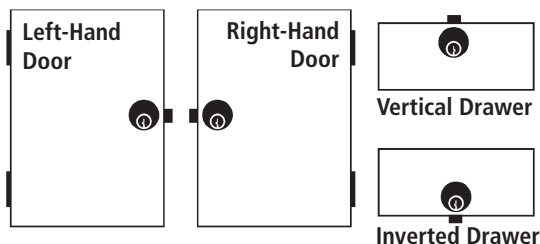


US26D finish



US4 finish

### HANDING CHART



**OLYMPUS**  
**LOCK, INC.**  
*The cabinet lock innovators.*

# 996 | 997

## R Series: Door & Drawer Latch Lock — 4-way Reversible

### OPTIONAL ACCESSORIES

#### Internal plastic spacers

- WP24 3/32" thick plastic spacers

#### Strikes

- 12-1, 12-2, 12-3, 12-4, 075

#### Trim Ring

- TR1256 trim ring



#### Through-bolt plate

External metal 1/8" or through-bolt plate allows for an attractive flush mounting of the cabinet lock face. Available in US3 or US26D finish.

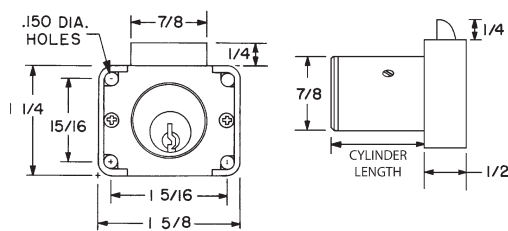
- ETS6 through-bolt plate, 1/8" thick



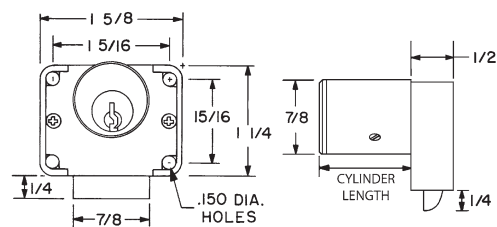
U.S. Patent No. D490,686

### DIMENSIONS

#### 996 Drawer Lock

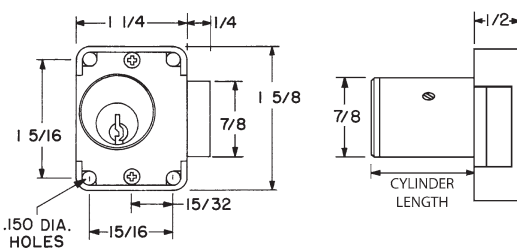


996V VERTICAL HAND

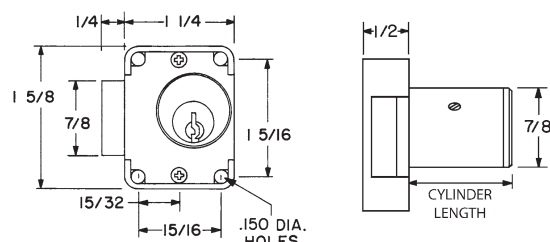


996I INVERTED HAND

#### 997 Cabinet Door Lock



997L LEFT HAND



997R RIGHT HAND