

998 | 999

N Series: Door & Drawer Latch Lock — 4-way Reversible

*Easily field reversible
between door and
drawer function*

SPECIFICATIONS

Function: Spring latch

Keying: Can be keyed together with other N Series locks

Reversible: Easily reversible between door and drawer function

Rekeyable: Easily rekeyable via set screw cylinder release mechanism

US Patent Nos: 4,899,563; 7,874,189 B2

Body: Zinc die cast

Cylinder: Solid brass, pin tumbler

Barrel length: 15/16" or 1-3/8"

Barrel diameter: 7/8"

Latch projection: 1/4"

Finish: 26D or US4

Packaged: Packed 10 per box

KEYING INFORMATION

Keyway: N Series (equivalent to National D4291 4-pin or D4292 5-pin system)

Keys: Includes 2 keys per lock

Stock keying: KD/KA - 4 pin standard

Stock KA#: 101, 103, 107, 915

Masterkeyed: 5 pin standard

Grand masterkeyed: Available

Keyblank 4-pin: KBN-4-NP

(equivalent to NA14, 1069L)

Keyblank 5-pin: KBN-5-NP

(equivalent to NA12, 1069LA)

INCLUDED ACCESSORIES

Strike: 999-STRIKE (slotted lip strike)

OPTIONAL ACCESSORIES

Spacer: WP24 (1/8" thick)

Trim ring: TR1256

Through-bolt hardware: ETS6 trim plate

998

Function: Drawer lock

Handing: Available in the vertical or inverted position

VERTICAL DRAWER



US26D finish



US4 finish

INVERTED DRAWER



US26D finish



US4 finish

999

Function: Cabinet door lock

Handing: Available in the left-hand or right-hand position

LEFT-HAND DOOR



US26D finish



US4 finish

RIGHT-HAND DOOR

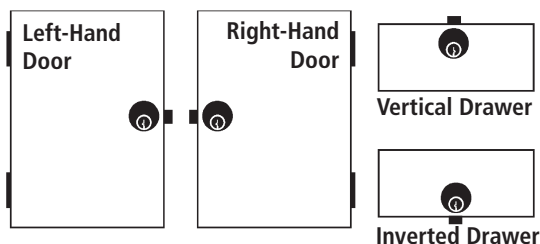


US26D finish



US4 finish

HANDING CHART



998 | 999

N Series: Door & Drawer Latch Lock — 4-way Reversible

OPTIONAL ACCESSORIES

Internal plastic spacers

- WP24 3/32" thick plastic spacers

Strikes

- 12-1, 12-2, 12-3, 12-4, 075

Trim Ring

- TR1256 trim ring



Through-bolt plate

External metal 1/8" or through-bolt plate allows for an attractive flush mounting of the cabinet lock face. Available in US3 or US26D finish.

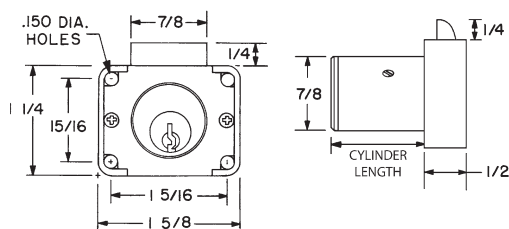
- ETS6 through-bolt plate, 1/8" thick



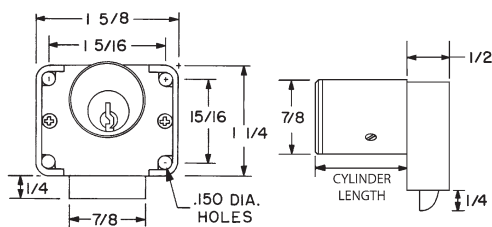
U.S. Patent No. D490,686

DIMENSIONS

998 Drawer Lock

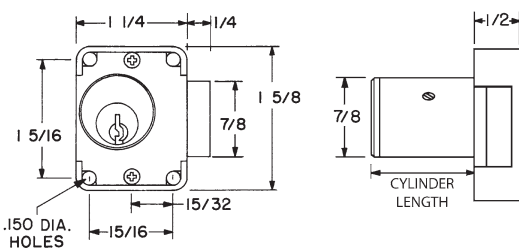


998V VERTICAL HAND

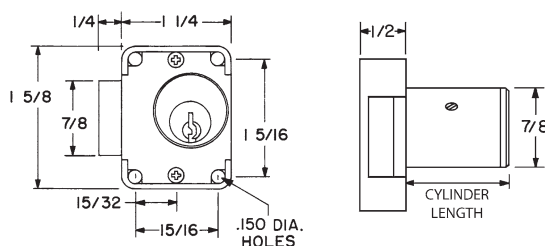


998I INVERTED HAND

999 Cabinet Door Lock



998L LEFT HAND



998R RIGHT HAND