

# DCP-SP1 / DCP-SP2

### ***Padlock Bumper Plate for use with DCP and DCP500***

## SPECIFICATIONS

**Function:** Protects face of cabinet from padlock and keys

**Works with:** Olympus DCP and DCP500  
padlockable cam locks

**Handing:** Available for right-hand or left-hand cabinet doors (LH version coming June 2018)

**Size:** 3.937" wide x 2.913" high

**Thickness: .0456"**

**Finish:** Polished stainless steel (US32) or satin chrome (US26D)

## INCLUDES

Adhesive sheet to protect finish and two screws for mounting



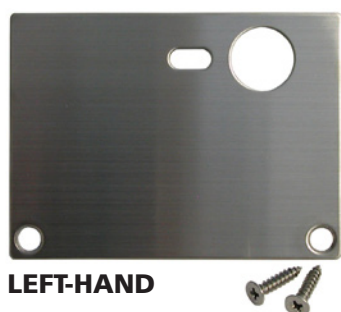
**DCP-SP1** right-hand  
plate shown

**DCP-SP2 left-hand plates coming June 2018**

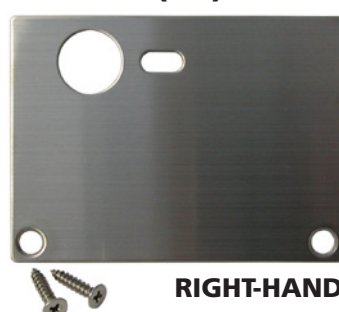
### DCP-SP1 (RH) / DCP-SP2 (LH) BUMPER PLATES

Available in US32 (polished stainless steel) or US26D (satin chrome).  
For use on right-hand (DCP-SP1) or left-hand (DCP-SP2) cabinet  
doors. Bumper plates and padlockable cam locks sold separately.

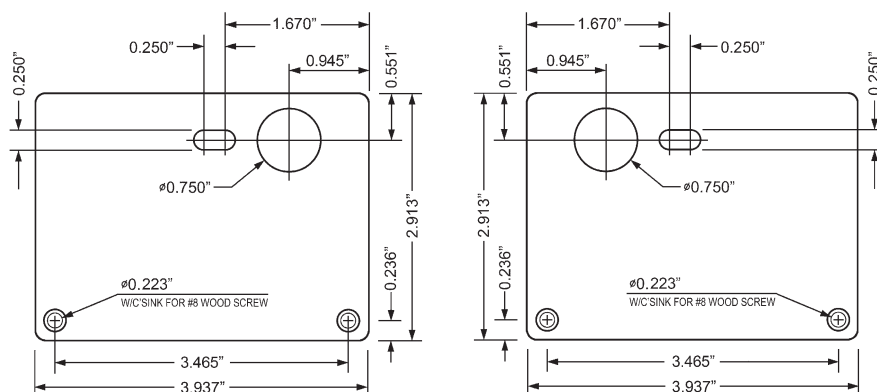
## DCP-SP2 (LH)



## DCP-SP1 (RH)

**FOR USE WITH:**

**DCP or DCP500**  
Padlockable cam locks



## CABINET DOORS

