

# L78 SERIES

## S Series: Schlage C Keyway Latch Lock

*Easily field reversible between door and drawer functions.*

### SPECIFICATIONS

**Reversible:** Easily field reversible between door and drawer functions

**Rekeyable:** Easily rekeyable via set screw cylinder release mechanism

**US Patent Nos:** 4,899,563; 7,874,189 B2

**Body:** Zinc die cast

**Cylinder length:** 1-1/8" or 1-3/8"

**Barrel diameter:** 1-1/8"

**Finish:** 26D or US3

**Packaged:** Packed 10 per box

### INCLUDED ACCESSORIES

**For 1-1/8" barrel length locks:**

10-351 plastic spacers (qty 2)

L78ST-1 lipped strike

**For 1-3/8" barrel length locks:**

L78ST-2 lipped strike

### L78 KEYING INFORMATION

**Keying:** Can be keyed together with other Schlage C Keyway locks

**Keyway:** Schlage C keyway

**Keys:** Includes 2 keys per lock

**Cylinder:** Solid brass, pin tumbler

**Stock keying:** KD/KA - 5 pin standard

**Stock KA#:** 101, 102

**Masterkeying:** 5 pin standard, 6-pin available

**Grand masterkeying:** Available

**Keyblank 5-pin:** KBSC-5

**Keyblank 6-pin:** KBSC-6

### OPTIONAL ACCESSORIES

**Trim collar:** TR78 trim ring

**Spacer:** 10-351 spacer (1/8" thick)

**Cylinder:** 78-201 Series

### L78

**Function:** Latch lock

US26D Finish  
\*US3 finish also available



L78I (inverted)



L78V (vertical)

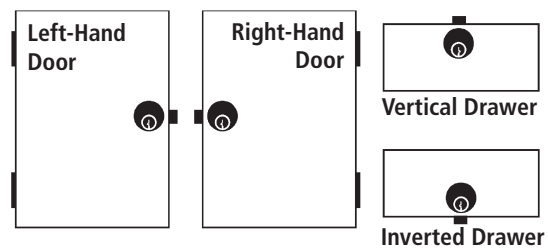


L78L (inverted)



L78R (right-hand)

### HANDING CHART



### INCLUDED ACCESSORIES



**10-351 internal spacers**  
For a flush fit on varying material thicknesses



**L78ST Matching lip strike**

**OLYMPUS LOCK, INC.**  
*The cabinet lock innovators.*

# L78 SERIES

## S Series: Schlage C Keyway Latch Lock

*Easily field reversible  
between door and  
drawer functions.*

**OPTIONAL ACCESSORIES** - See our website for a complete list of optional components.

### Internal Plastic Spacers

- 10-350 1/8" thick plastic spacers
- 10-348 1/4" thick plastic spacers
- 10-349 1/2" thick plastic spacers

### Strikes

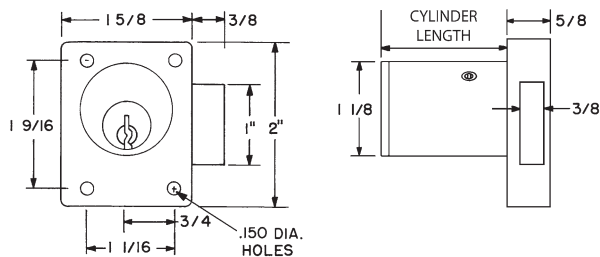
- Metal strikes: L78ST-2

### Trim Ring

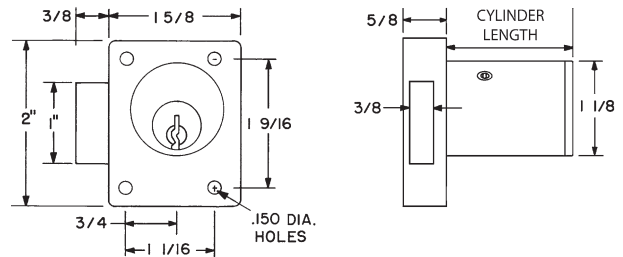
- TR78 trim ring

## DIMENSIONS

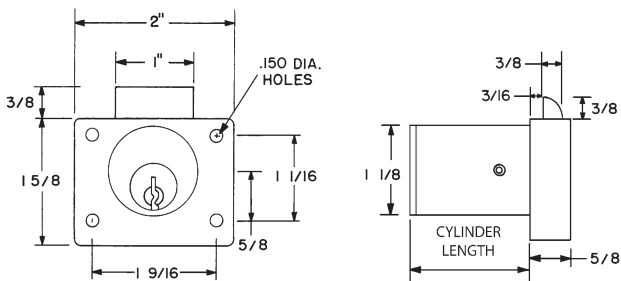
### L78L - Left Hand (LH)



### L78R - Right Hand (RH)



### L78V - Vertical Hand (VH)



### L78I - Inverted Hand (RH)

