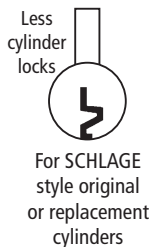


# L78 LC SERIES

## S Series: Latch Lock - Less Cylinder



*Easily field reversible between door and drawer functions.*

### SPECIFICATIONS

**Reversible:** Easily field reversible between door and drawer functions

**Rekeyable:** Easily rekeyable via set screw cylinder release mechanism

**US Patent Nos:** 4,899,563; 7,874,189 B2

**Body:** Zinc die cast

**Cylinder length:** 1-1/8" or 1-3/8"

**Barrel diameter:** 1-1/8"

**Finish:** 26D or US3

**Packaged:** Packed 10 per box

### INCLUDED ACCESSORIES

**For 1-1/8" barrel length locks:**

10-351 plastic spacers (qty 2)

L78ST-1 lipped strike

**For 1-3/8" barrel length locks:**

L78ST-2 lipped strike

### L78-LC CYLINDER INFORMATION

**Cylinder:** Not included

**Accepts:** Schlage compatible key-in-knob cylinders including ILCO cylinder #1599

**Includes:** All parts necessary to work with other manufacturers' cylinders

**Compatible electronic cylinders:** Medeco LOGIC, ASSA CLIQ or VIDEX CyberLock key-in-knob cylinders

### OPTIONAL ACCESSORIES

**Trim collar:** TR78 trim ring

**Spacer:** 10-351 spacer (1/8" thick)

**Cylinder:** 78-201 Series

## L78 LC

**Function:** Latch lock

US26D Finish  
\*US3 finish also available



L78I (inverted)



L78V (vertical)

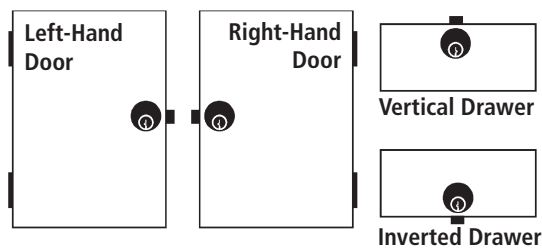


L78L (inverted)



L78R (right-hand)

### HANDING CHART



### INCLUDED ACCESSORIES



**10-351 internal spacers**  
For a flush fit on varying material thicknesses



**L78ST Matching lip strike**

**OLYMPUS LOCK, INC.**  
*The cabinet lock innovators.*

# L78 SERIES

## S Series: Schlage C Keyway Latch Lock

*Easily field reversible between door and drawer functions.*

**OPTIONAL ACCESSORIES** - See our website for a complete list of optional components.

### Internal Plastic Spacers

- 10-351 1/8" thick plastic spacers
- 10-348 1/4" thick plastic spacers
- 10-349 1/2" thick plastic spacers

### Strikes

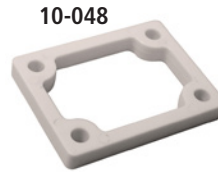
- Metal strikes: L78ST-2

### Trim Ring

- TR78 trim ring



10-351



10-048



10-049



TR78

### 78-201 Series

Schlage C keyway cylinders



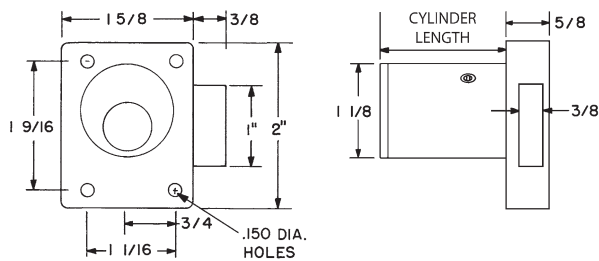
L78ST lip strike



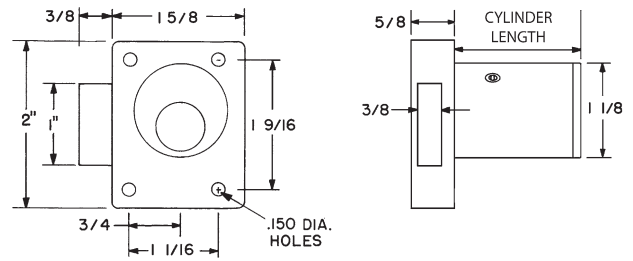
SCHLAGE style C keyway replacement cylinder

## DIMENSIONS

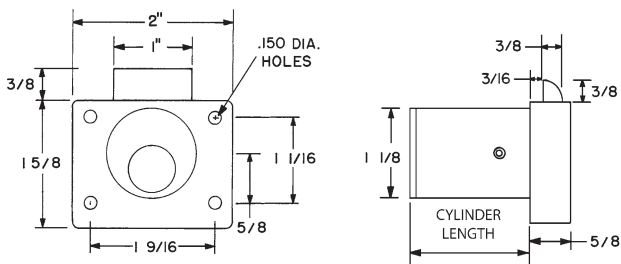
### L78L - Left Hand (LH)



### L78R - Right Hand (RH)



### L78V - Vertical Hand (VH)



### L78I - Inverted Hand (RH)

