

R078 SERIES

R Series: Deadbolt Door & Drawer Cabinet/Furniture Locks

SPECIFICATIONS

Keying: Can be keyed together with other R Series locks

Rekeyable: Easily rekeyable via set screw cylinder release mechanism

US Patent Nos: 4,899,563; 4,920,774

Body: Zinc die cast

Cylinder: Solid brass, pin tumbler

Cylinder length: 1-1/8"

Barrel diameter: 7/8"

Finish: 26D or US4

Packaged: Packed 10 per box

KEYING INFORMATION

Keyway: R Series (equivalent to CCL R1 system)

Keys: Includes 2 keys per lock

Stock keying: KD/KA - 5 pin standard

Stock KA#: 4T21579, 4T37526

Masterkeyed: 5 pin standard

Grand masterkeyed: Available

Keyblank 5-pin: KBR-5-NP
(equivalent to CO106, 1003A)

OPTIONAL ACCESSORIES

Spacers: WP21 (3/32" thick), WP22 (1/4" thick), WP23 (1/2" thick)

Strikes: 07S, 56-1, 12-1, 12-2, 12-3, 12-4 strikes

Trim collar: TR1256

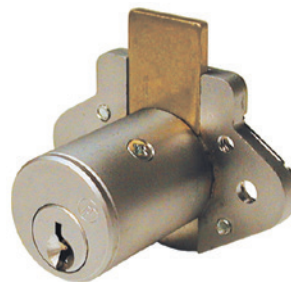
Optional bolt: 078-LB1-DW optional 1/2" outbent drawer bolt

Through-bolt hardware: ETS3 trim plate and ETST3 template

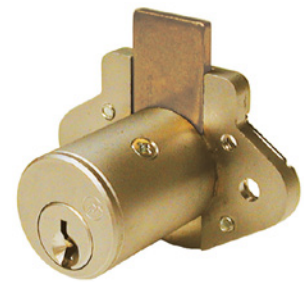
R078

Function: Drawer lock

Extended offset bolt: Specify -LB option at time of order.



US26D finish



US4 finish

R078 SERIES

R Series: Deadbolt Door & Drawer Cabinet/Furniture Locks

OPTIONAL ACCESSORIES - See our website for a complete list of optional components.

Internal plastic spacers

- WP21 3/32" thick plastic spacers
- WP22 1/4" thick plastic spacers
- WP23 1/2" thick plastic spacers

Strikes

- 12-1, 12-2, 12-3, 12-4, 075

Trim Ring

- TR1256 trim ring

Extended bolt

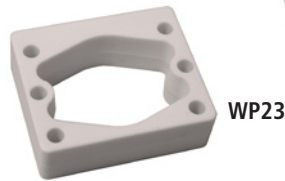
- 15-1-35 (see below for installed dimensions)



WP21



WP22



WP23



TR1256

Through-bolt plate

External metal 1/8" through-bolt plate allows for an attractive flush mounting of the cabinet lock face. Available in US3 or US26D finish.

- ETS3 through-bolt plate, 1/8" thick



ETS3

Through-bolt plate template

Allows for proper mounting hole placement of through-bolt plate. Can be used as a 1/8" shim spacer. Available in US3 and US26D finish.

- ETST3 through-bolt plate template

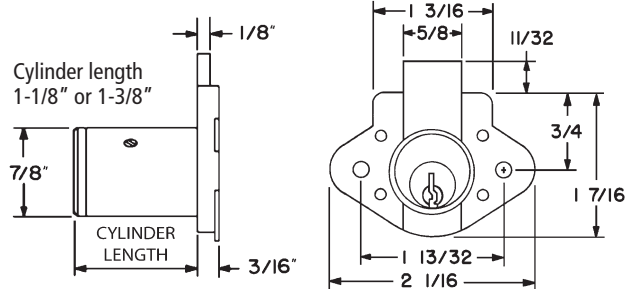


ETST3

U.S. Patent No. D490,686

DIMENSIONS

R078 Drawer Lock



Extended bolt option for drawer lock

