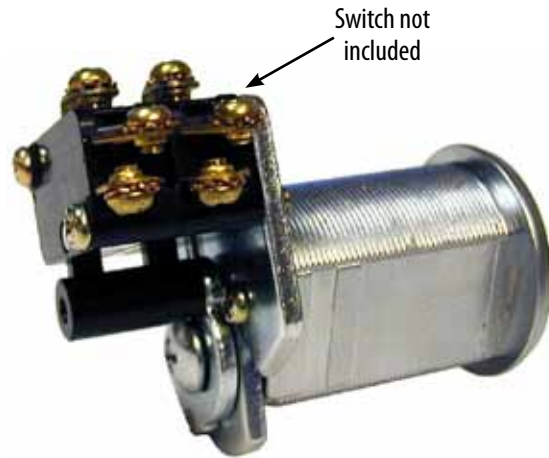


Product Data Sheet

SW-1

Switch Accessory Pack (switch not included)
For 720, 820, 920, CR25 or SA54 Series Cam Locks



General Features:

- Includes parts to convert Olympus Lock 720, 820 or 920 Series cam locks into switch locks.
- Accepts pin plunger style, snap acting, miniature switches.
- Switch manufacturers: Omron, Honeywell, Cherry, Panasonic or C & K.
- See the reverse side for a complete list of available switches for use with the SW-1.

The SW-1 may be used with the following Olympus products:



720LM/DM
Small Format
IC Core



820SC/820LC
Schlage C Keyway or
Less Cylinder



920LM/DM
Schlage Full-Size IC Core



CR25LM/DM
Corbin/Russwin IC Core



SA54LM/DM
Corbin/Russwin IC Core

SW-1

Switch Accessory Pack (switch not included)
For 720, 820 or 920 Series Cam Locks

OLYMPUS
LOCK, INC.

SW-1 Accessory Pack

- Includes parts to convert 720, 820, or 920 Series cam locks into switch locks
- Switch not included
- Accepts pin plunger style, snap acting, miniature switches
- Allows stacking of up to 2 switches

SW-1 Accessory Pack



Manufacturers

- Omron - V Series
- Honeywell (MicroSwitch) - V Series
- Cherry - E Series
- Panasonic (Aromat) - ABV Type
- C&K (ITT) - TM & TF Series

Common Suppliers

- Newark Electronics 800-463-9275
- Allied Electronics 866-433-5722
- McMaster-Carr 562-463-4277



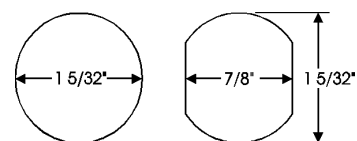
Switch not included.



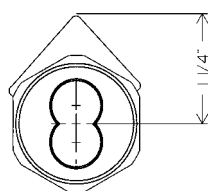
TR201, TR202, TR203

Trim Collars
Available separately

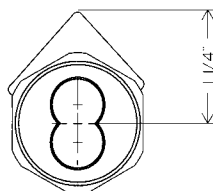
Mounting cutout:



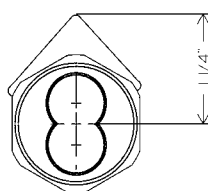
Cam Lock Dimensions



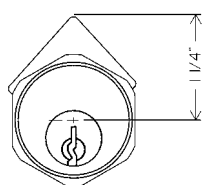
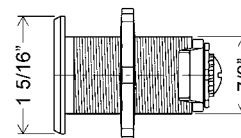
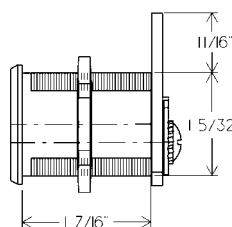
720 Series



920 Series



CR25 & SA54 Series



820SC / 820LC Series

