



## Bathtub - Tara.

Two-hole tub mixer for freestanding installation with hand shower set - polished chrome

Article number: 25 943 892-00



- 8-5/8" Projection
- Swiveling spout 180°
- Hand shower: Standard spray
- Spout: Round aerated stream
- Hand shower with descaling system
- Tub / shower diverter
- Total height 36-1/4"
- Riser height 24-3/4"
- Height to aerator/spout outlet 30-1/8"
- Flanges Ø 3-1/2"
- Center to center 5-7/8"
- Metal shower hose 49-1/4" with anti-twist device
- Hand shower to be mounted on right pillar
- Water flow rate limited to max. 5.8 gpm
- Hand shower water flow rate limited to max. 1.8 gpm
- NOTE: Local building codes may require the use of an anti-scald device. Please refer to remote pressure balance valve (35 910 970 90)
- Accessories available for mounting on left riser (or exchange shower bracket for wall bracket)
- Internal backflow preventer.



polished chrome

Accessory is required for this item.

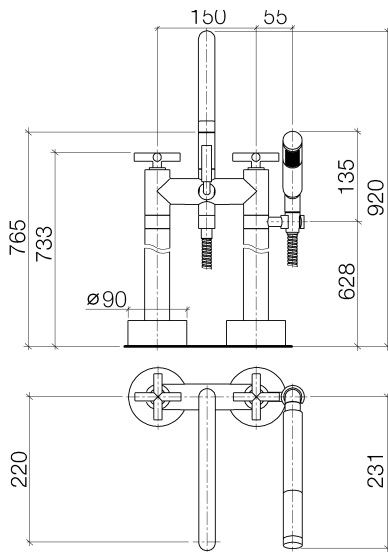


## Bathtub - Tara.

Two-hole tub mixer for freestanding installation with hand shower set - polished chrome

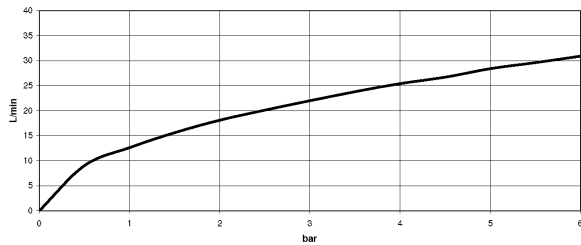
Article number: 25 943 892-00

### Dimensional drawing



All dimensions in mm / inch = mm x 0,0394

### Flow rate chart





**Bathtub - Tara.**

Two-hole tub mixer for freestanding installation with hand shower set - polished chrome

Article number: 25 943 892-00

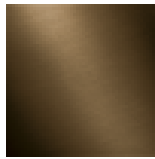
**Other surface finishes**



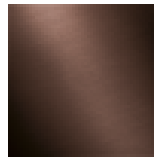
platinum matte  
25 943 892-06



platinum  
25 943 892-08



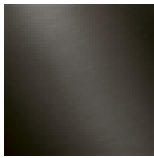
Dark Brass matte  
25 943 892-16



Dark Bronze matte  
25 943 892-17



black matte  
25 943 892-33



Dark Platinum matte  
25 943 892-99

More custom finish options are available via special production (xTra Service). Please see our finish matrix for availability and pricing or contact a Dornbracht representative.

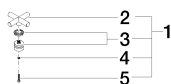
**Required article**



35 944 970-90 0010  
Floor mounting rough set -

**Spare parts list**

Number	Item Number	Designation	Number of units
1	04 20 89 010 00-00	Handle - polished chrome	2

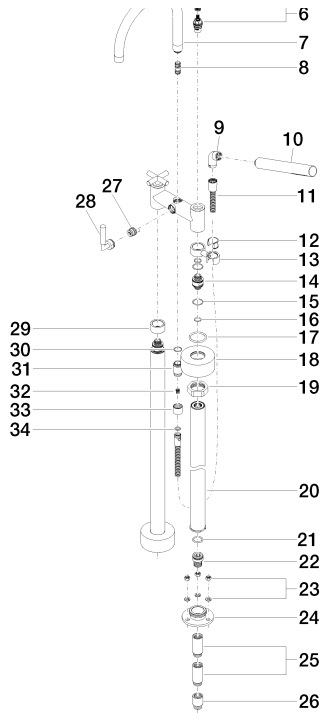




Bathtub - Tara.

Two-hole tub mixer for freestanding installation with hand shower set - polished chrome

Article number: 25 943 892-00



2	09 20 89 010-00	Handle - polished chrome	2
3	90 12 12 007 00-00	Handle - polished chrome	2
4	09 30 11 029 90	Wall connection -	2
5	09 30 30 075 90	Mounting bracket -	2
6	90 90 03 131 00 90	Ceramic cartridge clockwise-closing -	2
7	90 28 22 222 00-00	Outlet - polished chrome	1
8	90 21 10 011 00 90	Conversion -	1
9	04 24 04 189 00-00	Arc - polished chrome	1
10	28 013 979-00	Baton hand shower - polished chrome	1
11	09 30 02 072-00	Metal shower hose 1/2" x 3/8" x 49-1/4" - polished chrome	1
12	09 18 40 035 90	Hood / sleeve -	1
13	04 28 10 029 01-00	Holder - polished chrome	1
14	09 29 05 021 20 90	Wall connection -	1
15	09 14 10 112 90	Washer -	1
16	09 14 10 055 90	Washer -	2
17	09 14 10 041 90	Washer -	4
18	09 27 89 025-00	Escutcheon - polished chrome	4
19	09 23 30 040-07	Mounting bracket - Rough nickel-plated	2
20	04 28 22 009 20-00	Wall connection - polished chrome	2
21	09 14 10 081 90	Washer -	2
22	09 24 03 094-07	Wall connection - Rough nickel-plated	2
23	04 23 10 023 00 90	Mounting bracket -	2
24	09 30 11 130-07	Mounting bracket - Rough nickel-plated	2
25	09 24 03 081 10 90	Extension -	3
26	09 24 03 080 90	Extension -	2
27	90 15 01 005 00 90	Conversion -	4
28	90 18 20 025 00-00	Conversion - polished chrome	2
29	09 28 10 028-00	Escutcheon - polished chrome	1
30	09 14 10 032 90	Washer -	1
31	09 24 03 121-00	Nipple - polished chrome	1
32	09 23 01 131 90	Application -	1
33	09 21 02 143-00	Hood / sleeve - polished chrome	1
34	09 14 20 026 90	Washer -	1