



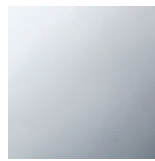
Sink - Tara.

Soap dispenser wall-mounted - polished chrome

Article number: 83 435 892-00

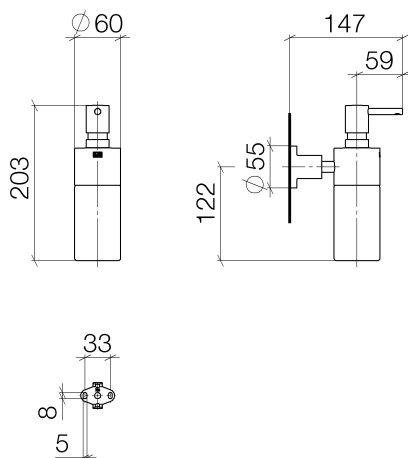


- Frosted glass bottle
- Width 2-3/8"
- Height 7-7/8"
- Flange diameter 2-1/8"
- 8.45 oz bottle capacity
- 5-5/8" Projection



polished chrome

Dimensional drawing



All dimensions in mm / inch = mm x 0,0394



Sink - Tara.

Soap dispenser wall-mounted - polished chrome

Article number: 83 435 892-00



Sink - Tara.

Soap dispenser wall-mounted - polished chrome

Article number: 83 435 892-00

Other surface finishes



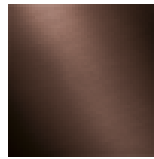
platinum matte
83 435 892-06



platinum
83 435 892-08



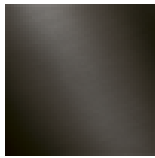
Dark Brass matte
83 435 892-16



Dark Bronze matte
83 435 892-17



black matte
83 435 892-33



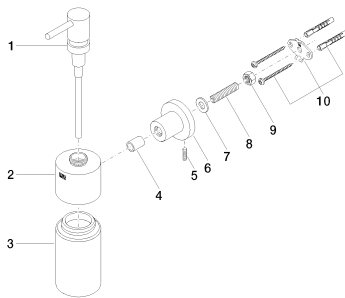
Dark Platinum matte
83 435 892-99

More custom finish options are available via special production (xTra Service). Please see our finish matrix for availability and pricing or contact a Dornbracht representative.

Sink - Tara.

Soap dispenser wall-mounted - polished chrome

Article number: 83 435 892-00



Spare parts list

Number	Item Number	Designation	Number of units
1	05 10 10 535 00-00	Wall connection - polished chrome	1
2	90 10 10 529 00-00	Soap dispenser - polished chrome	1
3	08 90 04 001 82	Bottle -	1
4	08 17 20 624-00	Hood / sleeve - polished chrome	1
5	04 31 11 113 00 90	Mounting bracket -	1
6	08 17 89 505-00	Holder - polished chrome	1
7	09 30 11 046 90	Washer -	1
8	08 18 50 586 90	Pipe -	1
9	09 23 10 026 90	Mounting bracket -	1
10	05 17 20 739 00 90	Mounting bracket -	1