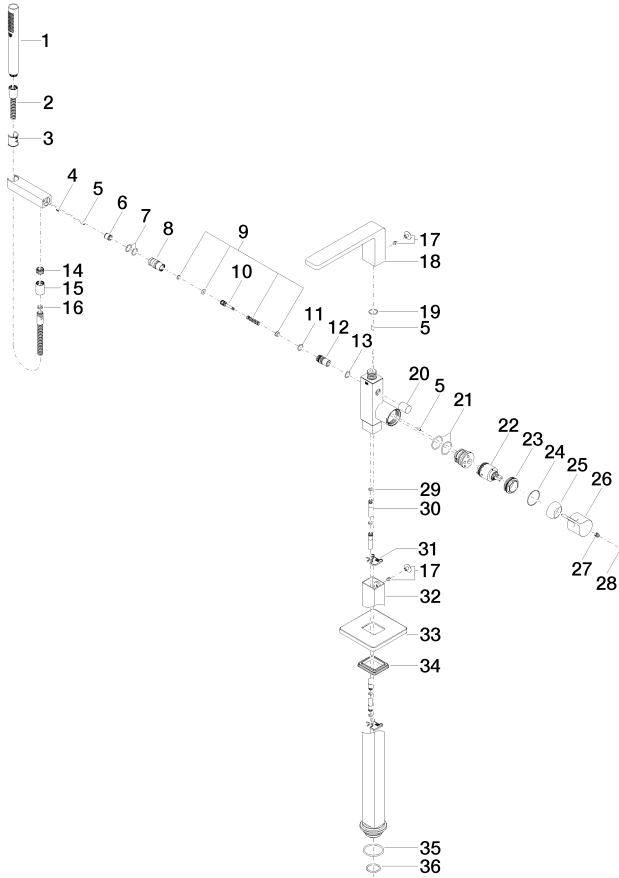


Bathtub - LULU

Single-lever tub mixer for freestanding installation with hand shower set - polished chrome

Article number: 25 863 710-00

Spare parts list



Number	Item Number	Designation	Number of units
1	28 013 979-00 0010	Baton hand shower - polished chrome	1
2	09 30 02 072-00	Metal shower hose 1/2" x 3/8" x 49-1/4" - polished chrome	1
3	09 18 40 118 90	Hood / sleeve -	1
4	09 31 11 058 90	Mounting bracket -	1
5	09 31 11 040 90	Mounting bracket -	3
6	09 23 01 141 90	Back-flow preventer -	1
7	09 14 10 010 90	O-Ring EPDM 70 17,0 x 2,0 mm -	2
8	09 24 03 130-00	Nipple - polished chrome	1
9	90 16 02 023 00 90	Conversion -	1
10	09 31 09 094 20-00	Pivot rod/lift knob - polished chrome	1
11	09 14 10 055 90	O-Ring EPDM 70 15,0 x 2,0 mm -	1
12	09 21 34 080-00	Conversion - polished chrome	1
13	09 14 10 033 90	O-Ring EPDM 70 14,5 x 2,0 mm -	1
14	09 24 03 069 90	Nipple -	1
15	09 21 02 069-00	Hood / sleeve - polished chrome	1
16	09 14 20 026 90	Washer Centellen WS 3820 14 x 8 x 2 mm Centellen WS 3820 -	1
17	04 31 20 034 00 90	Plug for European drain -	2
18	90 11 71 043 00-00	Outlet - polished chrome	1
19	09 14 10 031 90	O-Ring 20,0 x 2,0 mm -	1
20	09 20 71 031-00	Drain - polished chrome	1
21	09 14 10 148 90	O-Ring 32 x 2,5 mm -	2
22	90 15 05 039 00 90	cartridge -	1
23	09 24 04 298 90	Mounting bracket -	1
24	09 14 10 037 90	O-Ring 42,0 x 1,5 . mm -	1
25	09 28 30 036-00	Hood / sleeve - polished chrome	1
26	09 20 80 022-00	Lever - polished chrome	1
27	09 31 11 030 90	Mounting bracket -	1
28	90 31 20 087 00-00	Cover - polished chrome	1
29	09 14 10 139 90	O-Ring EPDM 70 9,0 x 2,0 mm -	2
30	04 28 22 025 00 90	Wall connection -	2
31	09 20 93 051 90	Mounting bracket -	2
32	04 28 22 024 00-00	Pipe - polished chrome	1
33	09 27 71 011-00	Escutcheon - polished chrome	1
34	09 14 03 107 90	Washer -	1
35	09 14 10 084 90	O-Ring EPDM 70 48 x 3,5 mm -	1
36	09 14 10 018 90	O-Ring EPDM 70 32,0 x 3,0 mm -	1



Bathtub - LULU

Single-lever tub mixer for freestanding installation with hand shower set - polished chrome

Article number: 25 863 710-00