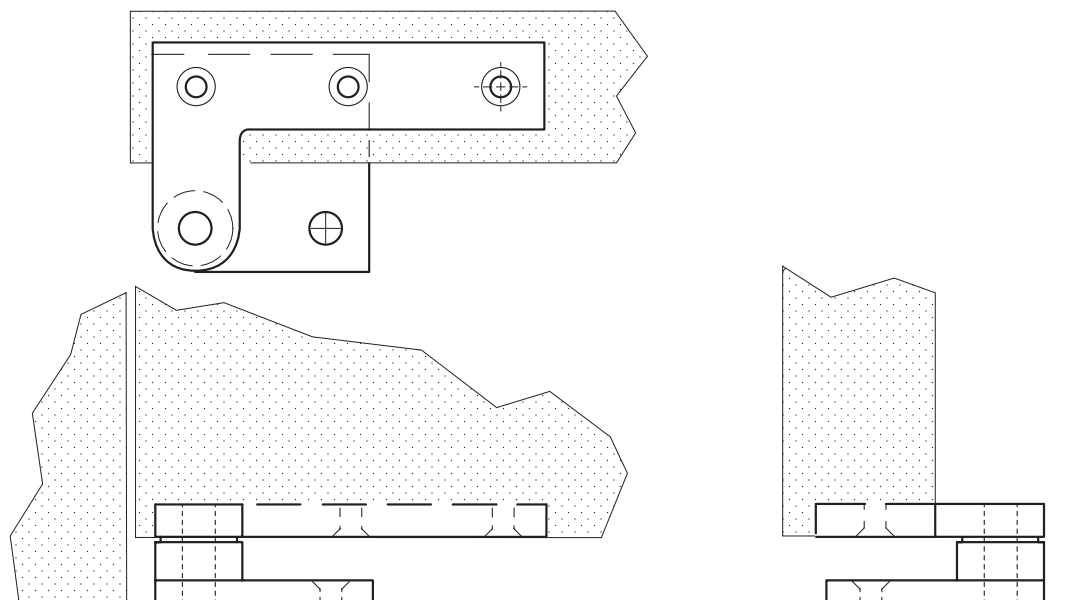


Architectural Door Accessories

ASSA ABLOY

The global leader in
door opening solutions

Rockwood CP40 - Standard Floor Pivot Standard Duty $\frac{3}{8}$ " Thick for Wood Doors Engineered to be Used in Conjunction with Offset Head Pivot



Available Finishes:

- US3/605
- US4/606
- US10/612
- US10B/613
- US10BE/613E
- US26/625
- US26D/626

WEIGHT:
1.3 lbs.

MATERIAL SIZE:
 $\frac{3}{8}$ " thick for doors
up to 200 lbs., and
maximum 42" wide.

Specifications:

MATERIAL:

Solid Brass Leaf, Stainless Steel Pin

FASTENERS:

6 ea. #12 x 1 $\frac{1}{4}$ " Flat Head Wood Screws

FEATURES:

- Mostly concealed when installed
- Includes plastic washer for smooth silent operation
- Handing is field selectable
- Standard Duty is made from $\frac{3}{8}$ " thick brass

Where applicable please use NFPA 80 6.4 guidelines in determining the number and locations of pivots.

ORDERING:

Specify door thickness and floor clearing

****Modifying construction or components of Custom Pivot Assembly can impact performance and will void manufacturer's warranty and liability.**

300 Main Street
Rockwood, Pennsylvania 15557
P: 800.458.2424 • F: 800.922.9212
www.assaabloydooraccessories.us • orders.rockwood@assaabloy.com

Copyright © 2018, ASSA ABLOY Accessories and Door Controls Group, Inc. All rights reserved. Reproduction in whole or in part without the express written permission of ASSA ABLOY Accessories and Door Controls Group, Inc. is prohibited.