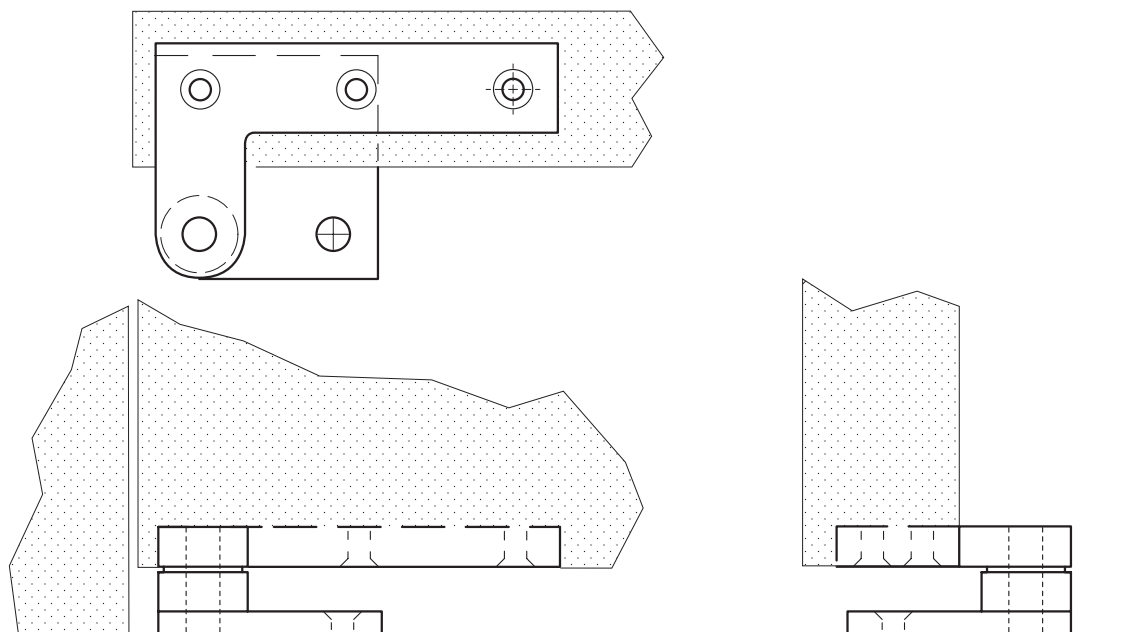


Rockwood CP40HD - Standard Floor Pivot Heavy Duty $\frac{1}{2}$ " Thick for Wood Doors Engineered to be Used in Conjunction with Offset Head Pivot



Available Finishes:

- US3/605
- US4/606
- US10/612
- US10B/613
- US10BE/613E
- US26/625
- US26D/626

WEIGHT:
1.9 lbs.

MATERIAL SIZE:
 $\frac{1}{2}$ " thick for doors
up to 300 lbs., and
maximum 48" wide.

Specifications:

MATERIAL:

Solid Brass Leaf, Stainless Steel Pin

FASTENERS:

6 ea. #12 x $1\frac{1}{4}$ " Flat Head Wood Screws

FEATURES:

- Mostly concealed when installed
- Includes plastic washer for smooth silent operation
- Handing is field selectable
- Heavy Duty (HD) is made from $\frac{1}{2}$ " thick brass

Where applicable please use NFPA 80 6.4 guidelines in determining the number and locations of pivots.

ORDERING:

Specify door thickness and floor clearing

****Modifying construction or components of Custom Pivot Assembly can impact performance and will void manufacturer's warranty and liability.**