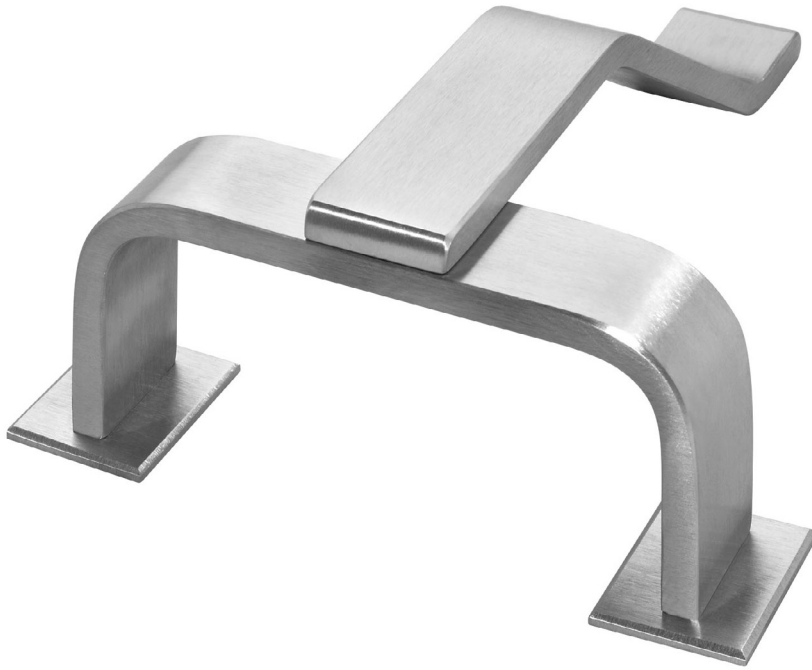


Rockwood R116EDPL - Exit Device Protector



Available Finishes:

- US3/605
- US10/612
- US10B/613
- US10BE/613E
- US32D/630
- US32DMS

MATERIAL SIZE:

$\frac{3}{8}$ " x 2"

WEIGHT:

3.5 lbs.

CTC:

7 $\frac{1}{2}$ "

PROJECTION:

3 $\frac{1}{4}$ "

Specifications:

MATERIAL:

Stainless Steel

FASTENERS:

2 ea. $\frac{1}{4}$ " -20 x 2 $\frac{1}{4}$ " Thru Bolts, 1 ea. $\frac{1}{4}$ "-20 x 2" Thru Bolt, Finish Washers (standard 1 $\frac{3}{4}$ " door)

FEATURES:

Suitable for use with exit devices that project less than 2 $\frac{3}{8}$ " from door face; (i.e., Sargent® 80 series, Monarch® 17 series, and Precision® Apex series)

OTHER:

Patent No. 5,867,941

SARGENT 80 series is a registered trademark of Sargent Manufacturing Company.

Monarch 17 series is a registered trademark of Ingersoll-Rand Company.

Precision Apex series is a registered trademark of Apex Machine Tool Company.

300 Main Street

Rockwood, Pennsylvania 15557

P: 800.458.2424 • F: 800.922.9212

www.rockwoodmfg.com • orders.rockwood@assaabloy.com

Copyright © 2017, Rockwood Manufacturing Company, an ASSA ABLOY Group company. All rights reserved. Reproduction in whole or in part without the express written permission of Rockwood Manufacturing Company is prohibited.