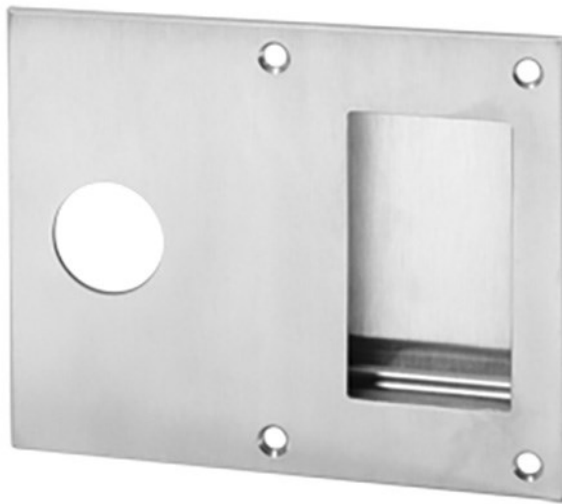


## Rockwood 94DLL - Dead Lock Flush Pulls



### Specifications:

#### MATERIAL:

.125" Brass, Bronze, Stainless Steel

#### FASTENERS:

#8 x 3/4" Oval Head Sheet Metal Screws

#### FEATURES:

- Used with dead bolt lock. 1 1/4" cylinder hole is standard
- Vandal resistant
- Use where projecting trim is an operational problem or an aesthetic objection
- Ideal for use on "exit only" doors where occasional entrance is required (warehouse exits), night latch function exit device openings (classroom exit only doors), mechanical closet doors and anywhere dead locking is approved

#### OPTIONS:

- TORX – security Torx screws
- Custom sizes

### Available Finishes:

- US3/605
- US4/606
- US10/612
- US10B/613E
- US10BE/613E
- US26/625
- US26D/626
- US32D/630
- US32/629
- US32DMS
- US32D316
- US32316

#### SIZE:

6 1/8" x 8"

#### GRIP OPENING:

1 3/4" x 6 1/8"

#### DEPTH:

7/8"

#### WEIGHT:

1.0 lbs.

ANSI A156.6:J403