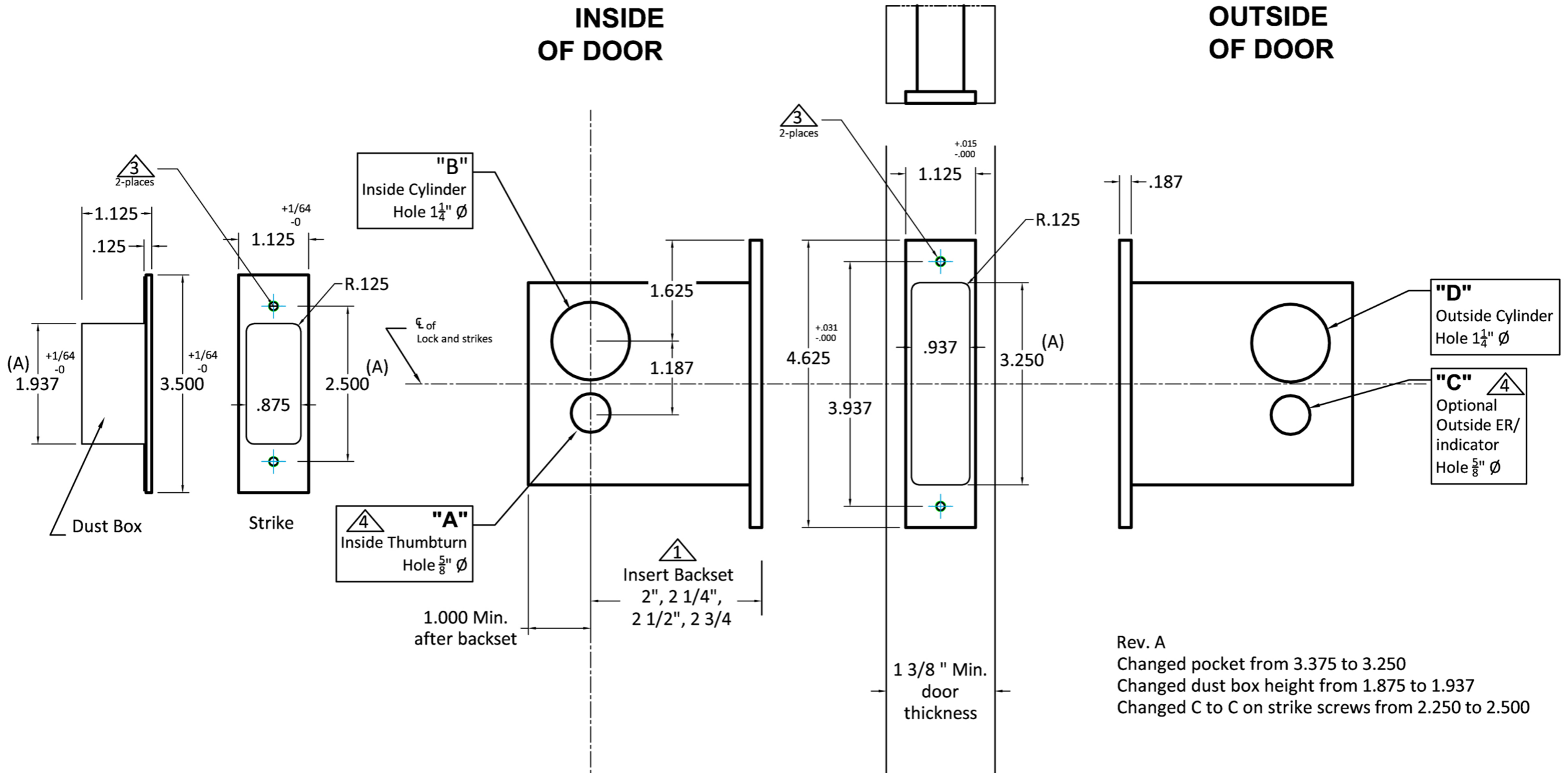


INSIDE OF DOOR

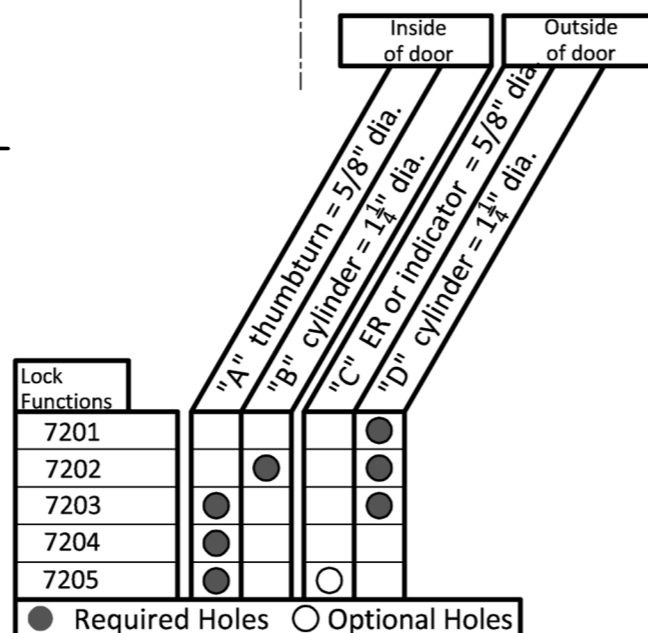
OUTSIDE OF DOOR



Rev. A
 Changed pocket from 3.375 to 3.250
 Changed dust box height from 1.875 to 1.937
 Changed C to C on strike screws from 2.250 to 2.500

OMNIA

041/N Mortise Deadlock



Notes:

- ① Insert backset here 2", 2 1/4", 2 1/2", 2 3/4
- ② Centerline of strike and front are the same.
- ③ Prep for #8 wood or 8-32 machine screws.
- ④ Thumbturn and ER holes may vary from different trim manufacturers. Please refer to their templates to confirm these dimensions.

Additional Notes:

- a) **Responsibility:** Door and frame manufacturers are responsible for providing adequate construction or re-inforcement for proper installation of hardware shown.
- b) See catalog / spec sheets for additional lock details