

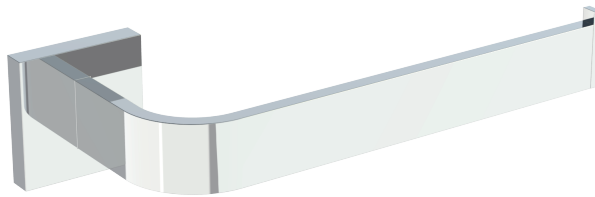
Portland

- Zinc back plate
- Mounting kit included

PRODUCT SPECIFICATION SHEET

PORTLAND SERIES

PDX-TRSQ-PC



FEATURES

- MODERN DESIGN
- CAST BACKINGS
- ZINC+STEEL COMPOSITION
- WALL MOUNTED

FINISHES IN STOCK

- POLISHED CHROME (PC)
- MATTE BLACK (MB)

MATERIAL

- ZINC
- STAINLESS STEEL 304

WARRANTY

- LIFETIME LIMITED (RESIDENTIAL USE)
- ONE YEAR (COMMERCIAL USE)

Product Code	Name	Finishes	Sizes (mm)			Sizes (Inches)		
			Length	Width	Height	Length	Width	Height
PDX-TB12	PDX-12 Towel Bar	PC, MB	352	47	69	13 7/8	1 7/8	2 11/16
PDX-TB18	PDX-18 Towel Bar	PC, MB	504	47	69	19 7/8	1 7/8	2 11/16
PDX-TB24	PDX-24 Towel Bar	PC, MB	657	47	69	25 7/8	1 7/8	2 11/16
PDX-TB30	PDX-30 Towel Bar	PC, MB	809	47	69	31 7/8	1 7/8	2 11/16
PDX-RH-1	PDX-Robe Hook	PC, MB	47	51	39	1 7/8	2	1 9/16
PDX-TPEURO	PDX-Tissue Holder	PC, MB	161	47	69	6 5/16	1 7/8	2 11/16
PDX-TRSQ	PDX-Towel Ring	PC, MB	205	47	69	8 1/16	1 7/8	2 11/16

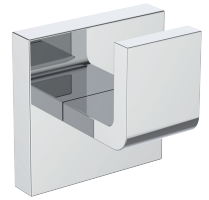
Portland

- Zinc back plate
- Mounting kit included

12"/18"/24"/30" Towel bar
PDX-TB12/TB18/TB24/TB30-PC



Robe Hook
PDX-RH-1-PC



Tissue Holder
PDX-TPEURO-PC



Towel Ring
PDX-TRSQ-PC

